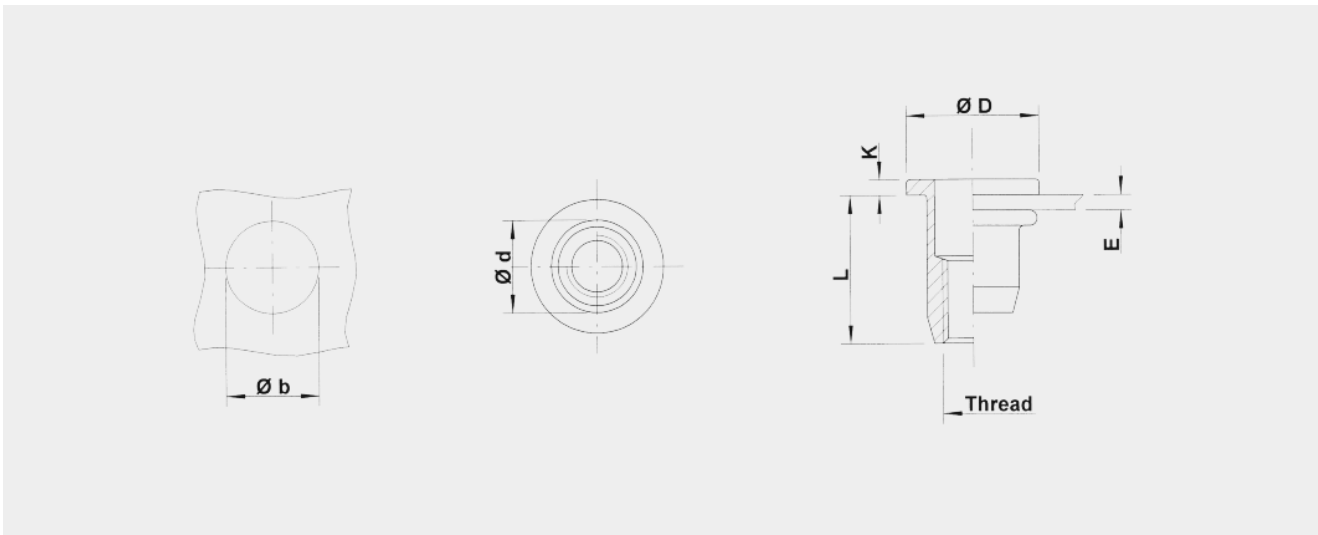


STAINLESS STEEL 316 UPO / SPO



- Stainless Steel 316
- Round shank
- Flat head
- Open
- Extra high corrosion resistance
- **UPO / SPO**

DIMENSIONS



Thread	Type	E = grip	Total length = L + K	L	b ^{+0,1} = drill dia	d = shank dia	D	K	kg/1000	BOX Q	Order Code
M4	UPO20	0,5 - 2,0	12,00	11,00	6,00	6,00	9,0	1,00	1,50	3000	554010
M4	UPO35	2,0 - 3,5	13,50	12,50	6,00	6,00	9,0	1,00	1,60	-	554020*
M5	UPO30	0,5 - 3,0	12,50	11,50	7,00	7,00	10,0	1,00	1,80	2000	555040
M5	UPO50	3,0 - 5,0	16,00	15,00	7,00	7,00	10,0	1,00	2,20	2000	555050
M6	UPO30	0,5 - 3,0	16,00	14,50	9,00	9,00	12,0	1,50	4,10	1000	556020
M6	UPO50	3,0 - 5,0	18,00	16,50	9,00	9,00	12,0	1,50	4,50	1000	556035
M6	UPO70	5,0 - 7,0	20,00	18,50	9,00	9,00	12,0	1,50	4,70	750	556050



Thread	Type	E = grip	Total length = L + K	L	b ^{+0,1} = drill dia	d = shank dia	D	K	kg/1000	BOX Q	Order Code
M8	UPO30	0,5 - 3,0	17,50	16,00	11,00	11,00	15,0	1,50	6,10	500	558010
M8	UPO55	3,0 - 5,5	20,00	18,50	11,00	11,00	15,0	1,50	6,50	500	558020
M8	UPO80	5,5 - 8,0	23,00	21,50	11,00	11,00	15,0	1,50	7,10	500	558035
M10	SPO35	0,8 - 3,5	23,00	21,50	13,00	13,00	17,0	1,50	10,20	250	550600
M10	SPO60	3,5 - 6,0	25,50	24,00	13,00	13,00	17,0	1,50	10,90	350	550605

All dimensions in mm - Technical data subject to modification

*** Non-stock item: minimum order quantity required after depletion of stock**

Tolerances, general and technical characteristics : see materials, coatings, technical data
(contains > 2% Molybden)

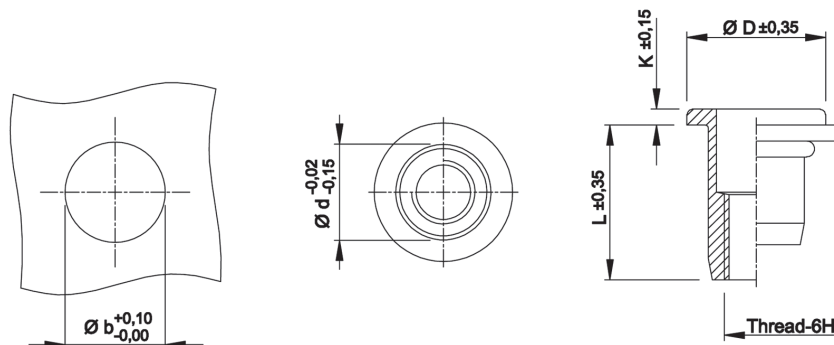


Technical Data

● General tolerances

	Head form	Dimensions in mm	Dimensions in inches
D (head diameter)	Flat head Countersunk head Low profile head	$\pm 0,35$ 0 -0,5 -0,15 +0,3	$\pm .014$ 0 -.020 -.006 +.012
K (head thickness)	Flat head Countersunk head Low profile head	$\pm 0,15$ 0 +0,3 -0,05 +0,3	$\pm .006$ 0 +.012 -.002 +.012
L (length)	General Stainless M10 shank 13 mm	$\pm 0,35$ $\pm 0,5$	$\pm .014$ $\pm .020$
Metric thread= 6H			
Shank size	General (incl. KN) Splined shank (RS) M10 shank 12,4 mm	-0,02 -0,15 $\pm 0,08$ $\pm 0,08$	-.001 -.006 $\pm .003$ $\pm .003$

Example:



● Recommended tightening torque values (Nm)

Max. recommended torque to avoid damaging the threaded connection and ensure optimal screw-nut assembly:

	M3	M4	M5	M6	M8	M10	M12
Aluminium	2,0	2,2	4,5	9,5	17,0	30,0	
Steel	2,5	3,0	5,9	11,0	25,0	49,0	80,0
Stainless Steel	2,5	3,0	5,9	11,0	25,0	49,0	

Recommendations for 8.8 bolts in steel and class A2-70 bolts in stainless steel.

For all technical information see our website:

<http://www.tubtara.com/technical-information>