



Stainless Steel 316

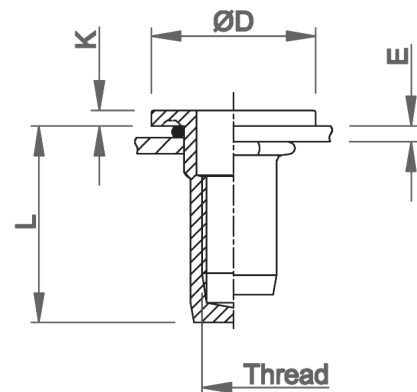
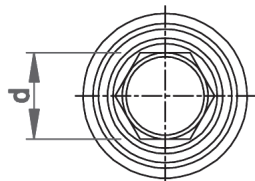
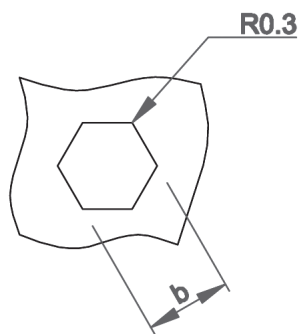
(contains > 2% Molybden)

Semi-hexagonal shank
Flat head with underhead seal
Closed end

HX

watertight
10 bar (IP68¹)

extra high
corrosion resistance



THREAD	TYPE	E = grip	L	b ^{+0,1} = hex hole	d = hex shank	D	K	kg/1000	ORDER CODE	BOX Small	BOX Large
M5	HX3001	0,5-3,0	19,0	7,0	7,0	13,5	1,5	3,8	555 905	(500)	2500
	HX4501	3,0-4,5	20,5					4,0	555 910	-	-
M6	HX3001	0,5-3,0	21,5	9,0	9,0	16,0	1,5	7,5	556 903	(500)	500
	HX4501	2,0-4,5	24,4				1,6	8,3	556 906	-	500
M8	HX3001	0,5-3,0	25,0	11,0	11,0	21,0	2,0	13,1	558 902	-	500
	HX5501	3,0-5,5	27,5					13,6	558 905	-	-

Small box: only for DFS customers, not export - (xxx) handling cost can be charged

Other gripranges and dimensions on demand

All dimensions in mm - Technical data subject to modification

Tolerances and characteristics see chapter 'Technical Information'

¹ IP68 guaranteed under Dejongd test conditions

