

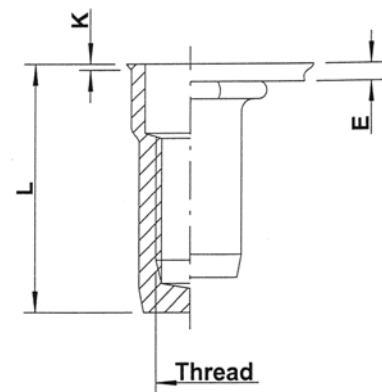
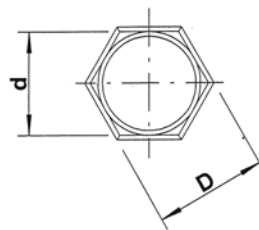
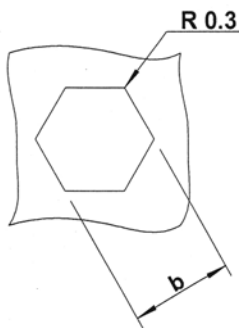
## Stainless Steel 316

(contains > 2% Molybden)

extra high  
corrosion resistance

Low profile head  
Semi-hexagonal shank  
Closed end

HUKX



Stainless Steel 316

| THREAD | TYPE   | E<br>= grip | L    | b <sup>+0,1</sup><br>= hex<br>hole | d<br>= hex<br>shank | D<br>= hex<br>head | K   | kg/1000 | ORDER<br>CODE | BOX<br>Q |
|--------|--------|-------------|------|------------------------------------|---------------------|--------------------|-----|---------|---------------|----------|
| M4     | HUKX20 | 0,5-2,0     | 15,5 | 6,0                                | 6,0                 | 6,5                | 0,5 | 1,8     | 554 620       | 2500     |
| M5     | HUKX30 | 0,5-3,0     | 18,0 | 7,0                                | 7,0                 | 7,5                | 0,5 | 2,7     | 555 620       | 2000     |
| M6     | HUKX30 | 0,5-3,0     | 21,5 | 9,0                                | 9,0                 | 9,5                | 0,5 | 5,7     | 556 540       | 1000     |
| M8     | HUKX30 | 0,5-3,0     | 24,0 | 11,0                               | 11,0                | 11,5               | 0,5 | 8,7     | 558 320       | 500      |
|        | HUKX55 | 3,0-5,5     | 26,5 |                                    |                     |                    |     | 9,1     | 558 340       | 500      |

**M10:** programme in progress

**Availability & other versions:** please contact our Sales Department

All dimensions in mm

Technical data subject to modification

