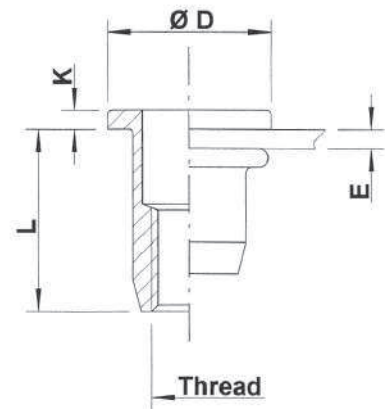
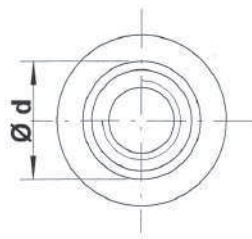




Stainless Steel 304

Round shank
Flat head
Open end
UPO / SPO



THREAD	TYPE	E = grip	L	b ^{+0,1} = drill dia	d = shank dia	D	K	kg/1000	ORDER CODE	BOX Small	BOX Large
M4	UPO20	0,5-2,0	11,0	6,0	6,0	9,0	1,0	1,5	544 010	(500)	7500
	UPO35	2,0-3,5	12,5					1,6	544 020	(500)	5000
M5	UPO30	0,5-3,0	11,5	7,0	7,0	10,0	1,0	1,8	545 040	(500)	4000
	UPO50	3,0-5,0	15,0					2,2	545 050	(500)	3000
M6	UPO30	0,5-3,0	14,5	9,0	9,0	12,0	1,5	4,1	546 020	(500)	2000
	UPO50	3,0-5,0	16,5					4,4	546 035	(500)	2000
	UPO70	5,0-7,0	18,5					4,7	546 050	(500)	2000
M8	UPO30	0,5-3,0	16,0	11,0	11,0	15,0	1,5	6,1	548 010	(500)	1250
	UPO55	3,0-5,5	18,5					6,5	548 020	(500)	1250
	UPO80	5,5-8,0	21,5					7,1	548 035	(500)	1000
M10	UPO30	0,8-3,0	18,5	12,1	12,0	15,0	1,0	5,9	540 020	(500)	1000
	UPO50	3,0-5,0	20,5					6,0	540 030	(500)	1000
M10	SPO35	0,8-3,5	21,5	13,0	13,0	17,0	1,5	10,2	540 600	(100)	750
	SPO60	3,5-6,0	24,0					10,9	540 605	(100)	750
	SPO85	6,0-8,5	26,5					12,0	540 606	-	-
M12	UPO40	1,0-4,0	25,0	16,0	16,0	23,0	2,0	19,8	542 020	(100)	400
	UPO70	3,0-7,0	28,0					21,0	542 050	(100)	300

Small box: only for DFS customers, not export - (xxx) handling cost can be charged

All dimensions in mm - Technical data subject to modification

