

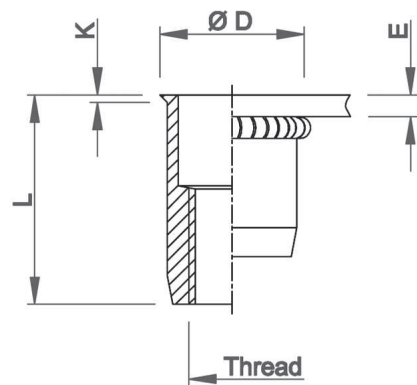
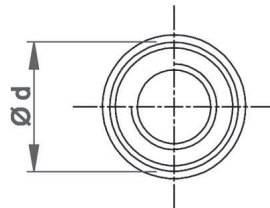
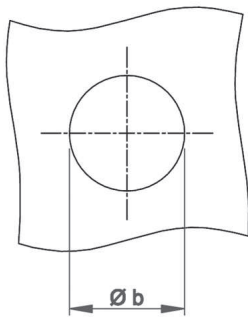


Stainless Steel 304

Knurled shank
Low profile head
Open end

UKO KN / SKO KN

improved nominal knurl



THREAD	TYPE	E = grip	L	b ^{+0,1} = drill dia	d = shank dia	D	K	kg/1000	ORDER CODE	BOX Small	BOX Large
M4	UKO20 KN	0,5-2,0	11,0	6,0	6,0	6,5	0,5	1,1	5442207	(500)	10000
M5	UKO30 KN	0,5-3,0	12,0	7,0	7,0	7,5	0,5	1,5	5454007	(500)	5000
	UKO50 KN	3,0-5,0	15,0								
M6	UKO30 KN	0,5-3,0	14,5	9,0	9,0	9,5	0,5	3,4	5464007	(500)	3000
	UKO50 KN	3,0-5,0	16,5								
M8	UKO30 KN	0,5-3,0	16,0	11,0	11,0	11,5	0,5	5,0	5481607	(500)	2000
	UKO55 KN	3,0-5,5	18,5								
M10	SKO35 KN	0,8-3,5	21,0	13,0	13,0	13,5	0,7	8,5	5406207*	-	1000

Small box: only for DFS customers, not export - (xxx) handling cost can be charged

* **Non-stock item:** minimum order quantity required after depletion of stock

KN programme in progress, also possible in SS316Cu

All dimensions in mm - Technical data subject to modification
Tolerances and characteristics see chapter 'Technical Information'

