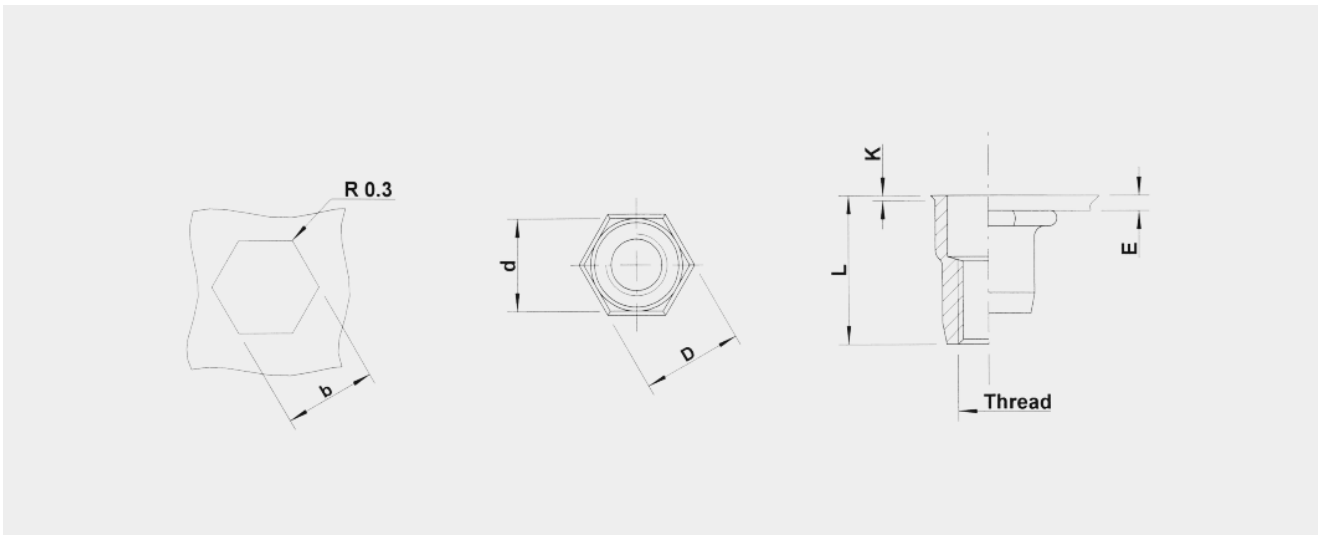


STAINLESS STEEL 304 HUKO / HSKO



- Stainless Steel 304
- Semi-hexagonal shank
- Low profile head
- Open
- **HUKO / HSKO**

DIMENSIONS



Thread	Type	E = grip	Total length = L	b ^{+0.1} = hex hole	d = hex shank	D = hex head	K	kg/1000	BOX Q	Order Code
M4	HUKO20	0,5 - 2,0	11,00	6,00	6,00	6,5	0,50	1,20	7500	544600
M4	HUKO30	2,0 - 3,0	12,00	6,00	6,00	6,5	0,50	1,30	7500	544909*
M5	HUKO30	0,5 - 3,0	12,00	7,00	7,00	7,5	0,50	1,50	5000	545600
M5	HUKO50	3,0 - 5,0	14,00	7,00	7,00	7,5	0,50	1,70	5000	545605
M6	HUKO30	0,5 - 3,0	14,50	9,00	9,00	9,7	0,50	3,30	3000	546500
M6	HUKO50	3,0 - 5,0	16,50	9,00	9,00	9,7	0,50	3,60	2500	546525
M6	HUKO70	5,0 - 7,0	18,50	9,00	9,00	9,7	0,50	3,90	2000	546580*



Thread	Type	E = grip	Total length = L	b ^{+0.1} = hex hole	d = hex shank	D = hex head	K	kg/ 1000	BOX Q	Order Code
M8	HUKO30	0,5 - 3,0	16,00	11,00	11,00	11,8	0,50	4,90	2000	548300
M8	HUKO55	3,0 - 5,5	18,50	11,00	11,00	11,8	0,50	5,30	1500	548305
M8	HUKO80	5,5 - 8,0	21,00	11,00	11,00	11,8	0,50	5,70	-	548310*
M10	HSKO35	0,8 - 3,5	21,00	13,00	13,00	13,8	0,70	8,40	1000	540640
M10	HSKO60	3,5 - 6,0	23,50	13,00	13,00	13,8	0,70	9,40	750	540645*
M12	HUKO70	4,0 - 7,0	29,40	16,00	16,00	17,5	1,10	17,00	500	542840
1/4-20 UNC	HUKO30	0,5 - 3,0	14,50	9,00	9,00	9,7	0,50	3,30	3000	547690
5/16-18 UNC	HUKO30	0,5 - 3,0	16,00	11,00	11,00	11,8	0,50	4,90	2000	547850
10-32 UNF	HUKO30	0,5 - 3,0	12,00	7,00	7,00	7,5	0,50	1,50	5000	549530

All dimensions in mm - Technical data subject to modification

*** Non-stock item: minimum order quantity required after depletion of stock**

Tolerances, general and technical characteristics : see materials, coatings, technical data

Thread	Type	E = grip	Total length = L	b ^{+0.004} = hex hole	d = hex shank	D = hex head	K	lbs/ 1000	BOX Q	Order Code
M4	HUKO20	0.020 - 0.079	0.433	0.236	0.236	0.256	0.020	2.646	7500	544600
M4	HUKO30	0.079 - 0.118	0.472	0.236	0.236	0.256	0.020	2.866	7500	544909
M5	HUKO30	0.020 - 0.118	0.472	0.276	0.276	0.295	0.020	3.307	5000	545600
M5	HUKO50	0.118 - 0.197	0.551	0.276	0.276	0.295	0.020	3.748	5000	545605
M6	HUKO30	0.020 - 0.118	0.571	0.354	0.354	0.382	0.020	7.275	3000	546500
M6	HUKO50	0.118 - 0.197	0.650	0.354	0.354	0.382	0.020	7.937	2500	546525
M6	HUKO70	0.197 - 0.276	0.728	0.354	0.354	0.382	0.020	8.598	2000	546580



Thread	Type	E = grip	Total length = L	b ^{+0.004} = hex hole	d = hex shank	D = hex head	K	lbs/1000	BOX Q	Order Code
M8	HUKO30	0.020 - 0.118	0.630	0.433	0.433	0.465	0.020	10.803	2000	548300
M8	HUKO55	0.118 - 0.217	0.728	0.433	0.433	0.465	0.020	11.684	1500	548305
M8	HUKO80	0.217 - 0.315	0.827	0.433	0.433	0.465	0.020	12.566	-	548310
M10	HSKO35	0.031 - 0.138	0.827	0.512	0.512	0.543	0.028	18.519	1000	540640
M10	HSKO60	0.138 - 0.236	0.925	0.512	0.512	0.543	0.028	20.723	750	540645
M12	HUKO70	0.157 - 0.276	1.157	0.630	0.630	0.689	0.043	37.479	500	542840
1/4-20 UNC	HUKO30	0.020 - 0.118	0.571	0.354	0.354	0.382	0.020	7.275	3000	547690
5/16-18 UNC	HUKO30	0.020 - 0.118	0.630	0.433	0.433	0.465	0.020	10.803	2000	547850
10-32 UNF	HUKO30	0.020 - 0.118	0.472	0.276	0.276	0.295	0.020	3.307	5000	549530

All dimensions in inches - Technical data subject to modification

*** Non-stock item: minimum order quantity required after depletion of stock**

Tolerances, general and technical characteristics : see materials, coatings, technical data

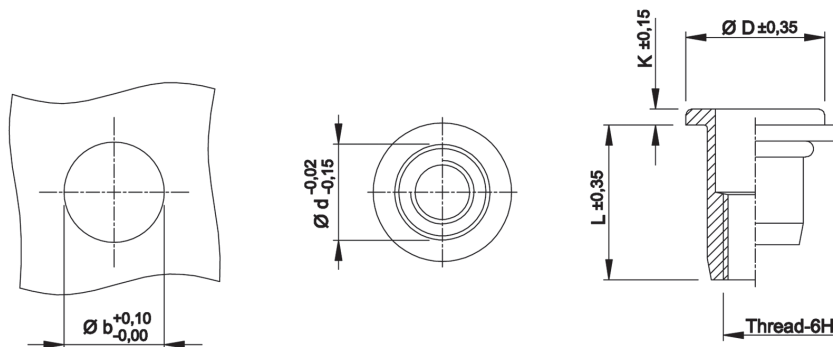


Technical Data

● General tolerances

	Head form	Dimensions in mm	Dimensions in inches
D (head diameter)	Flat head Countersunk head Low profile head	$\pm 0,35$ 0 -0,5 -0,15 +0,3	$\pm .014$ 0 -.020 -.006 +.012
K (head thickness)	Flat head Countersunk head Low profile head	$\pm 0,15$ 0 +0,3 -0,05 +0,3	$\pm .006$ 0 +.012 -.002 +.012
L (length)	General Stainless M10 shank 13 mm	$\pm 0,35$ $\pm 0,5$	$\pm .014$ $\pm .020$
Metric thread= 6H			
Shank size	General (incl. KN) Splined shank (RS) M10 shank 12,4 mm	-0,02 -0,15 $\pm 0,08$ $\pm 0,08$	-.001 -.006 $\pm .003$ $\pm .003$

Example:



● Recommended tightening torque values (Nm)

Max. recommended torque to avoid damaging the threaded connection and ensure optimal screw-nut assembly:

	M3	M4	M5	M6	M8	M10	M12
Aluminium	2,0	2,2	4,5	9,5	17,0	30,0	
Steel	2,5	3,0	5,9	11,0	25,0	49,0	80,0
Stainless Steel	2,5	3,0	5,9	11,0	25,0	49,0	

Recommendations for 8.8 bolts in steel and class A2-70 bolts in stainless steel.

For all technical information see our website:

<http://www.tubtara.com/technical-information>