

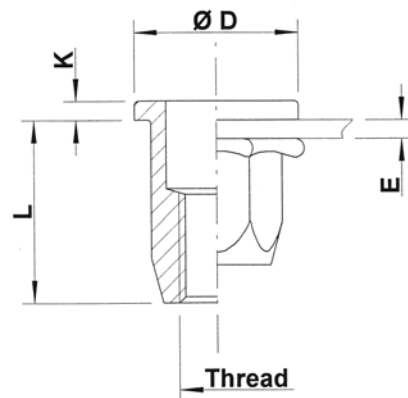
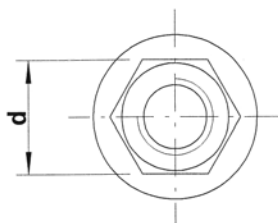
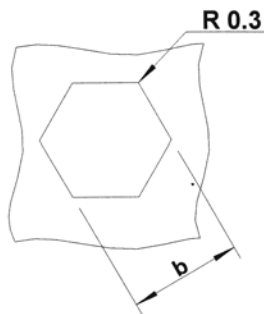


## Steel

Flat head  
Hexagonal shank  
Open end

Zinktop, Cr<sup>VI</sup> - free (A)  
Zinc plated, yellow passivated (B)

**HUPO / HSPO**



Steel

THREAD	TYPE	E = grip	L	b <sup>+0,1</sup> = hex hole	d = hex shank	D	K	kg/1000	ORDER CODE (A)	ORDER CODE (B)	BOX Q
M4	HUPO20	0,5-2,0	10,0	6,0	6,0	9,0	1,0	1,4	524 589	524 580	7000
M5	HUPO30	0,5-3,0	13,0	7,0	7,0	10,0	1,0	2,3	525 569	525 560	4000
M6	HUPO30	0,5-3,0	14,5	9,0	9,0	13,0	1,5	4,7	526 529	526 520	2000
	HUPO55	3,0-5,5	16,5					4,8	526 549	526 540	1750
M8	HUPO30	0,5-3,0	16,5	11,0	11,0	16,0	1,5	7,0	528 482	528 480	1200
	HUPO55	3,0-5,5	19,0					7,5	528 509	528 500	1000
	HUPO80	5,5-8,0	22,0					8,1	528 609*	528 600*	750
M10	HSPO35	0,8-3,5	21,0	13,0	13,0	19,0	2,0	11,6	520 649	520 640	700
	HSPO60	3,5-6,0	23,5					12,3	520 659	520 650	500

\* **Non-stock item:** minimum order quantity required after depletion of stock

All dimensions in mm

Technical data subject to modification

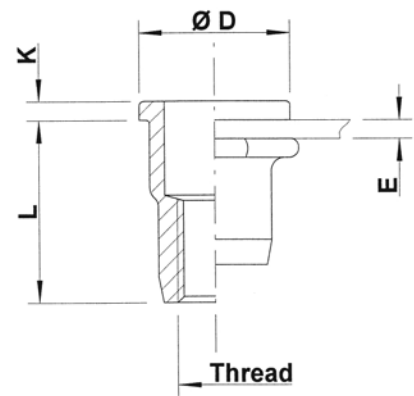
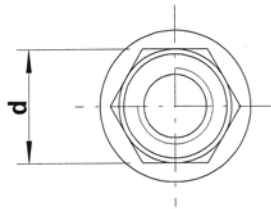
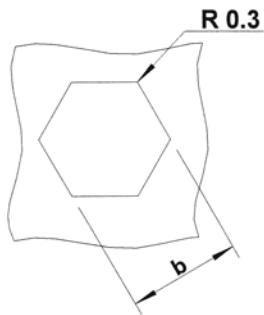


**Steel**

Flat head  
Semi-hexagonal shank  
Open end

Zinktop, Cr<sup>VI</sup>- free (A)  
Zinc plated, yellow passivated (B)

**HUPO**



Steel

THREAD	TYPE	E = grip	L	b <sup>+0,1</sup> = hex hole	d = hex shank	D	K	kg/1000	ORDER CODE (A)	ORDER CODE (B)	BOX Q
M12	HUPO40	1,0-4,0	25,0	16,0	16,0	23,0	2,0	19,6	522 509	522 500	350

All dimensions in mm  
Technical data subject to modification

