



TAPPEX THREAD INSERTS LTD

Masons Road, Stratford-upon-Avon,
Warwickshire, CV37 9NT.

T: +44 (0)1789 206 600

E: sales@tappex.co.uk

W: www.tappex.co.uk

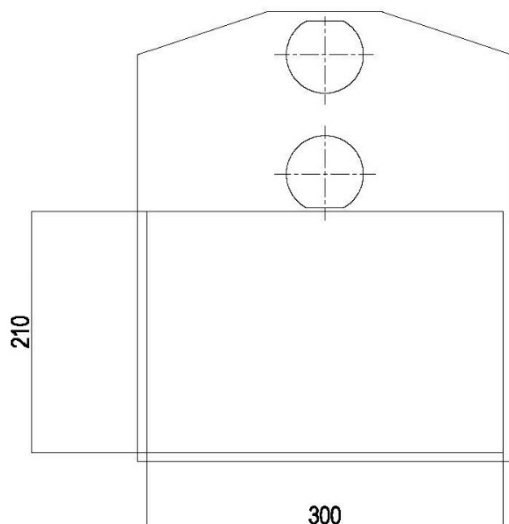
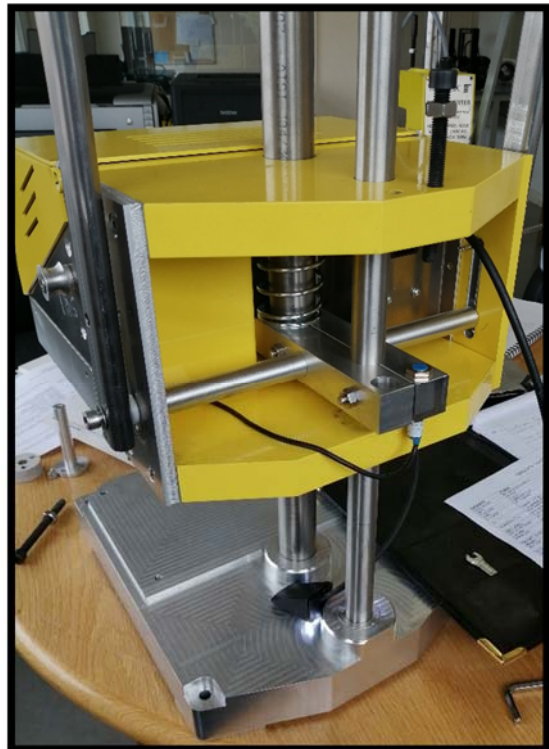
Tappex® Generation 3 Heat Inserter

- Part number 074/HIE/GEN3
- Machine sold as standard with a single heater cartridge fitted. The Generation 3 heat inserter is capable of installing up to 4 inserts at multiple heights at one time with additional cartridges fitted. This is application specific and there will be design work / additional machining required; please contact us for details and costing.
- Switched operator and setter modes.
- Secure, lockable setting enclosure.
- Installation Speed Control.
- Depth verification Indicator light.
- Variable Temperature up to 450 C.
- Adjustable Stop position.



- Operation handle suitable for left or right hand operation.
- Complete with 3 standard heat tips to suit Tappex inserts, selected at time of order.
- Voltage 110 - 230V AC 50 - 60Hz.

- Removable power lead with 2 or 3 pin plug fitted. (Customer to specify at time of order.)
- Output 400W, up to 4 off Max. 1600W.
- CE certified ; EMC – EN61000-6-4: 2007 + A1: 2001. Electrical safety - EN61010 – 1 : 2010 + A1 : 2019
- Machinable base plate and top plate for jigs and fixtures.
- Stroke length - 70 mm
- Rugged Construction.
- EA Producer registration number WEE/BJ0065TW.
- Twin mounting columns for increased stability.
- Maximum working height with tip removed 220 mm. (Standard tips protrude approximately 25 mm.)
- For use with Tappex[®] Multisert[®], Microbarb[®], Dedsert[®] and Suresert[®] female and male inserts.



- Work Area of 210mm x 300mm illuminated by dual LED lighting.

Please contact our technical sales team on (01789) 206 600 or via e-mail on sales@tappex.co.uk with your enquiries.