

## VariBase: The ready-to-install, height-adjustable table column

The pneumatic height adjustable system VariBase is a professional and extremely robust holistic solution for table applications. It is particularly characterized by ease of handling and Plug & Play installation. VariBase stands out for its application with a long service life and offers comfortable height adjustment.

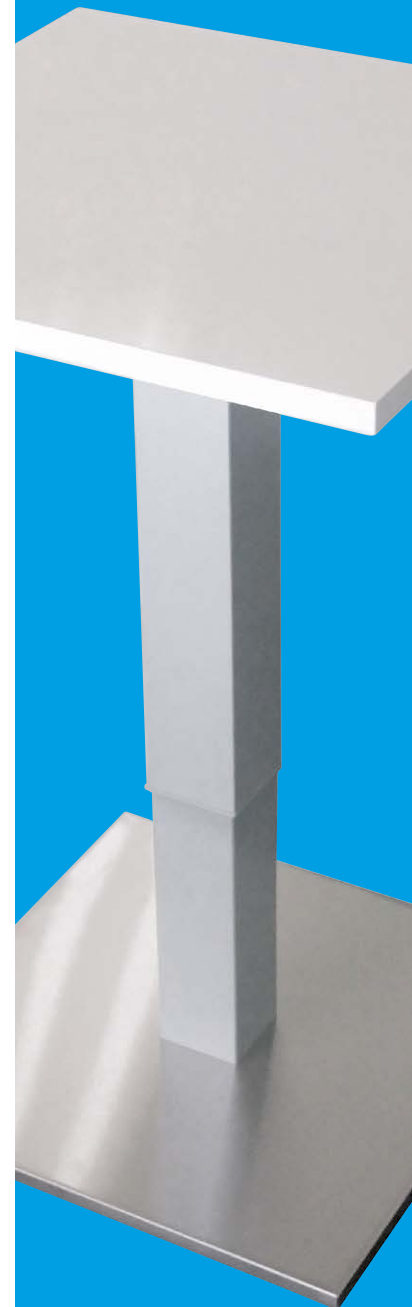
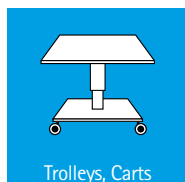
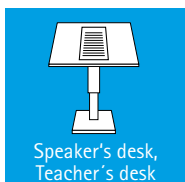


### Highlights

- Elegant design with square tubes
- Available in versions BTU - Big Tube Up and BTD - Big Tube Down
- Robust guide system
- Available in two versions of gas springs (rigid and elastic locking)
- Non-rotational column
- Quick and easy to adjust
- Plug & Play assembly

### Applications

- Use the VariBase as a ready-to-install height-adjustable system.
- Lay out your office equipment with modern design according to the latest ergonomic findings and knowledge.
- Bring flexibility into the classroom with height-adjustable school desks and lecterns.
- Make use of VariBase to convert the facilities in your property from a standing cafe in the morning to a cozy lounge in the evening.



SUSPA GmbH  
Mechanical Applications

Industriestr. 12-14  
90518 Altdorf  
Germany

Phone +49 9187 930 355  
Fax +49 9187 930 311

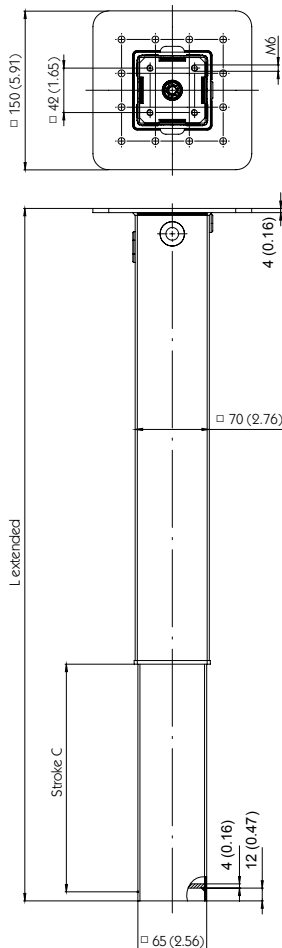
infoindustry@de.suspa.com  
www.suspa.com

## Specifications VariBase

Features	Values
Dimension BTU (Big Tube Up)	□ 70 / □ 65 mm (2.76 / 2.56 in)
Dimension BTD (Big Tube Down)	□ 60 / □ 65 mm (2.36 / 2.56 in)
Length when extended ( $L_{\text{extended}}$ )	1,040 mm (40.9 in)    815 mm (32.1 in)    655 mm (25.79 in)
Stroke	400 mm (15.75 in)    290 mm (11.42 in)    215 mm (8.46 in)
Length when compressed ( $L_{\text{compressed}}$ )	640 mm (25.2 in)    525 mm (20.67 in)    440 mm (17.32 in)
Stroke force	120 N, Recommended weight of table top: ~ 6 kg Further F1-force on request (70 – 400 N)
Surface finishing	Powder coated (RAL9006), further RAL-colors on request
Activation / release	Lever, cable release
Tabletop fitting	Flange adapter (with 12 drillholes, distance 32 mm, 1.26 in)
Base fitting	Flange
Non-rotation function	standard

### VariBase BTU

[mm] ([in])



### VariBase BTD

[mm] ([in])

