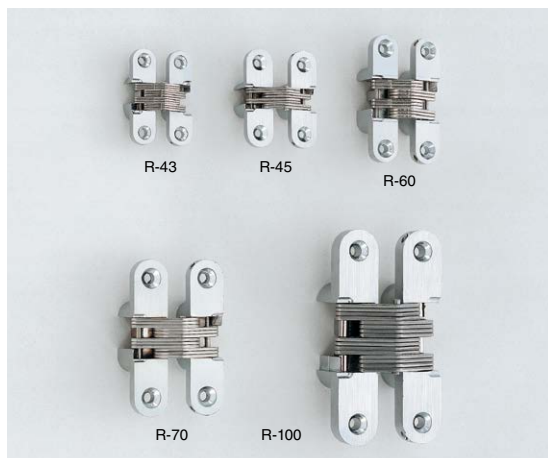


# CONCEALED HINGE R



- Stainless steel (SUS304) arm has sufficient strength and superior corrosion resistance.
- R-100 adopts a roller as guide pin, making smooth movement even under high load.
- Can be widely used from wooden doors to sheet metal doors.
- Torque hinge types also available [1](#).

**[Remarks]**

- Distance to door edge must be less than Xmm.
- Roller is supplied to R-100 only.
- Recommended for use in pairs.

**[Parts Included]**

- Countersunk head wood screw (SUS)
- Countersunk head tapping screw (SUS) (R-70 only)

Video Link



TORQUE HINGES

DAMPER HINGES

LIFT ASSIST HINGES

DETENT HINGES

CONCEALED HINGES

BUTT HINGES

PIANO HINGES

STEP HINGES

LIFT-OFF HINGES

PIVOT HINGES

SPRING HINGES

CLEAN ROOM HINGES

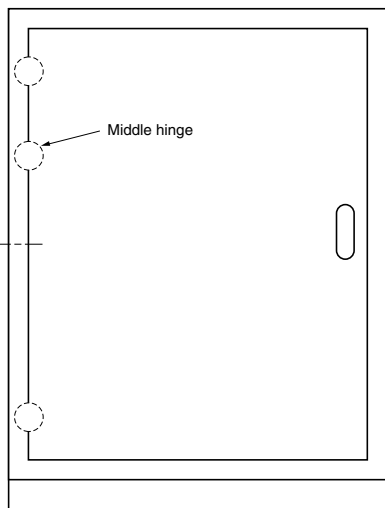
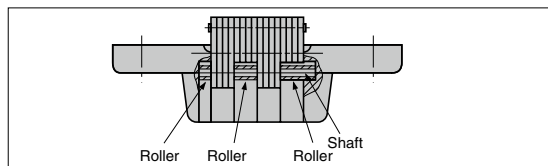
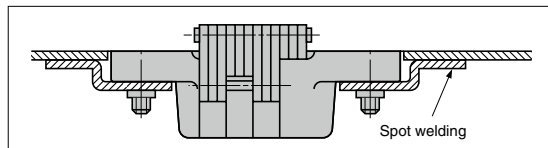
HINGES FOR ALUMINIUM FRAME

DROP HINGES

GLASS DOOR HINGES

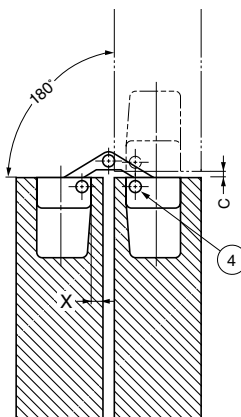
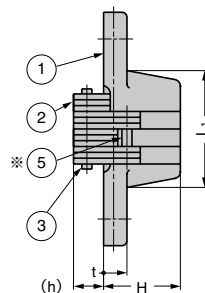
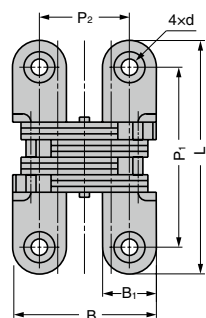
SPECIAL HINGES

**[Metal Door]**



**(Reference)**

When hanging a door with 3 hinges, a large load is applied to the upper hinge, so the middle hinge is preferably set at about 1/2 of the distance from the midpoint of upper and lower hinges to the upper hinge.



No.	Part Name	Material				Finish
		R-43	R-45	R-60	R-70	
①	Body	Zinc Alloy				Satin Chrome
②	Arm	Stainless Steel (SUS304)				Plain
③	Shaft	Stainless Steel		Stainless Steel	Stainless Steel	
④	Shaft	Stainless Steel (SUS304)		Stainless Steel (SUS303)	Steel	
⑤	Shaft	Stainless Steel (SUS304)				Nickel
※	Roller (R-100 only)	-				

R#S	CAD	Item Code	Item Name	L	L1	B	B1	P1	P2	H	h	t	d	C	X	Screw	Number of Arms	Door Width	Door Height	Door Weight kg/2 pcs	Opening Angle	Weight (g)	Box (pcs)	Carton (pcs)
G	SD	170-090-079	R-43	43	22	29	11		18	13	5		φ3.5 φ6.2	0.8	2.3	3.1×16	12	Max.	450	700	180°	37	30	300
G	SD	170-090-084	R-45	45	19	35.7	13		22.7	18.5	6	5	φ3.5 φ7		3	3.1×20	8					56	20	200
G	SD	170-090-081	R-60	60	33	35.2		47	22.2		6.5	6.5	φ4.3 φ8.3	1		3.5×20	12					94	10	100
G	SD	170-095-200	R-70	70	35	42.6	16.1	53	26.6	23	7.3	7	φ4.6 φ9.1	1.2	3.5	4×25						157	10	-
G	SD	170-095-201	R-100	100	52	53.2	20	80	33.2	27.5	9.5	9.5	φ5.3 φ10	1.8	4.8	4.5×32	16			Max. 7	342	10	60	

Refer to [1](#) : P.82