

RECESSED FOLDING HOOK NF-45D soft-close type



- Self-retracting hook with soft-close mechanism.
- The hook tip is designed for easy opening.
- Becomes flat when retracted.
- The edges are gently rounded for safe use.

[Applications]

- Cabinet, trains

[Sold Separately]

- Hook bracket for sheet metal NF-45DB

[Recommended Screw]

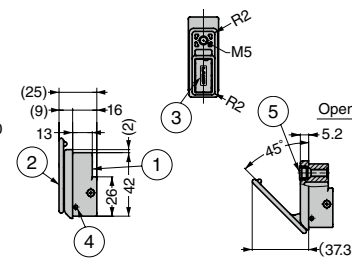
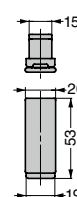
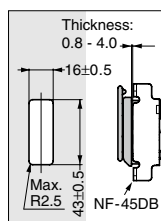
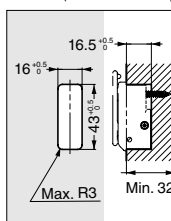
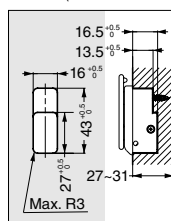
- 27 - 31 mm thick wood: cross-recessed countersunk tapping screw 4 × 25
- 32 mm or thicker wood: cross-recessed countersunk tapping screw 4 × 30

[Video Link](#)


[Retractable] [Cut Out Dimensions]



- Wood (27 - 31 mm thick)
- Wood (31 mm or thicker)
- Sheet metal



RoHS	CAD	Item Code	Item Name	Colour	Load Capacity of the Tip		Load Capacity of the Base		Weight (g)	Box (pcs)	Carton (pcs)
					N	kgf	N	kgf			
6	3D	110-044-460	NF-45D-GR	Grey	93	9.5	500	51	32	10	200
6	3D	110-044-461	NF-45D-BL	Black						10	200
6	3D	110-044-462	NF-45D-SSL	Silver						10	200
6	3D	110-046-695	NF-45D-WT	White						10	200

No.	Part Name	Material	Finish/Colour
①	Body	Aluminium Alloy (ADC)	Black / White
②	Arm		Gray / Black / Silver / White
③	Cover		Black
④	Knurling Pin	Stainless Steel (SUS304)	Plain
⑤	Spring	Chloroprene Rubber (CR)	Black / White
⑥	Cushion Rubber		

RECESSED FOLDING HOOK NF-60DF soft-close type / Surface Mount on Sheet Metal

TEST METHOD 18


NF-60DF-BL



Retracted

- Easy installation and removal. Surface mount type on sheet metal.
- Arm automatically and slowly closes when hooked items are removed.
- Handhold at hook tip allows for easy opening.
- Little projection when hook is retracted.

[Applications]

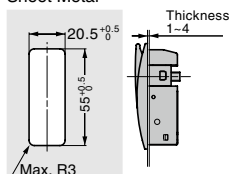
- Cabinet, vehicle, etc.

[Remarks]

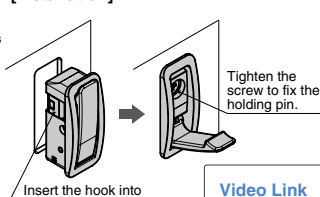
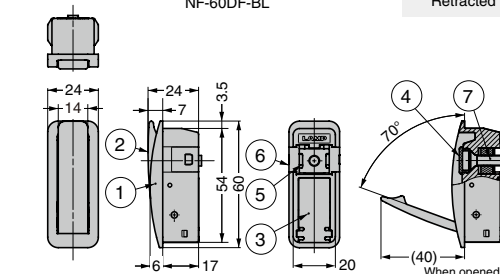
- Please take off the cushion rubber when tighten the screw and put it on again when finished.
- Please do not tighten the screw too much (recommended fastening torque: 3N·m).

[Cut Out Dimensions]

Sheet Metal



[Installation]


[Video Link](#)


No.	Part Name	Material	Finish / Colour
①	Body	Aluminium Alloy	Black, Metallic Silver
②	Arm	(ADC)	
③	Cover	POM	Dark Grey
④	Cushion Rubber	CR	Black, Metallic Silver
⑤	Nut	ZDC	Chromate
⑥	Holding Pin	Stainless Steel (SUS304)	Plain
⑦	Screw		

[Body]

RoHS	CAD	Item Code	Item Name	Colour	Load Capacity N	Load Capacity kgf	Weight (g)	Box (pcs)	Carton (pcs)
—	3D	110-037-738	NF-60DF-BL	Black	294	30	54	10	200
—	3D	110-037-740	NF-60DF-MSL	Metallic Silver				10	200