

MAGNETIC LATCH HANDLE MLH Flat / Round



- Flat latch handle with mortise lock case.
- The handle does not protrude when the door is closed.
- The magnet allows for automatic and smooth latching.
- The plastic coating on the latch reduces metallic clinking noise.
- Recommended to use together with the HES3D and HES2S-140-A125 hinge.

[Parts Included]

- Cover
 - Stainless steel cross-recessed tapping screws, ST 4.2 x 25 (4)
 - Stainless steel cross-recessed small screws, M4 x 16 (2) (for door thicknesses 35-39 [32-36] mm)
 - Stainless steel cross-recessed small screws, M4 x 20 (2) (for door thicknesses 40-45 [37-42] mm)
- (Note: Values in brackets are for surfaces with handles)

Conceals the drilled hole inside the handle

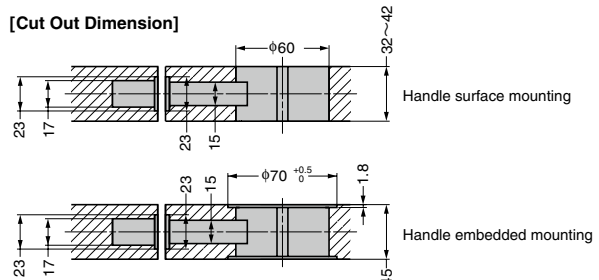
[Installation Examples]



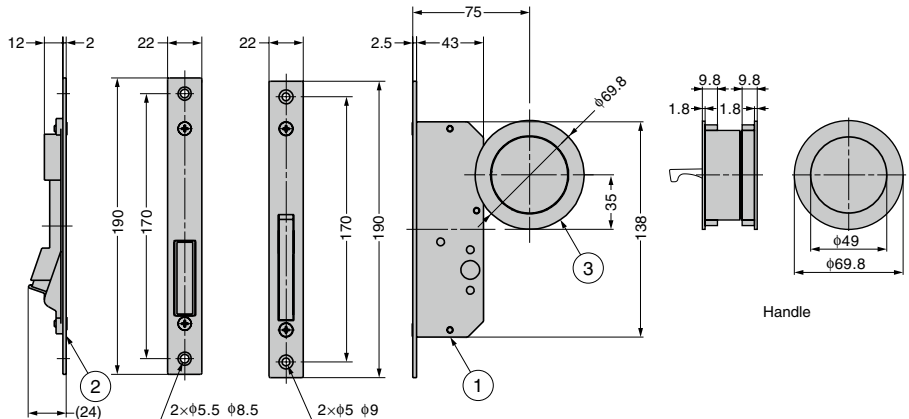
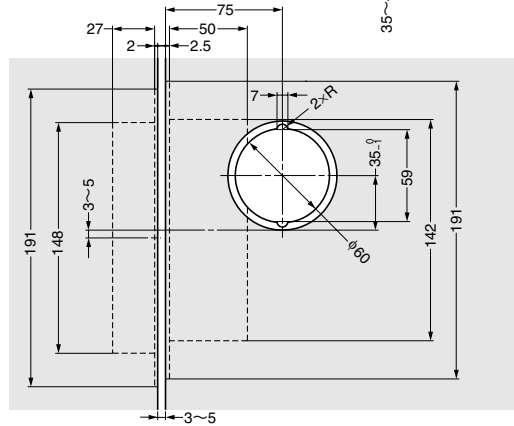
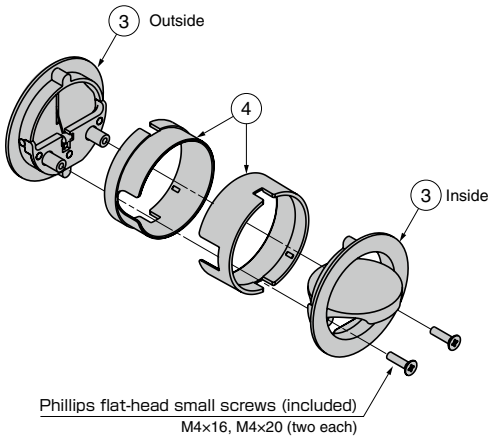
When using the handle

When the handle is retracted

[Cut Out Dimension]



[Handle ③ and Cover ④] (Non-handed)



[Handle + case lock set]

RchS	CAD	Item Code	Item Name	Weight (g)
-	●	260-024-534	MLH-SN	757

No.	Part Name	Material	Finish/Colour
①	Latch unit	Zinc alloy (ZDC)	-
②	Strike plate	Stainless steel (SUS304)	
③	Handle	Zinc alloy (ZDC)	Satin nickel finish
④	Cover	ABS plastic	Black

①-④ are included in the "Handle + case lock" set

MAGNETIC LATCH HANDLE **MLHS** Flat / Square



- Flat latch handle with mortise lock case.
- The handle does not protrude when the door is closed.
- The magnet allows for automatic and smooth latching.
- The plastic coating on the latch reduces metallic clinking noise.
- Recommended to use together with the HES3D and HES2S-140-A125 hinge.

[Parts Included]

- Cover
 - Stainless steel cross-recessed tapping screws, ST 4.2 x 25 (4)
 - Stainless steel cross-recessed small screws, M4 x 16 (2) (for door thicknesses 35-39 [32-36] mm)
 - Stainless steel cross-recessed small screws, M4 x 20 (2) (for door thicknesses 40-45 [37-42] mm)
- (Note: Values in brackets are for surfaces with handles)

Conceals the drilled hole inside the handle

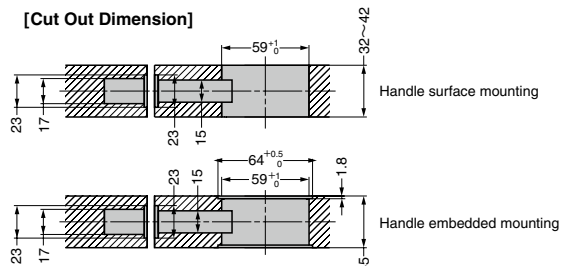
[Installation Examples]



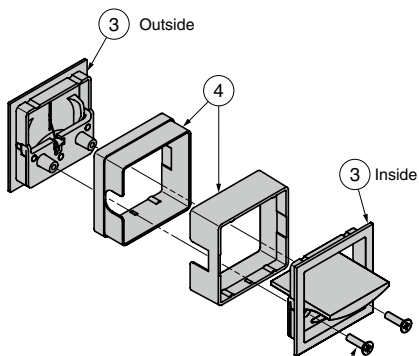
When using the handle

When the handle is retracted

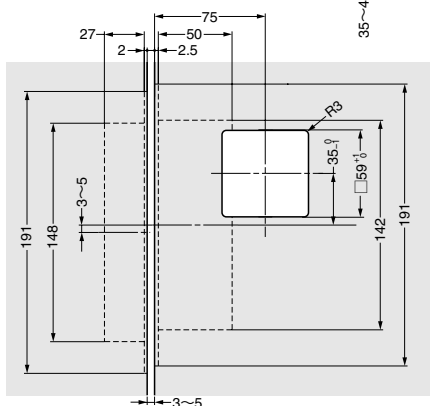
[Cut Out Dimension]



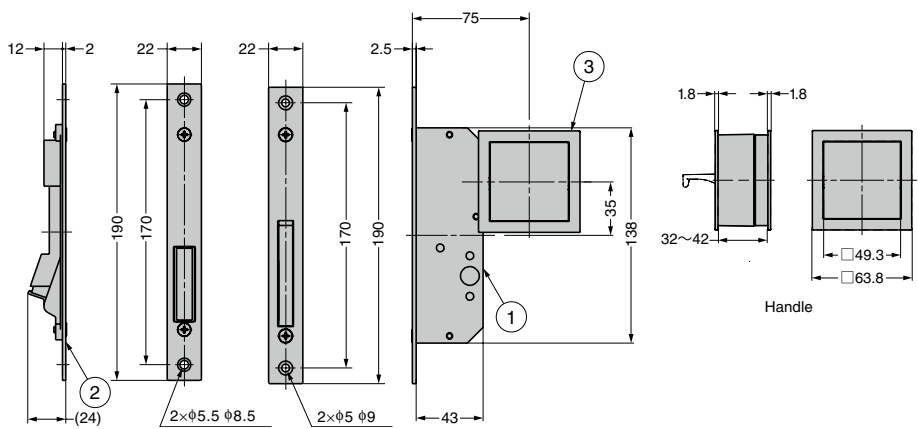
[Handle ③ and Cover ④] (Non-handed)



Phillips flat-head small screws (included)
M4x16, M4x20 (two each)



Processing on the corner is also available with R3 (as shown on the left).



Handle + case lock

[Handle + case lock set]

RoHS	CAD	Item Code	Item Name	Weight (g)
-	●	260-028-998	MLHS-SN	770

No.	Part Name	Material	Finish/Colour
①	Latch unit	Zinc alloy (ZDC)	-
②	Strike plate	Stainless steel (SUS304)	-
③	Handle	Zinc alloy (ZDC)	Satin nickel finish
④	Cover	ABS plastic	Black

①-④ are included in the "Handle + case lock" set



Video Link