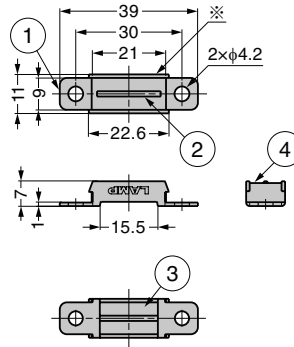


MAGNETIC CATCH MC-YN005 Centre Yoke Type



- Thin magnetic catch ideal for tight spaces.
- Heat resistance type MC-YN005HP 1 of the same shape also available.
- Small body with strong magnetic force.
- MC-YN005 (ferrite magnet type) made of stainless steel with excellent rust prevention.
- AS parts set (below) for installing to aluminium frame also available.
- Neodymium magnet type MC-YN005N is newly launched.
- *part is marked with item name for identification.

[Body]

RoHS	CAD	Item Code	Item Name	Magnet	Magnetic Force N	Magnetic Force kgf	Weight (g)	Box (pcs)	Carton (pcs)
		140-059-558	MC-YN005	Ferrite	29.4	3	9	200	1000
		140-026-512	MC-YN005-N	Neodymium	73.5	7.5	10	200	1000

Refer to 1 : P.434, 2 : P.431

[Applications]

- Food equipment, kitchen equipment, etc.

[Remarks]

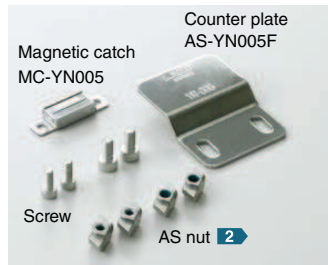
- Be sure to read the "Cautions" 2 .

No.	Part Name	Material		Finish	
		MC-YN005	MC-YN005-N	MC-YN005	MC-YN005-N
①	Yoke	Stainless Steel (SUS430)	Stainless Steel (SUS430)	Plain	Barrel Polished
②	Yoke	Stainless Steel (SUS430)	Stainless Steel (SUS430)		Barrel Polished
③	Magnet	Ferrite	Neodymium		Nickel
④	Cover	Stainless Steel (SUS304)	Stainless Steel (SUS304)		Plain



Parts Set for Installing to Aluminium Frame

Please refer to the series introduction page 1 for details about AS series.

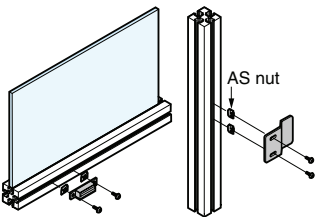


[AS Parts Set] Parts set of brackets, counter plate, screws and AS nuts used for installing to aluminium frame

RoHS	CAD	Item Code	Item Name	Aluminium Frame	Parts	Weight (g)
	-	140-041-501	AS-MC-YN005-30-6	30×30 Groove Width 6 mm	Magnetic Catch MC-YN005 : 1 pc Counter Plate AS-YN005F : 1 pc AS Nut AS-6M4 : 4 pcs M4 X 10 Hexagon Socket Button Head Screw : 4 pcs	-
	-	140-041-502	AS-MC-YN005-30-8	30×30 Groove Width 8 mm	Magnetic Catch MC-YN005 : 1 pc Counter Plate AS-YN005F : 1 pc	-
	-	140-041-503	AS-MC-YN005-40-8	40×40 Groove Width 8 mm	AS Nut AS-8M4 : 4 pcs M4 X 10 Hexagon Socket Button Head Screw : 4 pcs	-
	-	140-041-504	AS-MC-YN005-40-10	40×40 Groove Width 10 mm	Magnetic Catch MC-YN005 : 1 pc Counter Plate AS-YN005F : 1 pc AS Nut AS-10M4 : 4 pcs M4 X 12 Hexagon Socket Button Head Screw : 4 pcs	-
	-	140-041-505	AS-MC-YN005-40-8-30-6	Door: 30×30 Groove Width 6 mm Frame: 40×40 Groove Width 8 mm	Magnetic Catch MC-YN005 : 1 pc Counter Plate AS-YN005D : 1 pc AS Nut AS-6M4 : 2 pcs AS Nut AS-8M4 : 2 pcs M4 X 10 Hexagon Socket Button Head Screw : 4 pcs	-
	-	140-041-506	AS-MC-YN005-40-10-30-8	Door: 30×30 Groove Width 8 mm Frame: 40×40 Groove Width 10 mm	Magnetic Catch MC-YN005 : 1 pc Counter Plate AS-YN005D : 1 pc AS Nut AS-8M4 : 2 pcs AS Nut AS-10M4 : 2 pcs M4 X 10 Hexagon Socket Button Head Screw : 2 pcs M4 X 12 Hexagon Socket Button Head Screw : 2 pcs	-

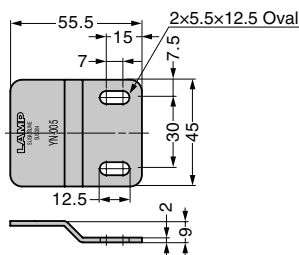
[Installation]

[Counter Plate Installation]

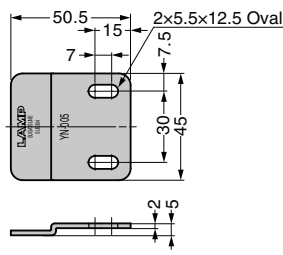


Refer to 1 : P.20, 2 : P.526

STAINLESS STEEL COUNTER PLATE AS-YN005



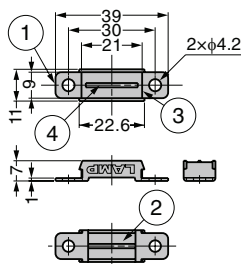
Counter Plate AS-YN005F (Flat type)



Counter Plate AS-YN005D (Stepped type)

RoHS	CAD	Item Code	Item Name	Material	Finish	Weight (g)	Box (pcs)	Carton (pcs)
		140-090-696	AS-YN005D	Stainless Steel	Barrel	-	50	300
		140-090-697	AS-YN005F	(SUS430)	Polished	38	50	300

MAGNETIC CATCH MC-YN005HP Centre Yoke Type



No.	Part Name	Material	Finish
①	Yoke	Stainless Steel (SUS430)	Barrel Polished
②	Magnet	Samarium Cobalt	Plain
③	Cover	Stainless Steel (SUS304)	
④	Yoke	Stainless Steel (SUS430)	Barrel Polished

- Suitable for high temperature environments up to 250°C . Non-heat resistance type MC-YN005 ① of the same shape also available.
- Anti rust: made of stainless steel.
- Thin magnetic catch ideal for tight spaces.
- Small body with strong magnetic force.

[Applications]

- Kitchen, experimental equipment, etc.

[Sold Separately]

- Counter plate (SUS) MC-JM49 ③

[Remarks]

- Be sure to read the "Cautions" ② .

[Body]

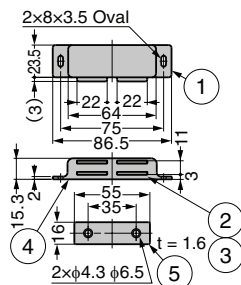
RoHS	CAD	Item Code	Item Name	Magnetic Force N	Magnetic Force kgf	Weight (g)	Box (pcs)	Carton (pcs)
④	③	140-012-617	MC-YN005HP-20	20	2	11	200	1000
④	③	140-012-625	MC-YN005HP-50	50	5.1		200	1000

[Counter Plate] Sold Separately

RoHS	CAD	Item Code	Item Name	Weight (g)	Box (pcs)	Carton (pcs)
④	③	140-050-149	MC-JM49	10	100	1000

Refer to ① : P.433, ② : P.431, ③ : P.464

MAGNETIC CATCH SB11A-AA-1 With Spring



- Built-in spring in the yoke reduces impact.

[Remarks]

- Be sure to read the "Cautions" ① .

[Parts Included]

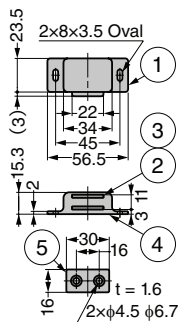
- Counter Plate

No.	Part Name	Material	Finish
①	Body	Aluminium Alloy	Gold Anodised
②	Yoke	Steel (SPCC)	Nickel
③	Magnet	Ferrite	-
④	Cover	Aluminium Alloy	
⑤	Counter Plate	Steel (SPCC)	Nickel

RoHS	CAD	Item Code	Item Name	Magnetic Force N	Magnetic Force kgf	Weight (g)	Box (pcs)	Carton (pcs)
-	③	140-050-160	SB11A-AA-1	68.6	7	72	20	200

Refer to ① : P.431

MAGNETIC CATCH SB11B-AA-1 With Spring



- Built-in spring in the yoke reduces impact.

[Remarks]

- Be sure to read the "Cautions" ① .

[Parts Included]

- Counter plate

No.	Part Name	Material	Finish
①	Body	Aluminium Alloy	Gold Anodised
②	Yoke	Steel (SPCC)	Nickel
③	Magnet	Ferrite	-
④	Cover	Aluminium Alloy	
⑤	Counter Plate	Steel (SPCC)	Nickel

RoHS	CAD	Item Code	Item Name	Magnetic Force N	Magnetic Force kgf	Weight (g)	Box (pcs)	Carton (pcs)
④	③	140-050-161	SB11B-AA-1	39.2	4	36.7	40	400

Refer to ① : P.431