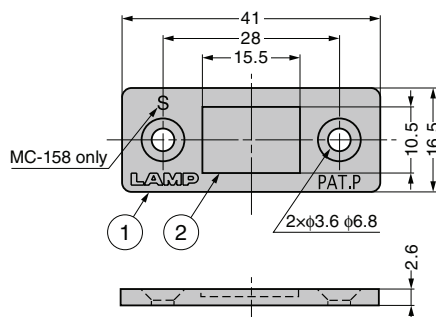








## MAGNETIC CATCH MC-158, MC-159



\*Without the mark "PAT.P" from the next production lot.

## [Magnetic Catch]

RoHS	CAD	Item Code	Item Name	Magnetic Force N	Magnetic Force kgf	Weight (g)	Box (pcs)	Carton (pcs)
		140-050-014	MC-158	14.7	1.5	12	200	1000
		140-058-061	MC-159	39	4		200	1000
		140-038-023	MC-159-BL				200	1000

Refer to : P.444, : P.431

- Ultra thin magnetic catch of 2.6mm thick ideal for tight spaces.
- Small body with strong magnetic force by using neodymium magnet.
- Similar items (extra strong magnetic force): MC-159-8 , MC-159-SUS .
- AS parts set (below) for installing to aluminium frame also available.

## [Remarks]

- Be sure to read the "Cautions" .
- Max. temperature: 80°C
- The counter plate should be in contact with the body. Direct contact with the magnet may break the magnet.
- Only MC-158 is marked with "S" to differentiate it from MC-159 (see the drawing below)

## [Recommended Screws]

- Countersunk head screw M3 or Countersunk head wood screw 3.1

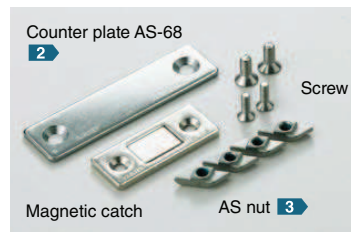
## [Counter Plate] Sold Separately

RoHS	CAD	Item Code	Item Name
		140-059-555	MC-YN001U
		140-038-025	MC-YN001U-BL

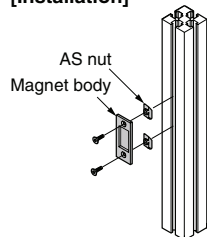


## Parts Set for Installing to Aluminium Frame Please refer to the series introduction page for details about AS series.

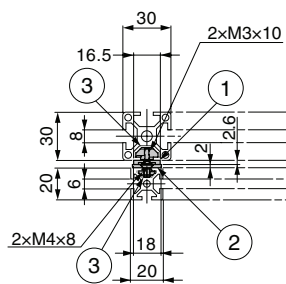
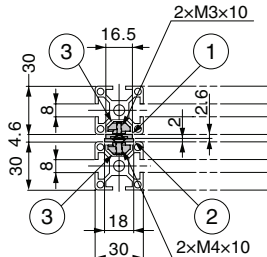
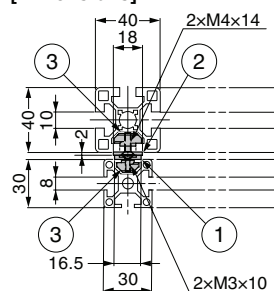
## [AS Parts Set] Parts set of counter plate, screws and AS nuts used for installing to aluminium frame



## [Installation]



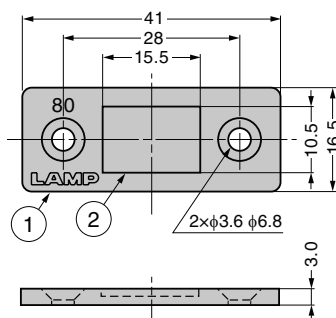
## [Dimensions]



No.	Product Name
①	Magnetic Catch MC-159
②	Counter Plate AS-68
③	AS Nut

Refer to : P.20, : P.464, : P.526

## MAGNETIC CATCH MC-159-8 Strong Force Type



- Ultra thin magnetic catch of 3mm thick ideal for tight spaces.
- Small body with extra strong magnetic force by using neodymium magnet.
- Similar items (different magnetic force): MC-158, MC-159 **1**, MC-159-SUS **2**.

### [Remarks]

- Be sure to read the "Cautions" **3**.
- Max. temperature: 80°C
- The counter plate should be in contact with the body. Direct contact with the magnet may break the magnet.

### [Recommended Screws]

- Countersunk head screw M3 or Countersunk head wood screw 3.1

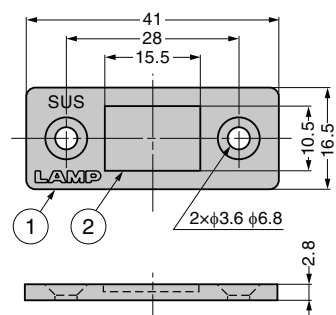
No.	Part Name	Material	Finish
①	Body	Steel	Nickel
②	Magnet	Neodymium	

RoHS	CAD	Item Code	Item Name	Magnetic Force N	Magnetic Force kgf	Weight (g)	Box (pcs)	Carton (pcs)
		140-026-510	MC-159-8	78.4	8	14	200	1000

Refer to **1** : P.443, **2** : P.444, **3** : P.431

## MAGNETIC CATCH MC-159-SUS

SUS



- Anti rust: made of stainless steel and acrylic resin coated magnet.
- Ultra thin magnetic catch of 2.8mm thick ideal for tight spaces.
- Small body with strong magnetic force by using neodymium magnet.
- Similar items (different magnetic force): MC-158, MC-159 **1**, MC-159-8 **2**.

### [Remarks]

- Be sure to read the "Cautions" **3**.
- Max. temperature: 80°C
- The counter plate should be in contact with the body. Direct contact with the magnet may break the magnet.

### [Recommended Screws]

- Countersunk head screw M3 or Countersunk head wood screw 3.1

No.	Part Name	Material	Finish
①	Body	Stainless Steel (SUS430)	Barrel Polished
②	Magnet	Neodymium	Nickel

RoHS	CAD	Item Code	Item Name	Magnetic Force N	Magnetic Force kgf	Weight (g)	Box (pcs)	Carton (pcs)
		140-026-511	MC-159-SUS	49	5	13	200	1000

Refer to **1** : P.443, **2** : P.444, **3** : P.431

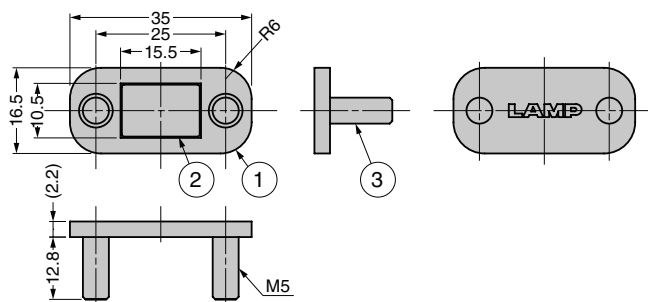
## STAINLESS STEEL MAGNETIC CATCH MC-159-STD Ultra-thin / Back-mount

SUS



Front

Back



RoHS	CAD	Item Code	Item Name	Magnetic Force		Weight (g)
				N	kgf	
		140-045-567	MC-159-2-STD	19.6	2	14
		140-045-568	MC-159-4-STD	39.2	4	

Refer to : P.431

- The bolts are designed to be fixed with nuts from the back side. As there are no screw heads, it is easy to keep the flat surface clean.
- Neodymium magnet is used for strong force.
- 2.2 mm ultra-thin design.
- Counter plate of back-mount type is also available.

## [Remarks]

- Be sure to read the "Cautions" .
- Max. temperature: 80°C
- The counter plate to be used with should be in contact with the catch body. If an object makes direct surface contact with the magnet, it may break and no longer work properly.

## [Parts Included]

- Hexagon nut M5 stainless steel (SUS304)

No.	Part Name	Material	Finish/Colour
①	Body	Stainless Steel (SUS430)	Barrel Polished
②	Magnet	Neodymium	Nickel
③	Stud Bolt	Stainless Steel (SUS303)	—

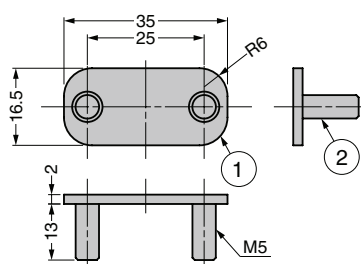
## STAINLESS STEEL COUNTER PLATE MC-159U-STD Back-mount

SUS



Front

Back



RoHS	CAD	Item Code	Item Name	Weight (g)	Box (pcs)	Carton (pcs)
		140-045-569	MC-159U-STD	13.2	50	1,000

- The bolts are designed to be fixed with nuts from the back side. As there are no screw heads, it is easy to keep the flat surface clean.

## [Parts Included]

- Hexagon nut M5 stainless steel (SUS304)

No.	Part Name	Material	Finish/Colour
①	Body	Stainless Steel (SUS430)	Barrel Polished
②	Stud Bolt	Stainless Steel (SUS303)	—