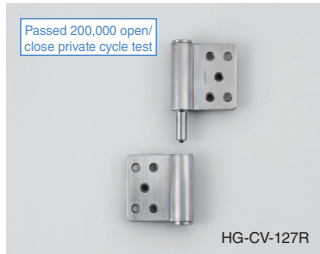
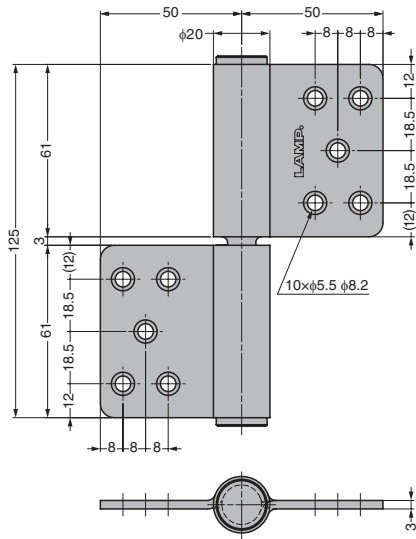
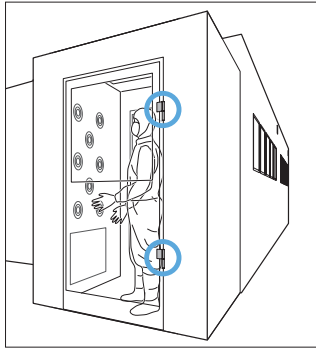


CLEAN ROOM HINGE HG-CV-127

SUS



[Application Example]



Drawing above is HG-CV-127R.

- Suitable for use in a clean room.
- Built-in thrust bearing and needle bearing reduce metal-to-metal friction.
- Seal of rotating part prevents metal powder from scattering.
- Welded curl part provides excellent durability.

[Applications]

- Semiconductor manufacturing equipment, clean room, etc.

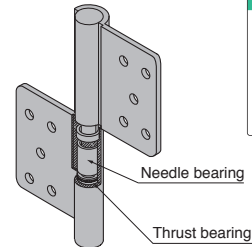
[Remarks]

- Install the shaft downwards on the door side.
- Load capacity and open/close test under the following conditions: door size H2000×W900mm, door weight 100kg, two hinges used, installation pitch 1600mm.
- The shaft may be difficult to pull out because there is very little clearance in the structure. Forcible removal may result in damage.

Selection Tool

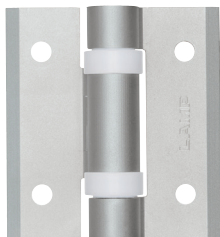


Hinge Selection



RoHS	CAD	Item Code	Item Name	Type	Material	Finish	Load Capacity N/2 pcs	Load Capacity kgf/2 pcs	Weight (g)	Box (pcs)	Carton (pcs)
		170-013-013	HG-CV-127L	Left-handed	Stainless Steel	Satin/	981	100	388	10	50
		170-014-422	HG-CV-127R	Right-handed	(SUS304)	Polished				10	50

CLEAN ROOM TORQUE HINGE HG-CVT



HG-CVT65-15

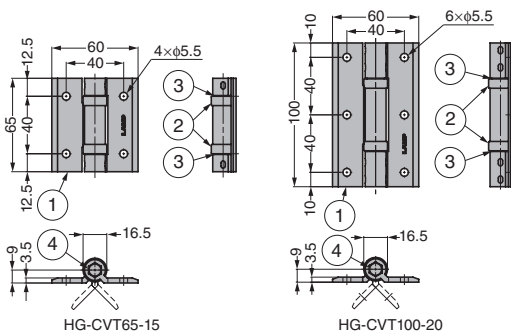
- Retains the door at any angle.
- Plastic caps at rotating part prevent metal-to-metal friction and metal powder scattering.
- Can be used horizontally or vertically.

[Applications]

- Semiconductor manufacturing equipment, clean room, aluminium frame, household equipment, etc.

[Remarks]

- Be sure to read the "Cautions"
- When installing, ensure that both hinge shafts are aligned.



No.	Part Name	Material	Finish / Colour
①	Body	Aluminium Alloy	Anodised Silver
②	Cap	POM	Natural
③	Washer	PTFE	White
④	Shaft	Stainless Steel (SUS303)	-

RoHS	CAD	Item Code	Item Name	Torque N-m	Torque kgf-cm	Weight (g)
		170-053-302	HG-CVT65-15	1.5 ±30%	15.3 ±30%	62
		170-053-303	HG-CVT100-20	2.0 ±25%	20.4 ±25%	102

Refer to : P.43