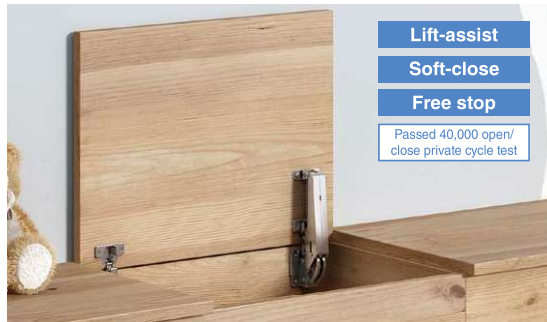


LIFT
ASSIST
STAYSSOFT
CLOSING
STAYSTORQUE
STAYSHEAVY DUTY
LOCKING
STAYSFOOT
STAYSLID
STAYSOTHER
STAYSTOP-
OPENINGDOWNWARD-
OPENINGUPWARD-
OPENINGBOTTOM-
OPENINGSWING
DOOR

LIFT-UP

LIFT-
DOWNUP &
OVERBI-
FOLDINGOVER
THE
TOPAILERON STAY FOR OLYMPIA **ARN-2** Top-opening Model

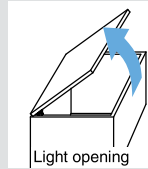
L=R INSTRUCTION



[Door Movements]

Lift-assist

Allows for light opening of doors



Light opening

Soft-close

OLYMPIA's damper makes doors close slowly. (0° - 30°)



Gently closing

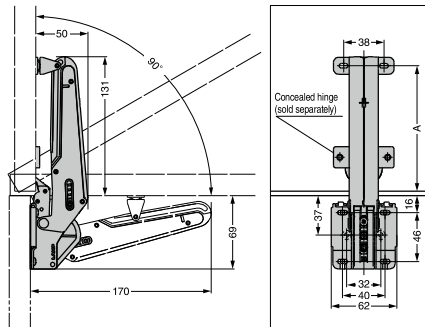
Free-stop

Enables doors to hold in position.



Holds in position

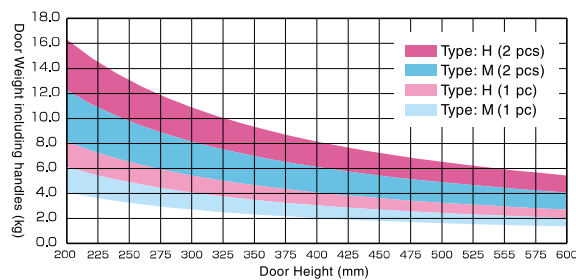
[Installation]



Hinge Used	A
360-D26-19T	118
H360-D26-26T	116

Please see pages of Olympia hinges for installation dimensions.

[Selection Graph] (upward and top-opening models)



[Aileron Stay] Sold singly

RoHS	CAD	Item Code	Item Name	Material	Finish / Colour	Type	Max. Door Moment N·m/pc	Max. Door Moment kgf·cm/pc	Box (pc)	Carton (pc)
✓	3D	180-043-945	ARN-2-M-GR	Steel (SPCC) / POM	Nickel plating /	M	4.0 ~ 6.0	40.8 ~ 61.2	1	20
✓	3D	180-043-946	ARN-2-H-GR		Grey	H	6.0 ~ 8.0	61.2 ~ 81.6	1	20
✓	3D	180-049-501	ARN-2-M-BL		Nickel plating /	M	4.0 ~ 6.0	40.8 ~ 61.2	1	20
✓	3D	180-049-502	ARN-2-H-BL		Black	H	6.0 ~ 8.0	61.2 ~ 81.6	1	20

[Standard Set] Including parts sold separately

RoHS	CAD	Item Code	Item Name	Finish / Colour	Door Width	Max. Door Moment N·m	Max. Door Moment kgf·cm	Set Contents	Box (pc)	Carton (pc)
✓	—	180-045-661	ARN-2-M-GR-S	Nickel plating /	450 ~ 900	4.0 ~ 6.0	40.8 ~ 61.2	Aileron stay, Mounting plate for Aileron stay, Olympia hinge, Mounting plate for Olympia hinge, Screws	1	10
✓	—	180-045-662	ARN-2-H-GR-S	Grey		6.0 ~ 8.0	61.2 ~ 81.6		1	10
✓	—	180-049-505	ARN-2-M-BL-S	Nickel plating /		4.0 ~ 6.0	40.8 ~ 61.2		1	10
✓	—	180-049-506	ARN-2-H-BL-S	Black		6.0 ~ 8.0	61.2 ~ 81.6		1	10

Opening	Description	Non-handed	Type	Maximum Door Moment
Top-opening	Lift-assist Soft-close Free-stop	Yes	M	4.0~6.0 N·m/pc (40.8~61.2 kgf·cm/pc)
			H	6.0~8.0 N·m/pc (61.2~81.6 kgf·cm/pc)

- Smooth door movement. It is specially designed for use with the OLYMPIA concealed hinge (360-D26-19 / H360-D26-26T).
- The lift-assist function allows for light opening of doors.
- The force of lift-assist is adjustable.
- The soft-close function makes doors close gently (0°~30° degrees).
- Integrated design combines a concealed hinge and lid stay.
- The free-stop function enables doors to hold in position.
- Closing speed of doors is adjustable.

[Specifications]

- Operating temperature: 0°C ~ 40°C

[Parts Included]

- Door-side mounting plate
- Countersunk head tapping screw 3.5 × 1.5 (for attaching the mounting plate to AILERON)
- Binding head tapping screw 3.5 × 1.5 (for attaching the door-side mounting plate, mounting plate for AILERON, and AILERON)

[Optional Parts]

- Hinge spacer 360-BCS
- Aileron spacer ARN-DP
- Mounting plate for AILERON
- OLYMPIA concealed hinge
- Mounting plate for OLYMPIA

[Sold Separately]

Video Link



Video Link



[Application Example]

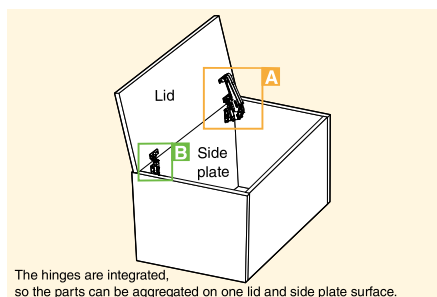


Selection Tool

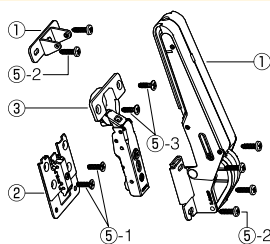


Sasuga-kun

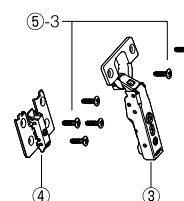
Components for one lid



A With AILERON







B No AILERON



Required parts for one lid ([A] + [B])

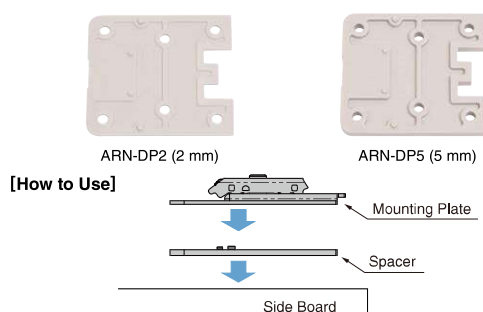
The required quantity depends on lid width and maximum moment.

		Lid width [mm]															
		450~900				900~1600				1600~2000							
		Lid max. moment [N·m]															
		4.0 6.0	6.0 8.0	8.0 12.0	12.0 16.0	4.0 6.0	6.0 8.0	8.0 12.0	12.0 16.0	4.0 6.0	6.0 8.0	8.0 12.0	12.0 16.0				
AILERON	① Body		180-043-945 or 180-049-501	ARN-2-M-GR or ARN-2-M-BL	Standard Set		2	-	1	-	2	-	1	-	2	-	
	② Washer		180-043-946 or 180-049-502	ARN-2-H-GR or ARN-2-H-BL	-	1	-	2	-	1	-	2	-	1	-	2	-
			180-043-949	ARN-SZ	1		2		1		2		1		2		
OLYMPIA CONCEALED HINGE	③ Body		160-026-840 or 160-029-084	360-D26-19T or H360-D26-26T (damper built-in)	2		3		2		3		2		3		
			160-026-836 or 160-029-081	360-26-19T or H360-26-26T (no catch)	-		-		1		-		2		-		
			160-026-832 or 160-029-078	360-C26-19T or H360-C26-26T (with catch)	-		-		-		-		-		1		
	④ Washer		160-026-846 *1	360-P6WT (System 32/4 holes)	1		1		2		1		3		2		
	⑤ Recommended Screws				2		4		2		4		2		4		
				6		12		6		12		6		12			
				8 *2		10*2		14 *2		10*2		20*2		16 *2			

*1 For ④ Washer, 360-P4W-32T (Item Code: 160-026-845) and 360-P4W-30T (Item Code: 160-026-844) can also be used.

*2 Quantity when using ④ Washer 360-P6WT. When using 360-P4W-32T or 360-P4W-30T, the required quantity is reduced by one for each washer.

AILERON SPACER ARN-DP 2 and 5 mm Thick



[Spacer]

RoHS	CAD	Item Code	Item Name	Colour	Type	Material	Box (pcs)	Carton (pcs)
		180-046-667	ARN-DP2	Grey	+ 2 mm	POM	80	640
		180-047-915	ARN-DP5	Grey	+ 5 mm (screw included)	POM	80	640

Refer to 1 : P.316, P.350, 2 : P.317, P.351

- Specially designed for use with the AILERON stay 1.
- The ARN-DP2 decreases overlay of outset doors by 2 mm.
- The ARN-DP5 decreases overlay of outset doors by 5 mm.
- The ARN-DP2 can be doubled for 4 mm thickness.

[Available Mounting Plate]

- ARN-SZ 2

[Remarks]

- The included screws are for fixing the spacer (ARN-DP5) and mounting plate (ARN-SZ).
- Please use the optional screws if two ARN-DP2 are used.

[Parts Included]

- Cross-recessed binding head tapping screw 3.5×20 (Only the ARN-DP5 comes with these screws.)

[Optional screw when using two ARN-DP2]

RoHS	CAD	Item Code	Item Name
		180-046-669	TAP3520NI

Sold in sets of 4 screws.

LIFT
ASSIST
STAYS

SOFT
CLOSING
STAYS

TORQUE
STAYS

HEAVY DUTY
LOCKING
STAYS

FOOT
STAYS

LID
STAYS

OTHER
STAYS

TOP-
OPENING

DOWNWARD-
OPENING

UPWARD-
OPENING

BOTTOM-
OPENING

SWING
DOOR

LIFT-UP

LIFT-
DOWN

UP &
OVER

BI-
FOLDING

OVER
THE
TOP