

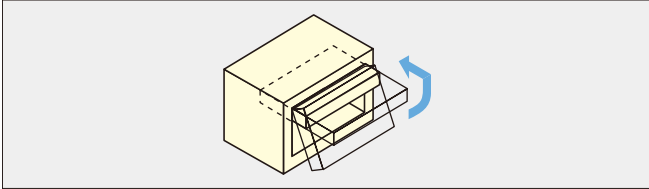


LAMP INSET RECEDING DOOR MECHANISM ALT-3H



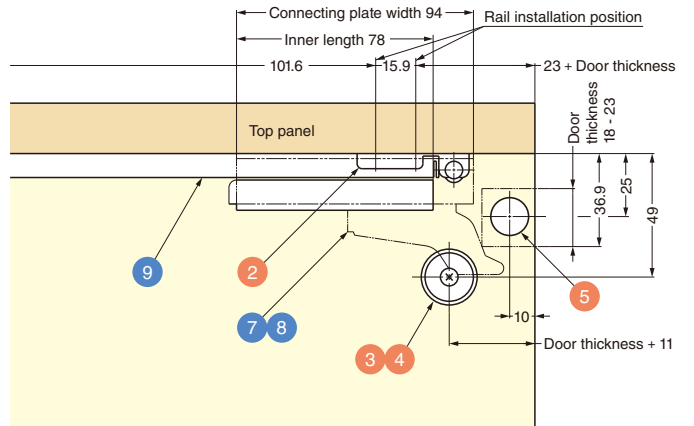
Door Width	Max. 870 mm
Door Height	Max. 600 mm
Door Thickness	18 - 23 mm
Door Weight	Max. 5 kg

- For upward-opening flap doors.
- When open, flap door recedes horizontally inside cabinet, significantly reducing dead space.
- Easy to install combination of concealed hinge and slide rail.

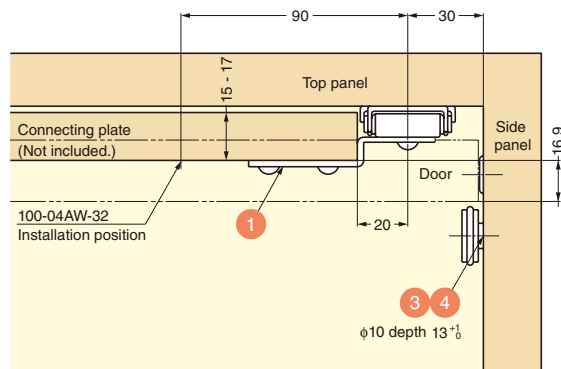
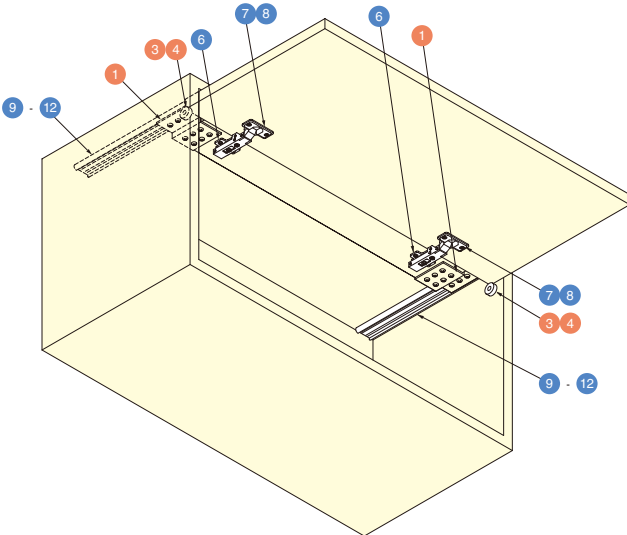


SCREW

Item Name	Door Storage	Cabinet Depth
AL-78-14	266+Door Thickness mm	Min. 371
AL-78-16	317+Door Thickness mm	Min. 422
AL-78-19	393+Door Thickness mm	Min. 498
AL-78-24	520+Door Thickness mm	Min. 625

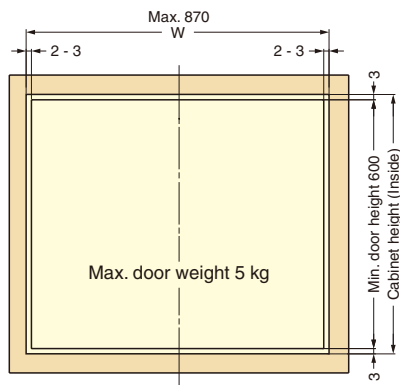


Installation

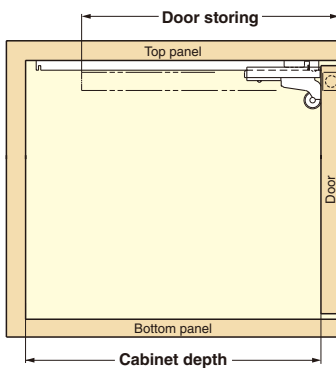


Cut Out Dimensions

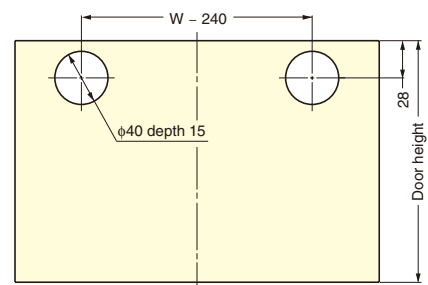
Cabinet front



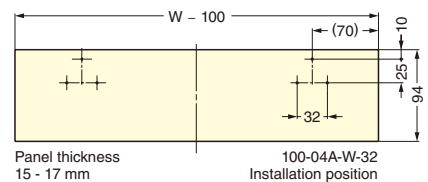
Cabinet cutaway view



Door cut out dimensions



Connecting plate (Wooden)



• Required Parts **Parts Set** + **Mounting Plate** + **Concealed Hinge (Body)** + **Rails**

Parts Set Required Parts

Item Code	Item Name
180-110-587	ALT-3HP

Parts Included

No.	Qty	Parts Name	Dimensions	Description
1	1 pair (left and right)	Adapter HR, HL		<ul style="list-style-type: none"> Material Steel Finish Yellow Zinc Chromate (trivalent)
2	2 pcs	Door Stopper		<p>Item Code : 180-930-416 Item Name : ALT-AD</p> <ul style="list-style-type: none"> Material EPDM / Steel Finish Clear Zinc Chromate / White
3	2 pcs	Roller		<p>Item Code : 180-940-144 Item Name : DU19-B4SBR</p> <ul style="list-style-type: none"> Material EPDM / Steel Finish Clear Zinc Chromate / White
4	2 pcs	Insert		<p>Item Code : 120-041-310 Item Name : SC-107-13</p> <ul style="list-style-type: none"> Material PA Finish White
5	2 pcs	Slider		<p>Item Code : 210-030-122 Item Name : F-15</p> <ul style="list-style-type: none"> Material POM Finish Natural

Mounting Plate

Required Parts

2 pcs are necessary for 1 door.

No.	Qty	Item Code	Parts Name	Dimensions	Description
6	1 pc	160-074-116	Mounting Plate		<ul style="list-style-type: none"> Material Steel Finish Yellow Zinc Chromate / Satin Chrome

Concealed Hinge (Body)

Required Parts (Select One)

Choose either 7/8. 2 pcs are necessary for 1 door.

No.	Catch	Qty	Item Code	Parts Name	Dimensions	Description
7	w/ Catch	1 pc	160-073-581	Concealed Hinge (Body)		<ul style="list-style-type: none"> Material Zinc Alloy Finish Satin Chrome
			H90-C34/18			
8	w/o Catch	1 pc	160-073-577	Concealed Hinge (Body)		<ul style="list-style-type: none"> Material Zinc Alloy Finish Satin Chrome
			H90-34/18			

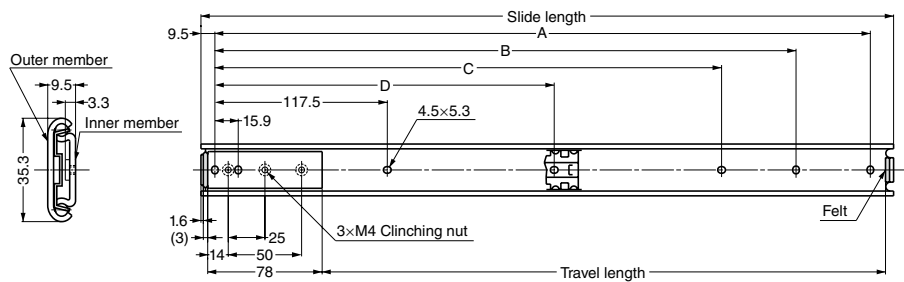
Rails

Required Parts (Select One)

Choose either 9/10/11/12. 2 pcs are necessary for 1 door.

No.	Slide Length	Qty	Item Code	Parts Name	Dimensions	Description
9	355.6 mm	1 pc	190-113-945	Rail		<ul style="list-style-type: none"> Material Steel Finish Clear Zinc Chromate
			AL-78-14			
10	406.4 mm	1 pc	190-113-942			
			AL-78-16			
11	482.6 mm	1 pc	190-113-943	Rail		<ul style="list-style-type: none"> Material Steel Finish Clear Zinc Chromate
			AL-78-19			
12	609.6 mm	1 pc	190-113-944	Rail		<ul style="list-style-type: none"> Material Steel Finish Clear Zinc Chromate
			AL-78-24			

Rails (Sold Separately)



Item Name	Slide Length	Travel Length	A	B	C	D	Weight	Carton
AL-78-14	355.6	267.6	336.6	320.7	219.1	-	274 g	20 pcs
AL-78-16	406.4	318.4	387.4	371.5	269.9	-	308 g	20 pcs
AL-78-19	482.6	394.6	463.6	447.7	346.1	231.8	357 g	40 pcs
AL-78-24	609.6	521.6	590.6	574.7	473.1	295.3	450 g	40 pcs

This information provides a range of quality for the component. It does not ensure the performance or safety of the final product incorporating the component.

SELECTION GUIDE

DAMPER STAYS

TORQUE STAYS

LIFT-ASSIST STAYS

LID STAYS

TOP-OPENING

UPWARD-OPENING

DOWNWARD-OPENING

BOTTOM-OPENING

LIFT-UP

LIFT-DOWN

UP & OVER

BIFOLDING

INSET RECEDING

OVER THE TOP

SWING DOOR