

# STAINLESS STEEL PUSH LOCK FASTENER 152FT Mini/Flush Type



- Insert plug into socket and push to lock/unlock.
- Flush locked design prevents accidental release. Push with sharp-pointed object to release.
- Fast and easy installation/removal of panel.
- Locked cam prevents release by vibration.
- Stainless steel construction suitable for corrosive environments.

**[Remarks]**

- Load applied directly to the body may cause damage.

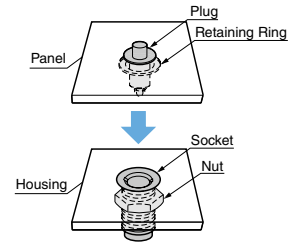
**[When plug is pushed]**



**[Installation Image]**



Flush to prevent release afterward

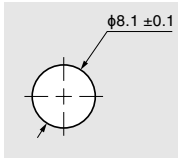


Consists of four parts: "plug", "ring", "socket" and "nut".

**[Panel Side Mounting Hole Dimensions]**

● **Hole**

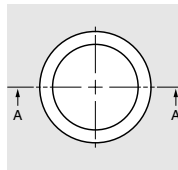
Door thickness  $T_1 = 0.8$  to  $4.8$



**[Housing Side Mounting Hole Dimensions]**

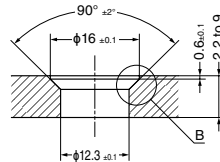
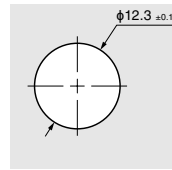
● **Countersink hole**

Door thickness  $T_2 = 2.2$  to  $9$

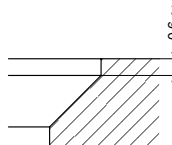


● **No countersink hole**

Door thickness  $T_2 = 0.8$  to  $7.5$



A-A Cross-Section

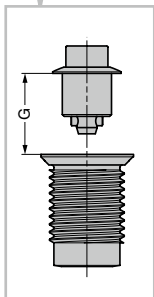


Detailed Figure B

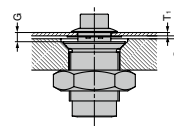
**[Grip Dimensions]**

**Grip dimension G**

The distance from the plug flange bottom surface to the socket top surface is the grip dimension G. Set so that the grip dimension G is 1.2 to 6.

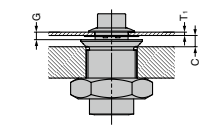


● **For countersink hole**

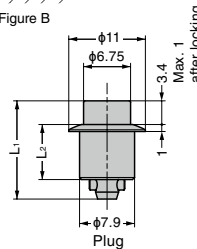


$G = \text{panel thickness } T_1 + \text{clearance } C + 0.7$

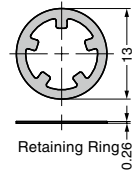
● **For non-countersink hole**



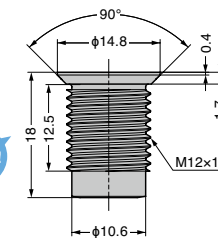
$G = \text{panel thickness } T_1 + \text{clearance } C - 1.7$   
Clearance  $C = 2.4$  or higher



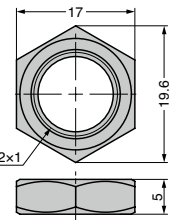
Plug



Retaining Ring



Socket



Nut

RoHS	CAD	Item Code	Item Name	Material	Grip Dimension G	Plug Dimension L <sub>1</sub>	Plug Dimension L <sub>2</sub>	Retaining Force N	Retaining Force kgf	Weight (g)
CE	3D	120-050-628	152FT-12-SS	Stainless Steel	1.2~2	14.1	7.9	147	15	18
CE	3D	120-050-629	152FT-20-SS		2~2.8	14.9				
CE	3D	120-050-630	152FT-28-SS		2.8~3.6	15.7				
CE	3D	120-050-631	152FT-36-SS		3.6~4.4	16.5	10.3			
CE	3D	120-050-632	152FT-44-SS		4.4~5.2	17.3				
CE	3D	120-050-633	152FT-52-SS		5.2~6	18.1				