



PROPRIETARY ITEM - EXCEPT FOR USES EXPRESSLY GRANTED IN WRITING INFORMATION DISCLOSED HEREON IS CONFIDENTIAL AND ALL RIGHTS PATENT AND OTHERWISE ARE RESERVED BY SOUTHCO, INC.

# TL SLIDE LATCH ASSEMBLY

DATE	DRAWN	CHKD	SCALE	DRAWING NUMBER
07OCT2005	MJS	RLR	2:1	J-TL-05-100

REV	DATE	DRAWN/CHKD	DESCRIPTION	PART NUMBER	MATERIAL	FINISH	HANDLE TYPE
A	13DEC2005	BS/MDY	PRN: P2005-1768	TL-05-100-07	STEEL	ZINC PLATE, TRIVALENT CHROMATE	UP
B	01AUG2006	RLR/MJS	PRN: P2006-1044	TL-05-100-52	STAINLESS STEEL	PASSIVATE	UP
C	07MAR2012	CMS/JCK	PRN: P2012-0317	TL-05-110-07	STEEL	ZINC PLATE, TRIVALENT CHROMATE	DOWN
				TL-05-110-52	STAINLESS STEEL	PASSIVATE	DOWN

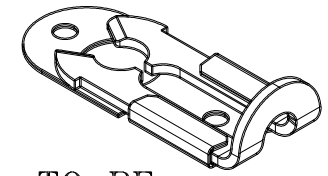
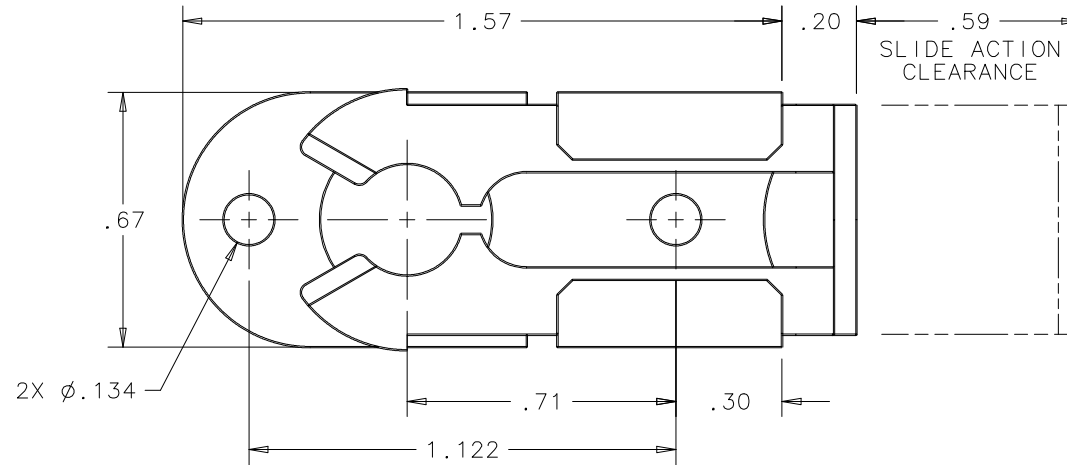
**INCHES**

ALL DIMENSIONS WITHOUT TOLERANCES ARE FOR REFERENCE ONLY.

THIRD ANGLE PROJECTION

A PAPER SIZE

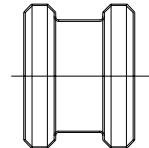
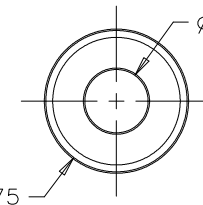
NOTE: RoHS COMPLIANT



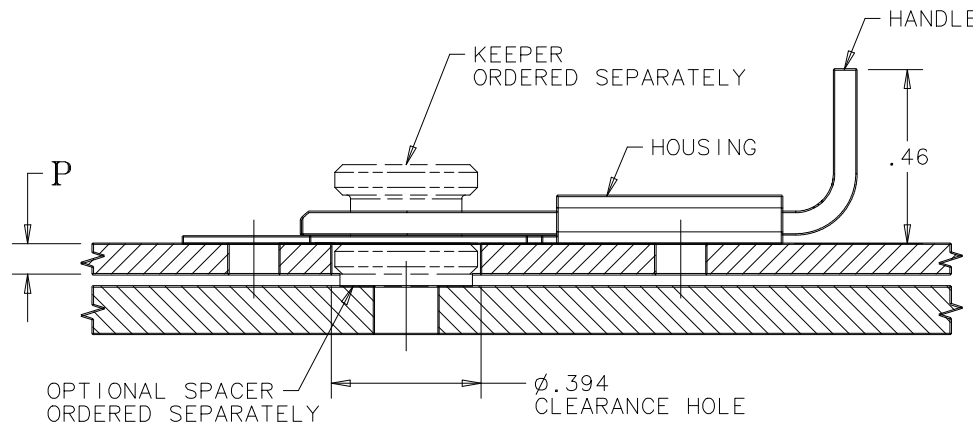
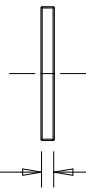
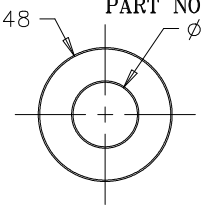
TO BE USED WITH



KEEPER  
(ORDERED SEPARATELY)  
PART NO. TL-05-117-07  
52



STEEL SPACER  
(ORDERED SEPARATELY)  
OPTIONAL  
PART NO. TL-05-114-07



PANEL THICKNESS P	REQUIRED NO. OF SPACERS
.046 - .080	0
.081 - .128	1
.129 - .160	2