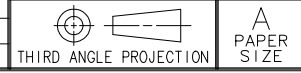


| REV | DATE | DRAWN/CHKD | DESCRIPTION | ITEM | PART NUMBER | MATERIAL | FINISH | |
|-----|-----------|------------|-----------------|----------|-------------|----------------|-----------|--|
| A | 19JUL2005 | MJS/MDY | PRN: P2005-0891 | ASSEMBLY | R5-0074-XX | - | - | |
| B | 02NOV2005 | AAB/RLR | PRN: P2005-1562 | HOUSING | - | CARBON STEEL | SEE TABLE | |
| C | 13APR2006 | AJH/RLR | PRN: P2006-0569 | CAM | - | HARDENED STEEL | SEE TABLE | |
| D | 23JUN2006 | RLR/MJS | PRN: P2006-0872 | TRIGGER | - | CARBON STEEL | SEE TABLE | |
| E | 09JUL2009 | MJS/MJS | PRN: P2009-0835 | HOOKS | - | HARDENED STEEL | SEE TABLE | |
| F | 22FEB2010 | ACH/ACH | PRN: P2010-0047 | | | | | |
| G | 05JUL2011 | ACH/MSR | PRN: P2011-0864 | | | | | |
| H | 02JUN2012 | ACH/RMD | PRN: P2012-0867 | | | | | |

INCHES

ALL DIMENSIONS WITHOUT TOLERANCES ARE FOR REFERENCE ONLY.



NOTES:

- A. THE TRIGGER MUST BE ACTIVATED TO THE "OPEN" POSITION BEFORE ATTEMPTING TO ACTUATE THE LATCH. THIS IS ACCOMPLISHED BY ROTATING THE HOOK BACK INTO THE HOUSING UNTIL IT STOPS, THEN APPLYING ADDITIONAL TORQUE TO ACTIVATE THE TRIGGER. IF THE TRIGGER IS NOT IN THE "OPEN" POSITION PRIOR TO CONTACT WITH THE PIN, THE LATCH WILL NOT FUNCTION PROPERLY.

| XX | FINISH |
|----|---|
| 07 | ZINC PLATED, CHROMATE DIP (RoHS COMPLIANT) |
| 08 | ZINC PLATED, YELLOW CHROMATE DIP |
| 27 | STAINLESS STEEL, PASSIVATED |
| 77 | ZINC NICKEL PLATE, YELLOW CHROMATE DIP |
| 94 | ZINC PLATE, CHROMATE DIP PLUS SEALER (RoHS COMPLIANT) |

