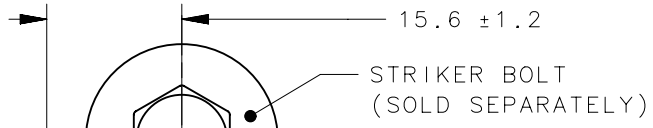
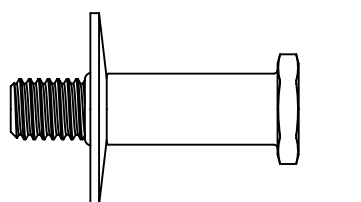
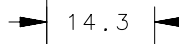


REVISION HISTORY			
REV	DATE	BY	DESCRIPTION
B	07MAY2014	DMS/YGC	PRN: P2014-0893

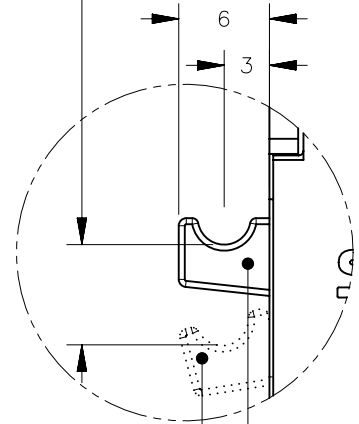
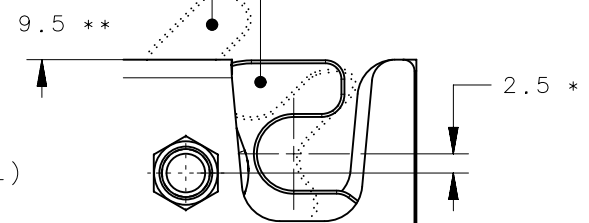


15.6 ± 1.2
STRIKER BOLT
(SOLD SEPARATELY)



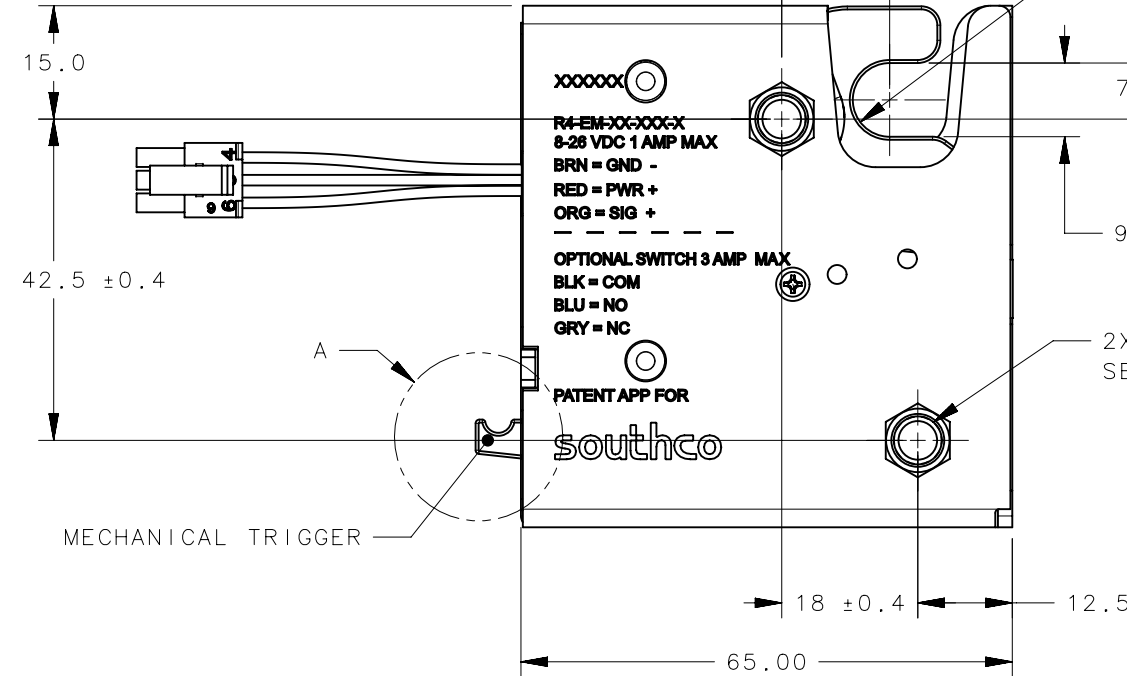
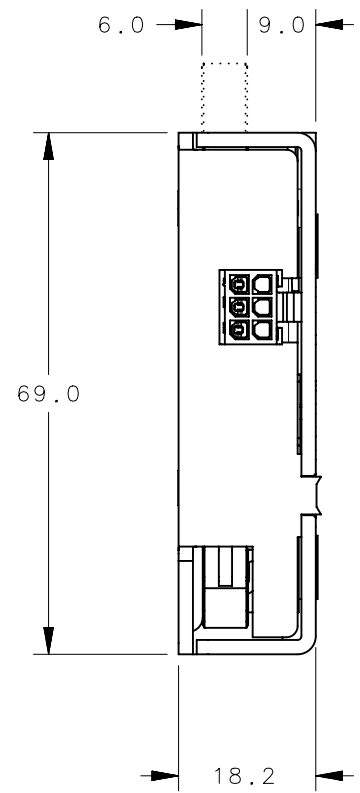
CAM POSITION (OPEN)**
CAM POSITION (CLOSED)*
SEE NOTE E

TRIGGER TRAVEL (7.8 REF)
KEEP CLEAR
SEE NOTE I



RELEASED POSITION
LATCHED POSITION

DETAIL A
SCALE 2:1



XXXXXX
R4-EM-99-161-X
6-28 VDC 1 AMP MAX
BRN = GND -
RED = PWR +
ORG = SIG +

OPTIONAL SWITCH 3 AMP MAX
BLK = COM
BLU = NO
GRY = NC

PATENT APP FOR
southco

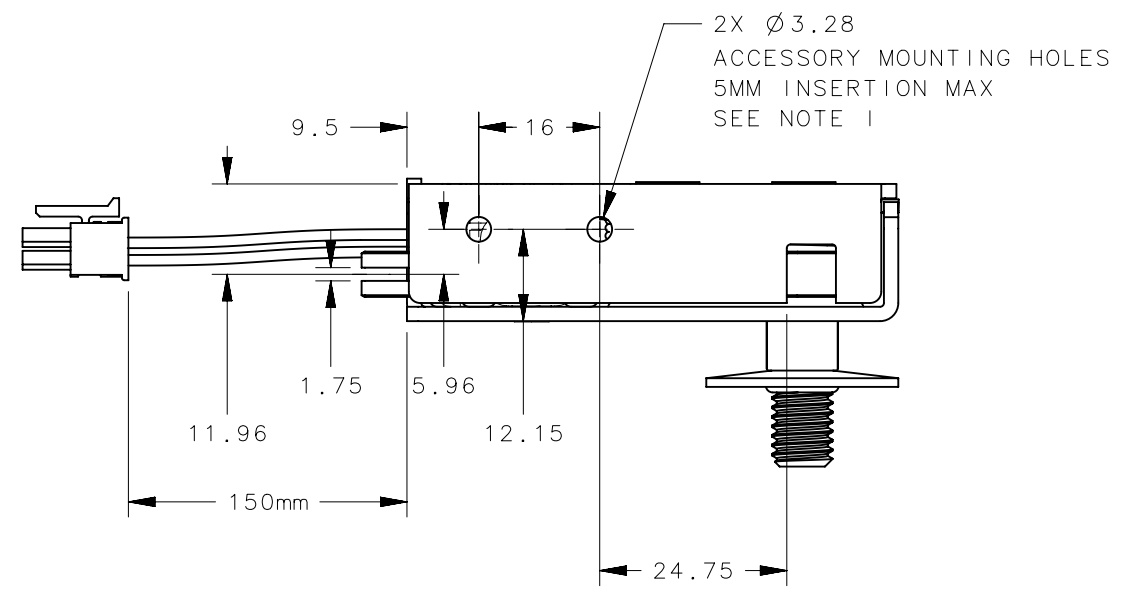
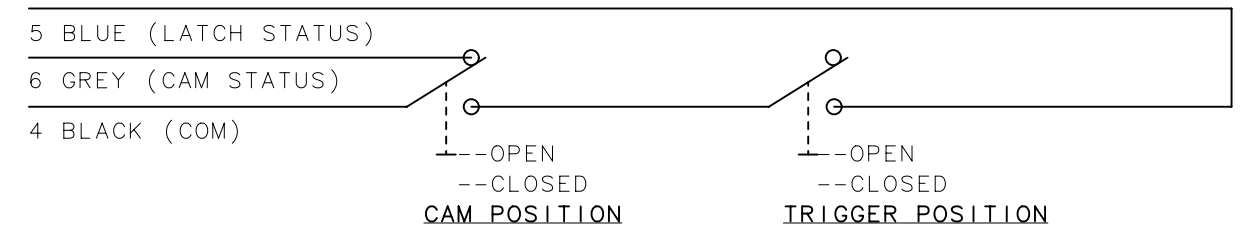
2X MOUNTING HOLES
SEE TABLE A

MECHANICAL TRIGGER

TABLE A	
PART NUMBER	MOUNTING CONFIGURATION
R4-EM-99-161	1/4-20 UNC THREAD
R4-EM-99-161-20	M6x1 THREAD
R4-EM-99-161-30	Ø 7.0 THRU HOLE

LATCH STATUS INDICATOR CIRCUIT CONDITIONS FOR BLACK AND BLUE WIRES	TRIGGER POSITION	CAM POSITION	
		(OPEN)	(CLOSED)
LOCKED		OPEN CIRCUIT	CLOSED CIRCUIT
UNLOCKED		OPEN CIRCUIT	OPEN CIRCUIT

CAM STATUS INDICATOR CIRCUIT CONDITIONS FOR BLACK AND GREY WIRES	CAM POSITION	
	CAM OPEN	CAM CLOSED
CLOSED CIRCUIT		OPEN CIRCUIT



2X Ø 3.28
ACCESSORY MOUNTING HOLES
5MM INSERTION MAX
SEE NOTE I

THIRD ANGLE PROJECTION	southco CONNECT · CREATE · INNOVATE	
MILLIMETERS [IN]		
TOLERANCES UNLESS OTHERWISE NOTED	DESCRIPTION R4-EM ASSEMBLY, DELAYED RELOCK, DUAL SWITCH, KICK OUT SPRING	
ALL DIMENSIONS WITHOUT TOLERANCES ARE FOR REFERENCE ONLY.	SIZE B	SYSTEM NX
PER ASME Y14.5M-1994	DWG NO. J-R4-EM-99-161	DATE 21AUG2013
PROPRIETARY ITEM EXCEPT FOR USES EXPRESSLY GRANTED IN WRITING, INFORMATION DISCLOSED HEREON IS CONFIDENTIAL AND ALL RIGHTS, PATENT AND OTHERWISE, ARE RESERVED BY SOUTHCO, INC.	SCALE 1:1	SHEET 1 OF 2

