

**southco**

PROPRIETARY ITEM. EXCEPT FOR USES EXPRESSLY GRANTED IN WRITING, INFORMATION DISCLOSED HEREON IS CONFIDENTIAL AND ALL RIGHTS, PATENT AND OTHERWISE ARE RESERVED BY SOUTHCO, INC.

LOCK PLUG  
PLAIN HEAD, ZINC BODY

DRAWING NUMBER  
J-PK-29

REV.	DATE	DRAWN	DESCRIPTION	PART NUMBER	MATERIAL	KEY CODE	KEYS
A	08NOV2005	AAB/MAJS	PRN: P2005-1592	PK-29-1X-YY-ZZZ	NOTE 2	SEE NOTE 5	SEE NOTE 1
B	19JAN2006	MAJS/RLR	PRN: P2006-0095	PK-41-1X-YY-ZZZ	NOTE 2	SEE NOTE 5	SEE NOTE 7
C	25JAN2008	MAJS/AMJ	PRN: P2008-0195				
D	26JAN2008	SLCR/MAJS	PRN: P2008-0171				
E	25JUN2012	SLCR/MAJS	PRN: P2012-0842				
F	18JAN2013	SLCR/MAJS	PRN: P2013-0116				

MILLIMETER DIMENSIONS  
DIMENSIONS WITHOUT TOLERANCES ARE FOR REFERENCE ONLY.

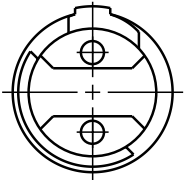
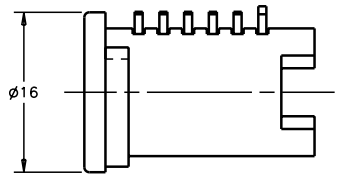
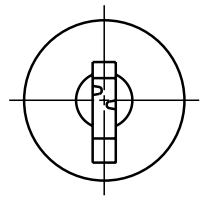
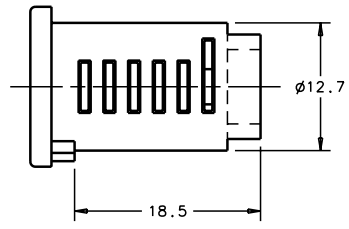
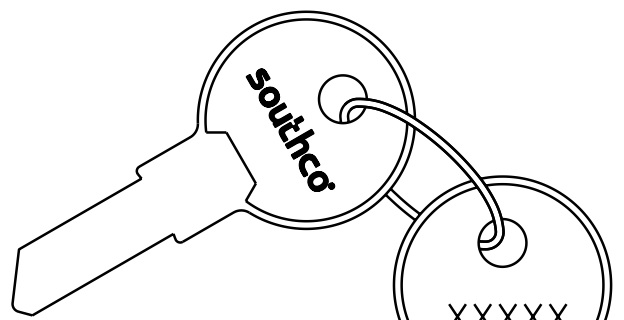
A3 PAPER SIZE  
THIRD ANGLE PROJECTION

DATE 08MAR2001  
DRAWN VNI  
CHKD  
SCALE 2:1

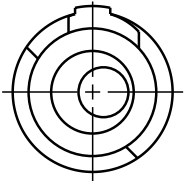
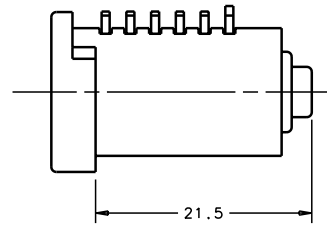
FINISH TABLE	
'X'	IN PART No. EQUALS
5	- BLACK POWDER COAT
6	- BRIGHT CHROME PLATED
9	- SATIN SILVER POLYESTER POWDER COAT
10	- SILVER METALIC URETHANE POWDER COAT
11	- CARDINAL WHITE POWDER COAT
13	- LIGHT GREY POWDER COAT
14	- FURNITURE WHITE POWDER COAT

NOTES:

- PART NUMBER COVERS LOCK PLUG COMPLETE WITH TWO KEYS LINKED TOGETHER. KEYS MAY BE INSTALLED IN LOCK PLUG OR PACKAGED BULK.
  - PLUG BODY TO BE DIE CAST ZINC. TUMBLERS TO BE BRASS. KEYS TO BE BRASS, NICKEL PLATED.
  - TRIVALENT CHROMATE FINISH ON PLUG BODY. HEAD IS POWDER COATED. COLOR IS PER THE FINISH TABLE.
  - KEY CODES LS001 - LS125 USE MASTER KEY, SOUTHCO PART NUMBER PK-24-01.
  - KEY CODE OPTIONS:  
ZZZ - KEY CODE  
 001 - LS001  
 002 - LS002  
 003 - LS003  
 ↓ ↓  
 050 - LS050  
 ↓ ↓  
 RS001 - RS001  
 ↓ ↓  
 RS050 - RS050  
 KD1010 - KEYED DIFFERENTLY, 10 DIFFERENT KEY CODES, RS001 - RS010, SOLD IN BAGS OF 10.  
 KD1050 - KEYED DIFFERENTLY, 50 DIFFERENT KEY CODES, RS001 - RS050, SOLD IN BAGS OF 50.  
 KD1125 - KEYED DIFFERENTLY, 125 DIFFERENT KEY CODES, RS001 - RS125, SOLD IN BAGS OF 125.  
 MK1010 - MASTER KEYED, KEYED DIFFERENTLY, 10 DIFFERENT KEY CODES, LS001 - LS010, SOLD IN BAGS OF 10.  
 MK1050 - MASTER KEYED, KEYED DIFFERENTLY, 50 DIFFERENT KEY CODES, LS001 - LS050, SOLD IN BAGS OF 50.  
 MK1125 - MASTER KEYED, KEYED DIFFERENTLY, 125 DIFFERENT KEY CODES, LS001 - LS125, SOLD IN BAGS OF 125.
6. YY IN PART NUMBER INDICATES END CONFIGURATION.
7. TO ORDER A LOCK PLUG ASSEMBLY WITHOUT KEYS, CHANGE \*PK-29\* TO \*PK-41\*. FOR EXAMPLE: PART NUMBER PK-41-16-13-ZZZ IS A PK-29-16-13-ZZZ ASSEMBLY WITHOUT KEYS INCLUDED.



YY = 13



YY = 06