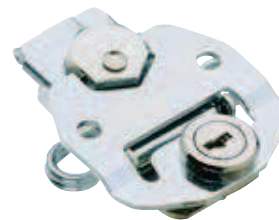
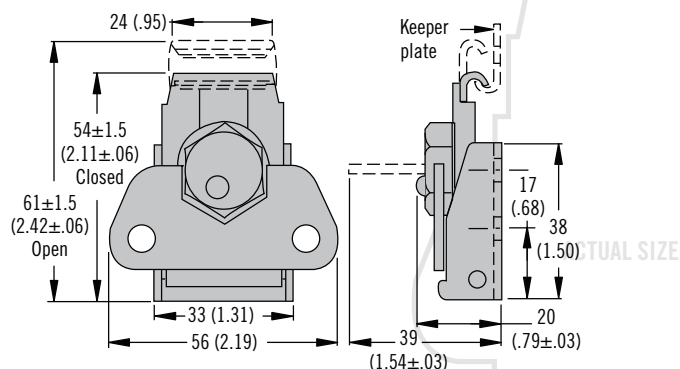


K4 Draw Latch

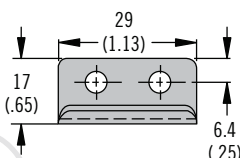
Rotary · Medium



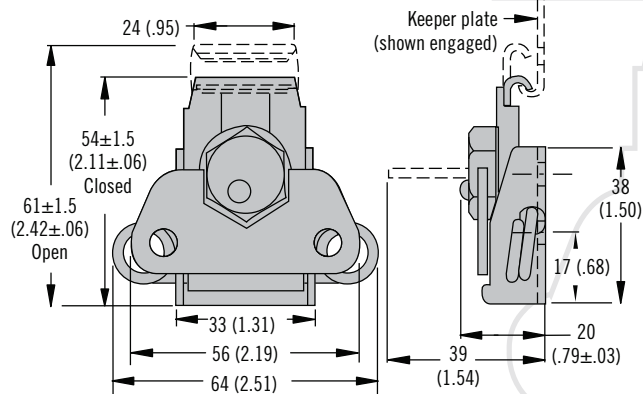
Riveted



Keeper

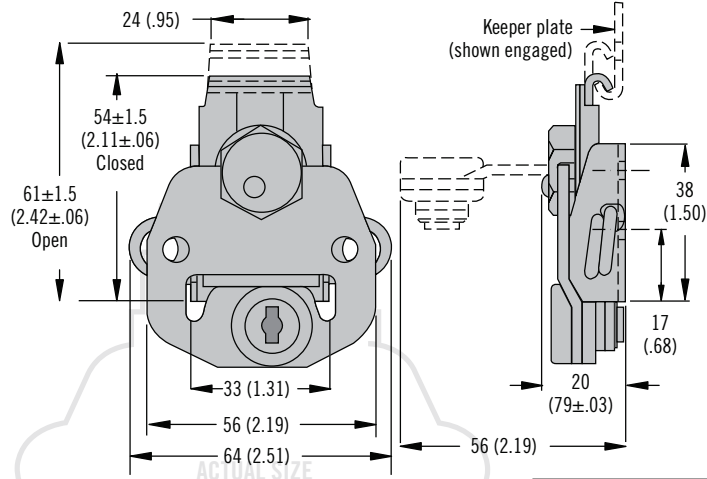


Spring Loaded

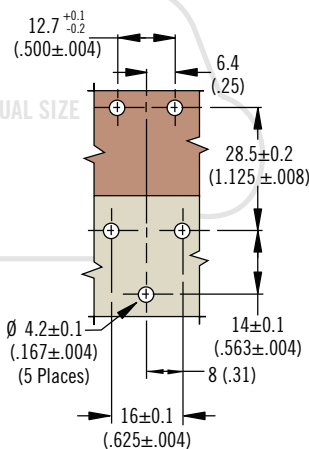


ACTUAL SIZE

Key Lockable



ACTUAL SIZE



- Lift and Turn operation
- Consistent pull-up

Material and Finish

Steel, zinc plated

Installation Notes

Install assembly with $\varnothing 4 (.157)$ rivets or M4 (No. 8) screws (not supplied)

Notes

Spring loaded:
Ideal for applications where shock and vibration occur. Compensates up to 4 (.156) for mounting hole irregularities, panel variations and gasket set.

Type	Part Number	
	Latch	Keeper
Riveted	K4-2714-07	K4-2338-07
Spring loaded	K4-2359-07	
Key lockable	K4-2833-07	

Part Number

See table

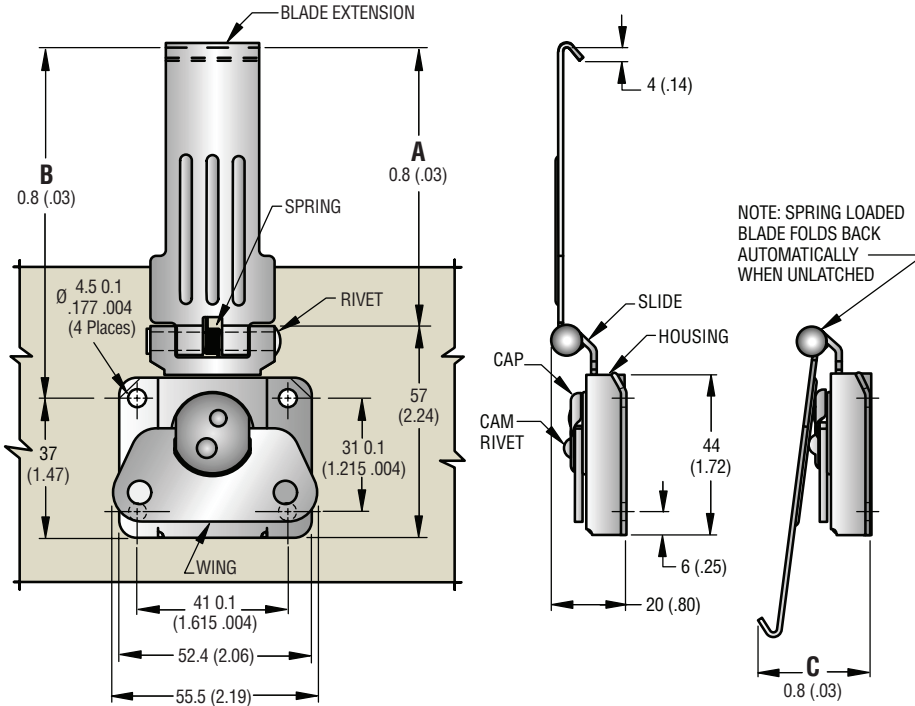
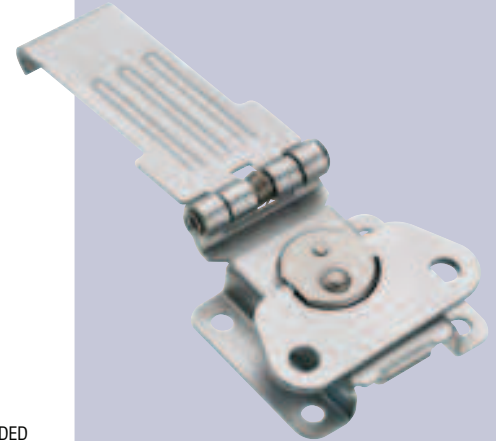
Order latch and keeper separately

Southco® Draw Latches

Link Lock Rotary Action Draw Latch, Medium Flat Cam Style

- Key-lockable, Small Wing or Large Wing Available
- Blade swings open when unlatched
- Accommodates off-plane latching

Small Wing

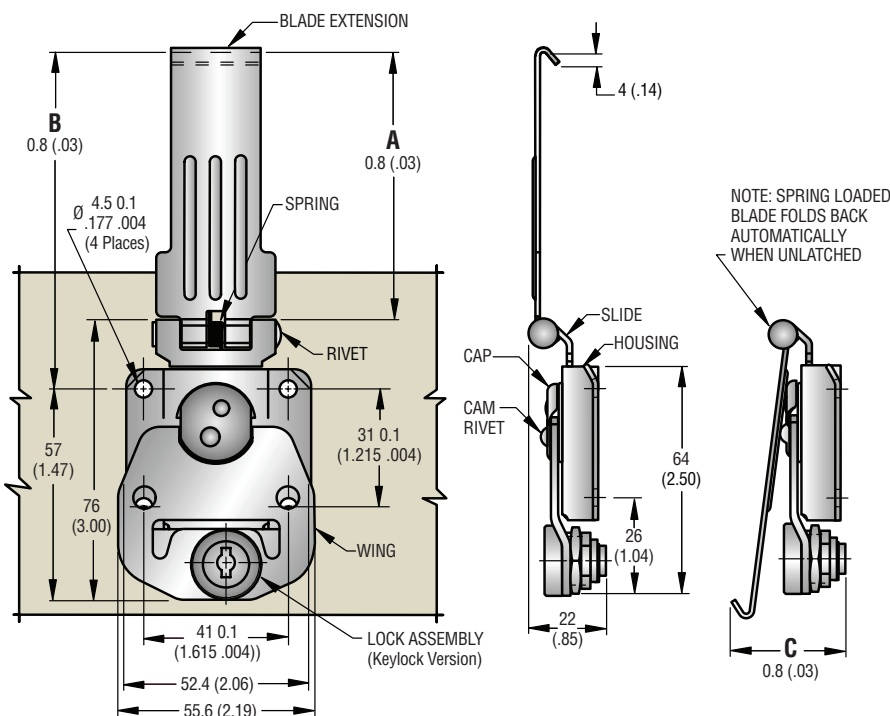


DIMENSIONS			PART NUMBERS
A	B	C	
49.7 (1.96)	69.6 (2.74)	25.6 (1.01)	K4-4004-07-1 •

Material and Finish

HOUSING, SLIDE and BLADE EXTENSION: 4130 Hardened steel, zinc plated plus bright chromate dip. RIVET: 1006 Steel, zinc plated plus bright chromate dip. SPRING and CAP: 302 Series stainless steel, natural. WING and LOWER CAM: 1020 Steel, zinc plated bright chromate dip. UPPER CAM: 304 Series stainless steel, natural. CAM RIVET: 300 Series stainless steel, natural.

Large Wing



DIMENSIONS			PART NUMBERS KEY LOCK VERSION
A	B	C	
66.3 (2.61)	85.3 (3.36)	30.2 (1.19)	K4-4024-07-3 •
69.3 (2.73)	89.1 (3.51)	30.7 (1.21)	K4-4024-07-4 •
72.6 (2.86)	92.2 (3.63)	31.5 (1.24)	K4-4024-07-5 •

Material and Finish

HOUSING, SLIDE and BLADE EXTENSION: 4130 Hardened steel, zinc plated plus bright chromate dip. RIVET: 1006 Steel, zinc plated plus bright chromate dip. SPRING and CAP: 302 Series stainless steel, natural. WING and LOWER CAM: 1020 Steel, zinc plated bright chromate dip. UPPER CAM: 304 Series stainless steel, natural. CAM RIVET: 300 Series stainless steel, natural. LOCK PLUG: Die cast zinc, bright chrome plated. PAWL: Low carbon steel, zinc plated plus chromate dip. MOUNTING NUT: Brass, natural. KEYS: Low carbon steel, chrome plated.

millimeter (inch)
millimeter
(inch)

Dimensions without tolerances are for reference only.

* S-2500 latches can be used with No. K3, No. K4 or No. K5 Keeper plates.