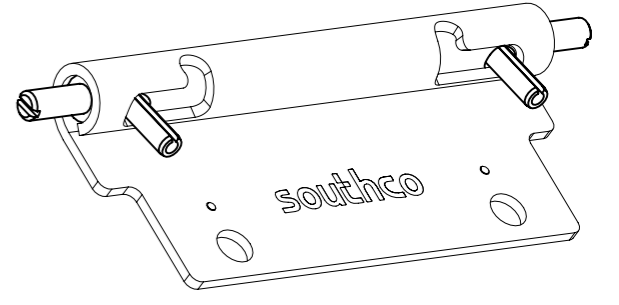
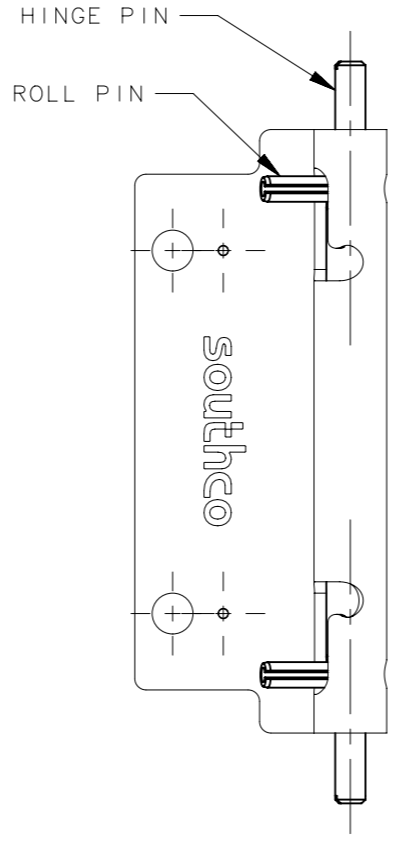
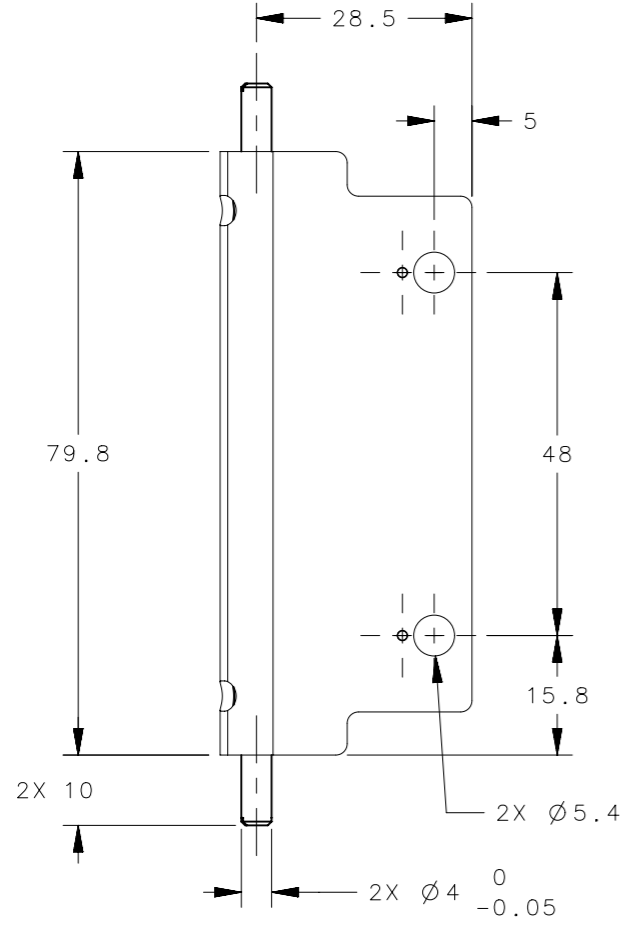
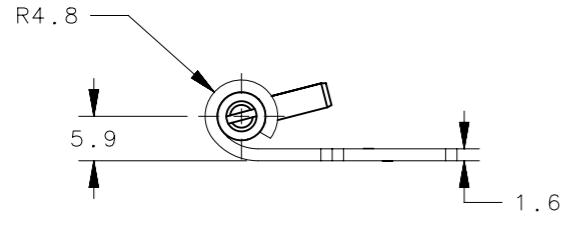
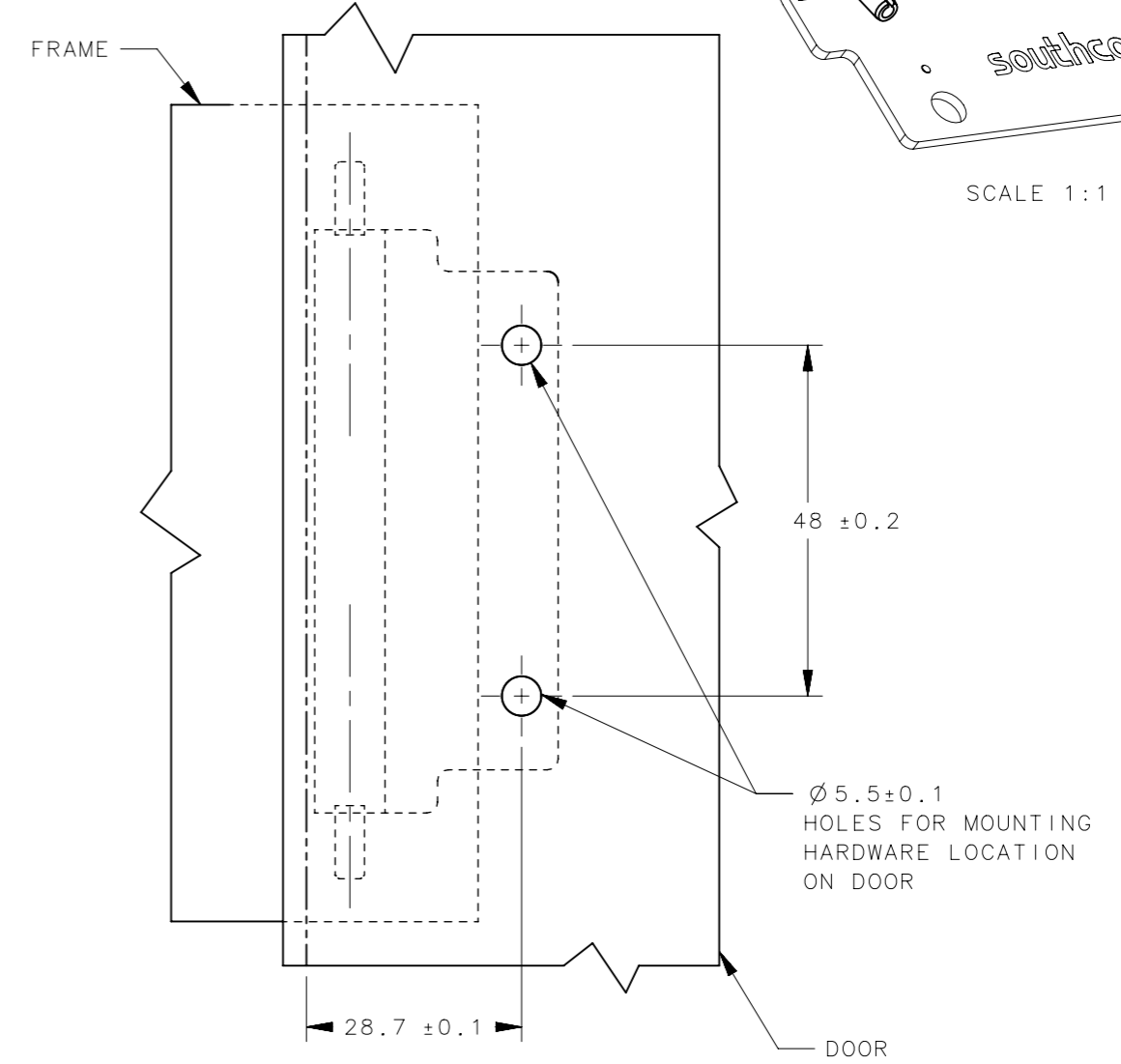


REVISION HISTORY			
REV	DATE	BY	DESCRIPTION
B	12DEC2019	CB1/VK	INITIAL RELEASE



SCALE 1:1



PANEL PREPARATION

- NOTES:
- TWO HINGES MINIMUM REQUIRED ON A DOOR.
 - HINGES MAY BE FASTENED TO LEAF BY:
 - M5 OR NO. 10 HARDWARE FOR MOUNTING LEAF, MACHINE SCREWS ARE RECOMMENDED HEX JAM NUTS MAY BE USED, BUT CLEARANCE WITH LEAF EDGE SHOULD BE VERIFIED.
 - WELDING.
 - SAME AS F6-940-1 EXCEPT MODIFIED HINGE PINS.

NO.	PART NUMBER	QTY	TYPE OF COMPONENT	MATERIAL	GENERAL NOTES
4	-	1	LEAF	STAINLESS STEEL	PASSIVATED
3	-	2	PIN	STAINLESS STEEL	PASSIVATED
2	-	2	PIN	STAINLESS STEEL	PASSIVATED
1	-	1	SPRING	STAINLESS STEEL	PASSIVATED
-	F6-99-302	-	ASSEMBLY	-	-

CPB NUMBER 2019-1039	THIRD ANGLE PROJECTION	 CONNECT • CREATE • INNOVATE		
SURFACE AREA	MILLIMETERS [IN]			
VOLUME	TOLERANCES UNLESS OTHERWISE NOTED	DESCRIPTION LEAF ASSEMBLY		
PROPRIETARY ITEM	ALL DIMENSIONS WITHOUT TOLERANCES ARE FOR REFERENCE ONLY.	SIZE A3	SYSTEM NX	DWG NO. J-F6-99-302
EXCEPT FOR USES EXPRESSLY GRANTED IN WRITING, INFORMATION DISCLOSED HEREON IS CONFIDENTIAL AND ALL RIGHTS, PATENT AND OTHERWISE, ARE RESERVED BY SOUTHCO, INC.	PER ASME Y14.5M-1994	DRAWN BY CB1/VK	DATE 26SEP2019	SCALE 1:1
				SHEET 1 OF 1