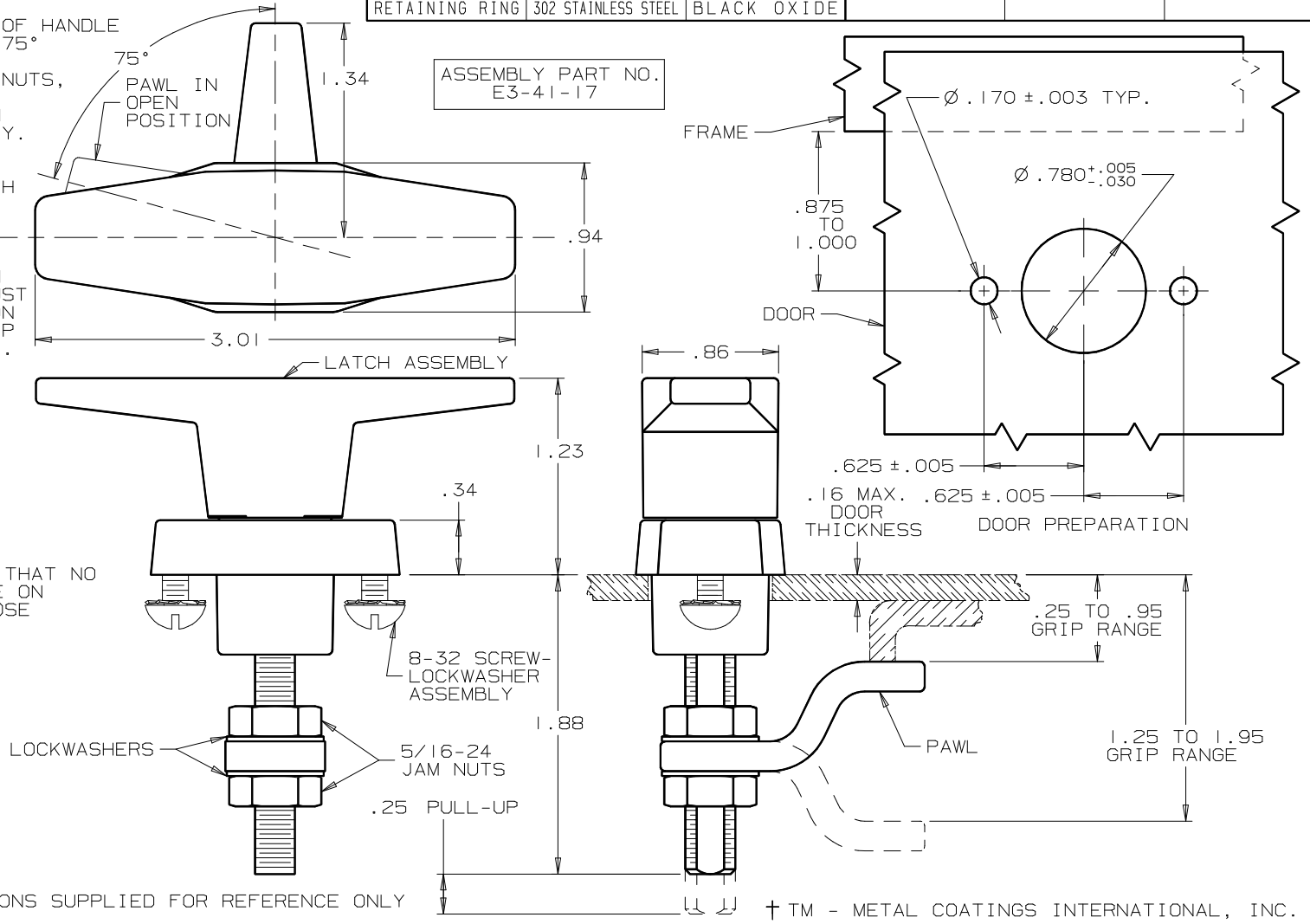


WISE-ACTION™ LATCH  
T-HANDLE OPERATION

| DATE    | DRAWN | CHKD | SCALE | DRAWING NUMBER |
|---------|-------|------|-------|----------------|
| 6/14/89 | RES   |      | 1:1   | J-E3-41-17     |

| REV. | DATE       | BY-CHKD | REVISIONS   | COMPONENT      | MATERIAL            | FINISH                             | COMPONENT          | MATERIAL         | FINISH                               |
|------|------------|---------|-------------|----------------|---------------------|------------------------------------|--------------------|------------------|--------------------------------------|
| A    | 12 JAN. 93 | KPL     | PRN: S-1-03 | HANDLE         | DIE CAST ZINC       | SATIN SILVER POLYESTER POWDER COAT | PIN                | 1008 STEEL       | ZINC PLATE PLUS CHROMATE DIP, YELLOW |
|      |            |         |             | HOUSING        | DIE CAST ZINC       | SATIN SILVER POLYESTER POWDER COAT | O-RING             | BUNA-N           | NATURAL                              |
|      |            |         |             | CAM            | 1075 STEEL          | DACROTIZED †                       | PAWL               | 1010 STEEL       | DACROTIZED †                         |
|      |            |         |             | SHAFT          | LOW CARBON STEEL    | DACROTIZED †                       | JAM NUT (2)        | LOW CARBON STEEL | DACROTIZED †                         |
|      |            |         |             | SPRING         | 302 STAINLESS STEEL | NATURAL                            | SCREW ASSEMBLY (2) | STEEL            | DACROTIZED †                         |
|      |            |         |             | SLEEVE         | 1075 STEEL          | DACROTIZED †                       | LOCKWASHER (2)     | SPRING STEEL     | DACROTIZED †                         |
|      |            |         |             | RETAINING RING | 302 STAINLESS STEEL | BLACK OXIDE                        |                    |                  |                                      |

- NOTES:
- OPERATION: 195° TURN OF HANDLE CAUSES PAWL TO ROTATE 75° THEN PULL UP .25".
  - SCREW ASSEMBLIES, JAM NUTS, PAWL AND LOCKWASHERS SHIPPED UNASSEMBLED IN BAG WITH LATCH ASSEMBLY.
  - INSTALLATION:
    - INSERT LATCH INTO HOLE IN DOOR, ATTACH USING SCREW ASSEMBLIES.
    - INSTALL JAM NUT, LOCKWASHER, PAWL, LOCKWASHER, AND JAM NUT ON SHAFT. ADJUST JAM NUTS TO POSITION PAWL AT CORRECT GRIP (WITH LATCH CLOSED). TIGHTEN JAM NUTS USING TWO 1/2" WRENCHES.



CAUTION: ADJUST PAWL SO THAT NO MORE THAN 30 in-lb TORQUE ON HANDLE IS REQUIRED TO CLOSE LATCH.

LATCH DIMENSIONS SUPPLIED FOR REFERENCE ONLY

FORMAT A 3/88