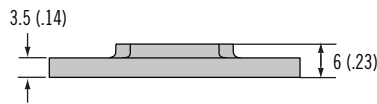
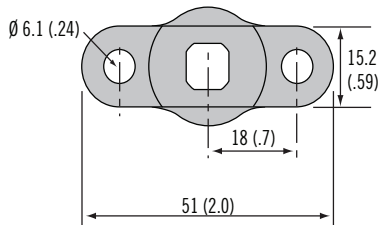


E5 Cam Latch Accessories

Multi-point actuators · Hooked cam



Multi-Point Actuator



Part Number	
A5-91-201-11	

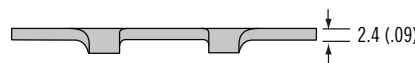
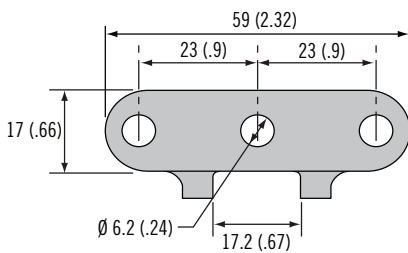
Material and Finish

Zinc alloy

Notes

2-Point Actuator plate (for multi-point see pages 264 - 265 for rods) (not recommended for key-locking)
Not to be used with low profile E5

Multi-Point Actuator - Low Profile



Part Number	
A8-4-01-03	

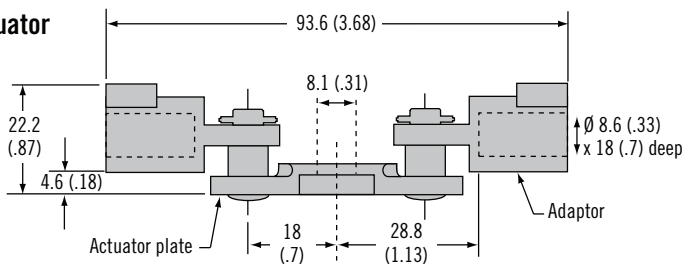
Material and Finish

Steel plated

Notes

Actuator plate (for multi-point see pages 264 - 265 for rods)
For use with all E5 latches

Multi-Point Actuator



Part Number	
A5-90-101-11	

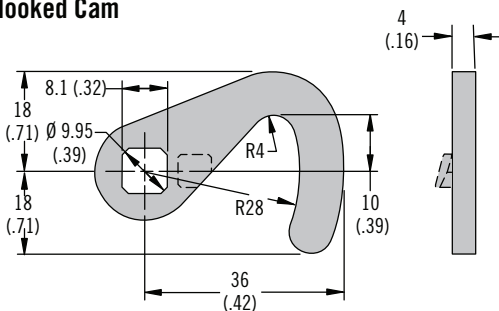
Material and Finish

Zinc alloy and steel, zinc plated

Notes

Actuator plate (for multi-point see pages 264 - 265 for rods)
Not to be used with low profile E5

Hooked Cam



Hooked Cam Part Number	
E5-6200	No stop
E5-6210	Stop for clockwise rotation
E5-6220	Stop for counter-clockwise rotation

Material and Finish

Steel plated

Notes

Not to be used with low profile E5



E5 Cam Latch Accessories

Sealing washer · Sealing cover

Material and Finish

Sealing washer: Neoprene natural

Sealing cover: Thermoplastic elastomer, black

Installation Notes

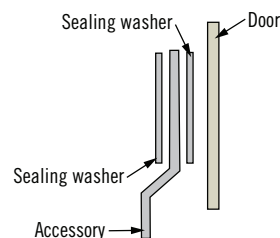
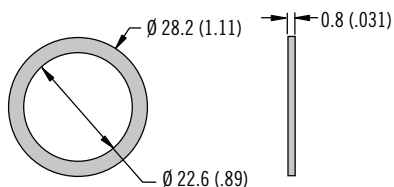
To provide sealing: use two sealing washers and add compressed thickness of each washer and accessory thickness to your door thickness range.

Notes

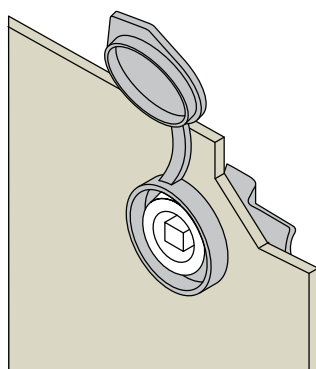
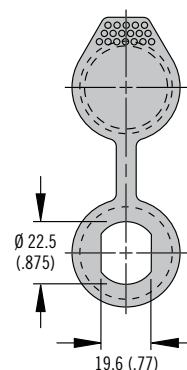
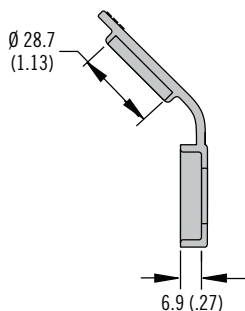
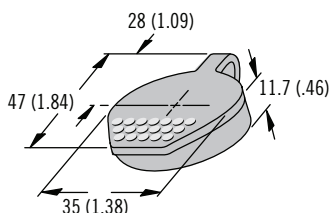
Sealing washer for use with all E5 products

Sealing cover for use with tool operated and cylinder lock E5 only

Sealing Washer



Sealing Cover



Part Number

See table

Type	Part Number	Adjustment Formula
Sealing washer	E5-17	Add 0.4 (0.02) compressed height to door thickness range
Sealing cover	90-3	Add 2.3 (.090) to door thickness range



www.southco.com

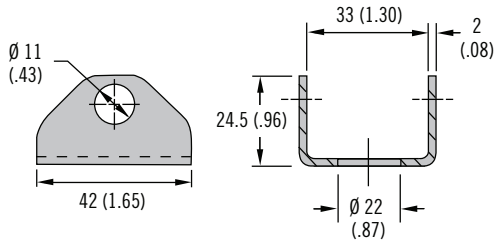
Dimensions in millimeters (inch) unless otherwise stated

E5 Cam Latch Accessories

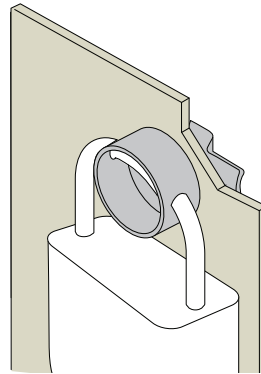
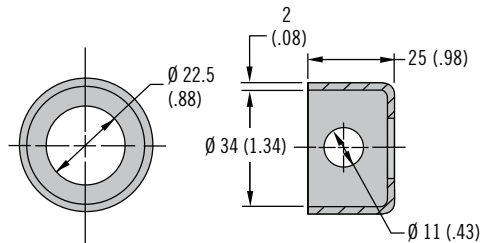
Padlock bracket · Pull tab



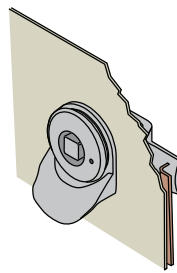
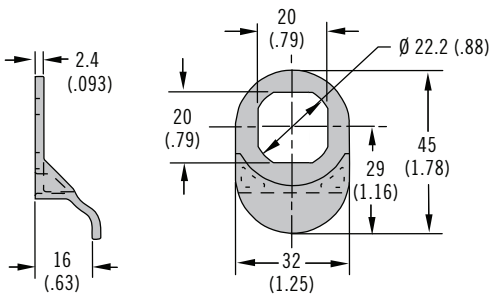
Padlock Bracket (Square)



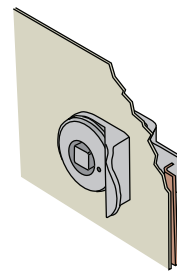
Padlock Bracket (Round)



Pull Tab



Shown perpendicular to latch and cam



Shown in-line with latch and cam

Material and Finish

Padlock bracket: Stainless steel, black powder coated

Pull tab: Nylon, black

Installation Notes

To provide sealing: use two sealing washers and add compressed thickness of each washer and accessory thickness to your door thickness range.

Notes

Padlock brackets and pull tabs for use with tool operated and cylinder lock E5 only

Type	Part Number	Adjustment Formula
Padlock bracket square	E3-77-101-31	Add 2 (.08) to door thickness range
Padlock bracket round	E3-77-102-31	Add 2 (.08) to door thickness range
Pull tab	E5-18	Add 2.4 (.093) to door thickness range

Part Number

See table