



# E5 Cam Latch

Zinc · Shutter · Tool operated · Fixed grip

- Single hole install
- Latched / unlatched detent
- Vibration resistant
- EN 61373 Compliant

### Material and Finish

Zinc alloy, powder coated or chrome plated and steel, zinc plated

### Performance Details

Maximum static load: 330 N (74 lbf)

### Installation Notes

Mounting nut maximum tightening torque: 10 N·m (88 in·lbf)

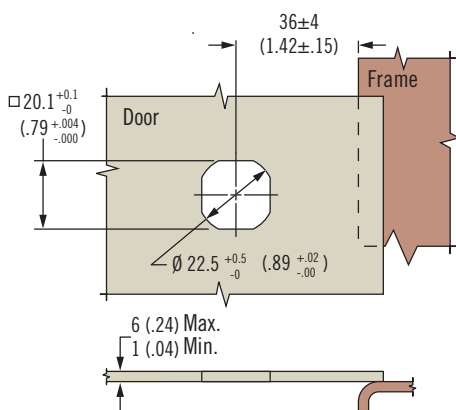
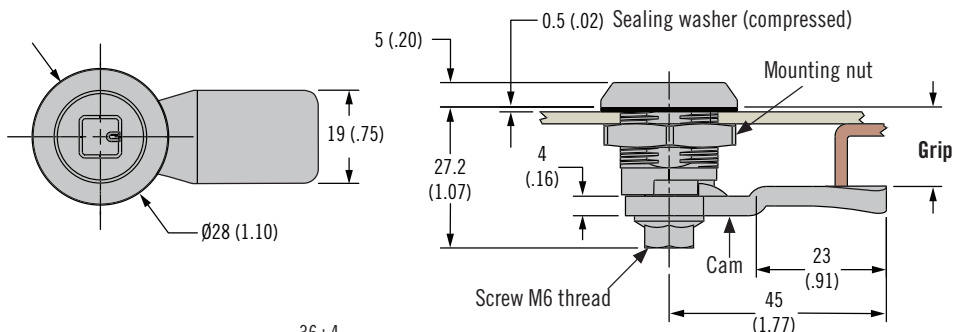
Screw Maximum tightening torque: 5 N·m (45 in·lbf)

### Sealing Notes

NEMA 4 / IP65 achieved using gasket supplied

### Keys and Accessories

See page 130



Insert key to depress shutter and rotate cam

### H Head Styles

-   
7 (.28)  
Triangle
-   
8 (.32)  
Triangle
-   
7 (.28)  
Square
-   
8 (.32)  
Square
-   
Bellcore  
216

### Part Number Selection

See table

Order latch and cam separately

### Latch Part Number (no cam)

**E5 - 8 - H F - UU1**

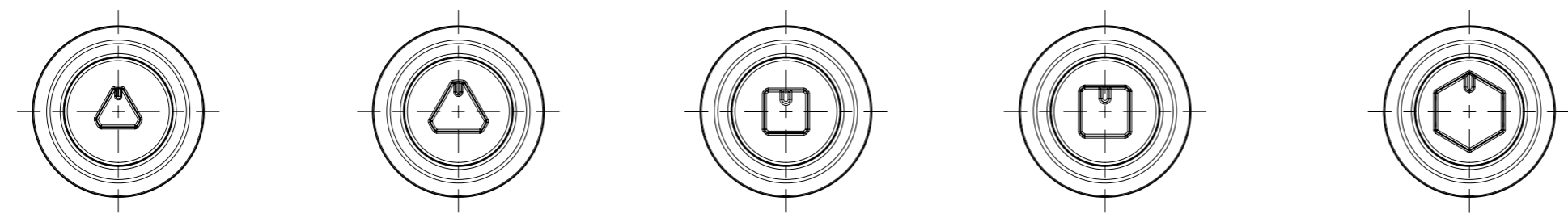
- F Finish**
- 2 Bright chrome
  - 5 Black powder coated

- H Head style**
- 02 7 (.28) Triangle
  - 03 8 (.32) Triangle
  - 04 7 (.28) Square
  - 05 8 (.32) Square
  - 13 Bellcore 216

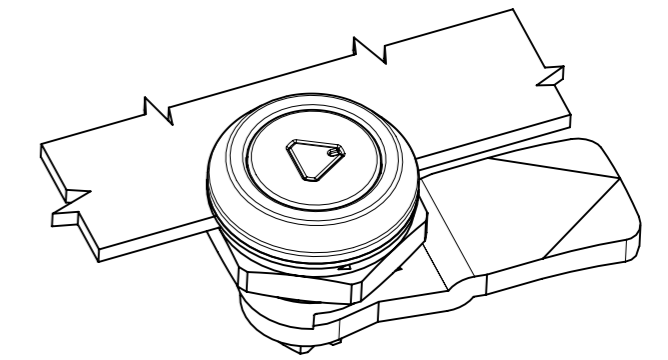
Cam Part Number Table (order separately from latch)							
Grip	Part Number	Grip	Part Number	Grip	Part Number	Grip	Part Number
4 (.16)	E5-6003	14 (.55)	E5-6008	24 (.94)	E5-6013	34 (1.34)	E5-6018
6 (.24)	E5-6004	16 (.63)	E5-6009	26 (1.02)	E5-6014	36 (1.42)	E5-6019
8 (.31)	E5-6005	18 (.71)	E5-6010	28 (1.10)	E5-6015	38 (1.50)	E5-6020
10 (.39)	E5-6006	20 (.79)	E5-6011	30 (1.18)	E5-6016	40 (1.57)	E5-6021
12 (.47)	E5-6007	22 (.87)	E5-6012	32 (1.25)	E5-6017	42 (1.65)	E5-6022

REVISION HISTORY			
REV	DATE	BY	DESCRIPTION
D	25OCT2016	CJ/JQ	PRN: P2016-2430

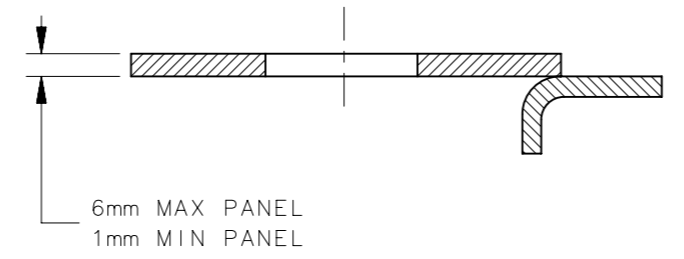
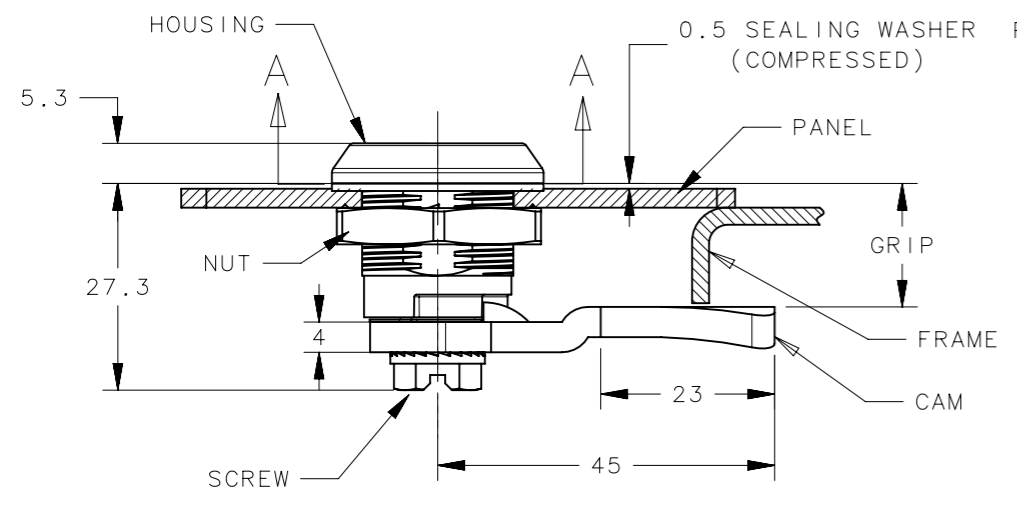
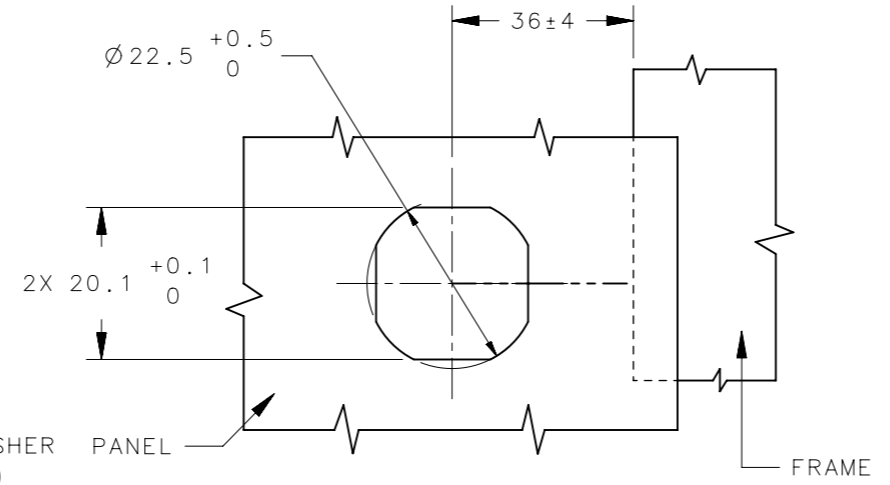
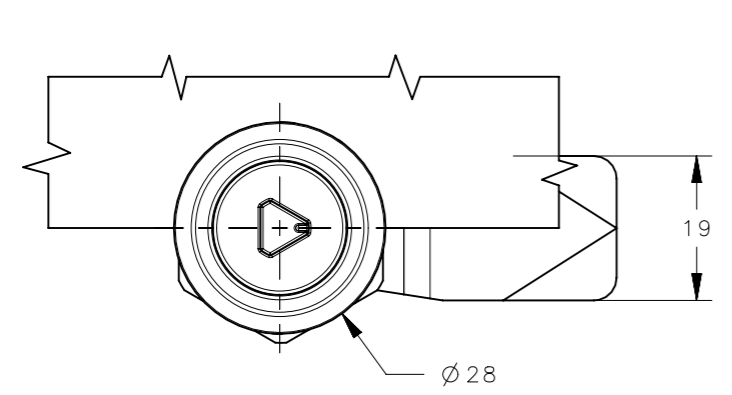
HEAD STYLE (WW)



TRIANGLE 7mm WW=02      TRIANGLE 8mm WW=03      SQUARE 7mm WW=04      SQUARE 8mm WW=05      BELLCORE 216 WW=13



INSTALLATION



PANEL PREPARATION

NOTES:

- MATERIAL AND FINISH:  
 HOUSING: DIE CASTING ZINC, CHROME PLATED OR BLACK PC  
 DRIVER STUD: DIE CASTING ZINC, CHROME PLATED OR BLACK PC  
 SLIDE BUSHING: DIE CASTING ZINC, CHROME PLATED OR BLACK PC  
 STATIONARY BUSHING: DIE CASTING ZINC, PASSIVATED  
 MOUNTING NUT: DIE CASTING ZINC, ZINC PLATED  
 MOUNTING SCREW: LOW CARBON STEEL, ZINC PLATED, 3M PATCH.  
 SPRING: 300 SERIES STAINLESS STEEL, PASSIVATED  
 STOP WASHER: 300 SERIES STAINLESS STEEL, PASSIVATED  
 O-RING: NITRILE, BLACK  
 SEALING WASHER: POLYURETHANE, BLACK
- COSMETIC SPECIFICATION: ALL SURFACES ABOVE A-A CONFIRM TO CLASS B PER SOUTHCO COSMETIC SPEC S-121. OTHERS WILL CONFIRM TO CLASS D.
- USE CAM E5-60YY WHICH CAN BE ORDERED SEPERATELY.

INSTALLATION METHOD

- PLACE SEALING WASHER ONTO LATCH HOUSING AND PLACE THROUGH MOUNTING HOLE.
- INSTALL MOUNTING NUT AND TIGHTEN TO 10 N.m MAX.
- ATTACH CAM TO LATCH ASSEMBLY. ASSURE THAT CAM INDICATION POINTS TO CAM LOCATION.
- INSTALL SCREW AND TIGHTEN TO 5 N.m MAX.

USE CAM E5-60YY (ORDER SEPARATELY)

GRIP (mm)	4	6	8	10	12	14	16	18	20	22	24	26	28	30	32	34	36	38	40	42
YY	03	04	05	06	07	08	09	10	11	12	13	14	15	16	17	18	19	20	21	22

WW: SEE ABOVE HEAD STYLE  
 X: -2 CHROME PLATED  
 -5 BLACK POWDER COATED

E5-8-WWX-UU1	ASSEMBLY	SEE NOTES	SEE NOTES
PART NUMBER	TYPE OF COMPONENT	MATERIAL	FINISH

THIRD ANGLE PROJECTION						
MILLIMETERS [IN]		DESCRIPTION				
SURFACE AREA mm <sup>2</sup>		CAM LATCH				
VOLUME mm <sup>3</sup>		ALL DIMENSIONS WITHOUT TOLERANCES ARE FOR REFERENCE ONLY.				
PROPRIETARY ITEM		SIZE	SYSTEM	DWG NO.		
EXCEPT FOR USES EXPRESSLY GRANTED IN WRITING, INFORMATION DISCLOSED HEREON IS CONFIDENTIAL AND ALL RIGHTS, PATENT AND OTHERWISE, ARE RESERVED BY SOUTHCO, INC.		A3	NX	J-E5-8		
PER ASME Y14.5M-1994		DRAWN BY	DATE	SCALE	SHEET	
		CJ/JQ	30JUL2015	1:1	1 OF 1	