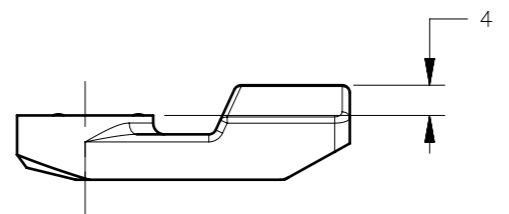
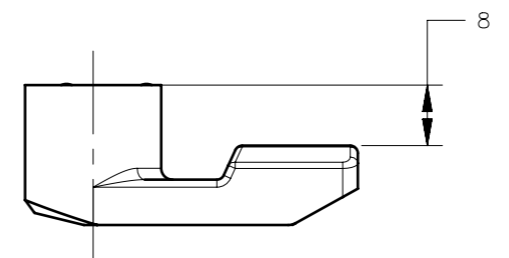


REVISION HISTORY			
REV	DATE	BY	DESCRIPTION
A	07NOV2018	CAB/EI	PRN: P2018-2573

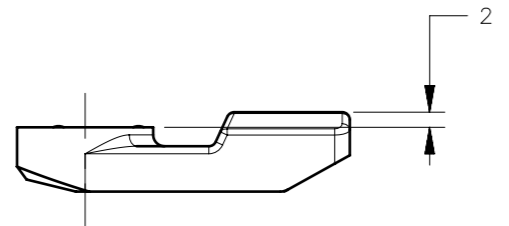
PART NUMBER: E5-3516  
YY=16



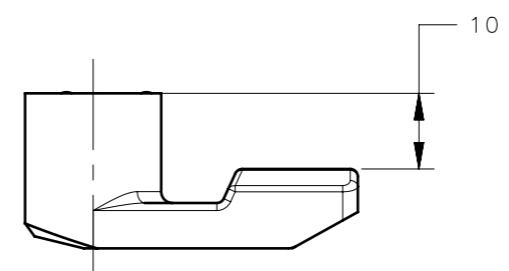
PART NUMBER: E5-3528  
YY=28



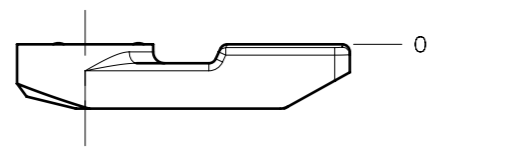
PART NUMBER: E5-3518  
YY=18



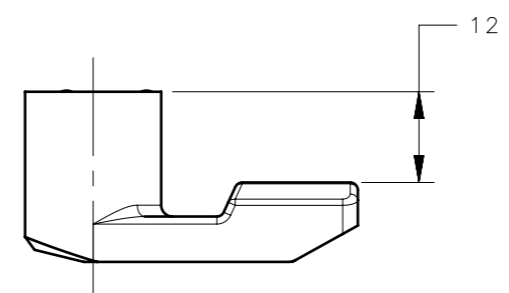
PART NUMBER: E5-3530  
YY=30



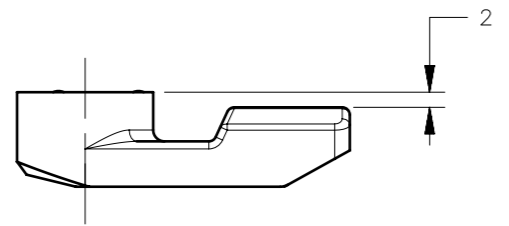
PART NUMBER: E5-3520  
YY=20



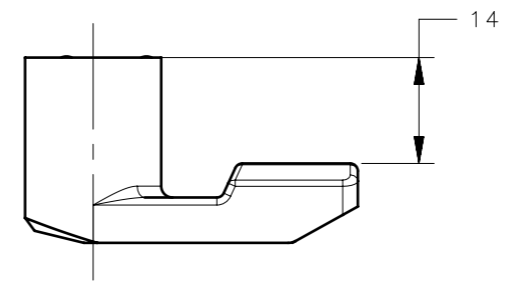
PART NUMBER: E5-3532  
YY=32



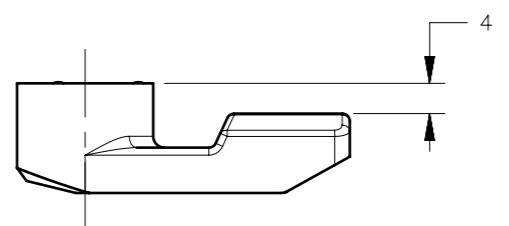
PART NUMBER: E5-3522  
YY=22



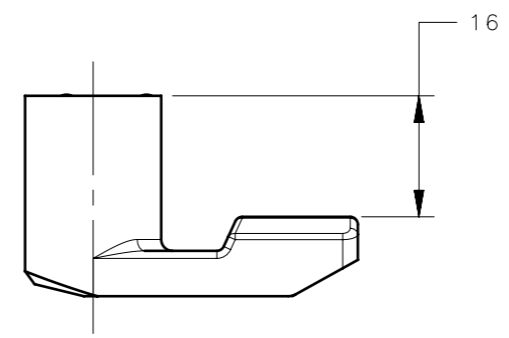
PART NUMBER: E5-3534  
YY=34



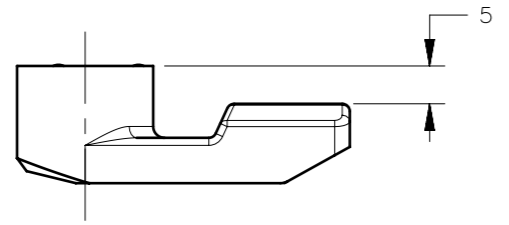
PART NUMBER: E5-3524  
YY=24



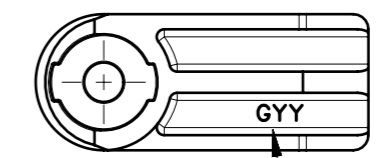
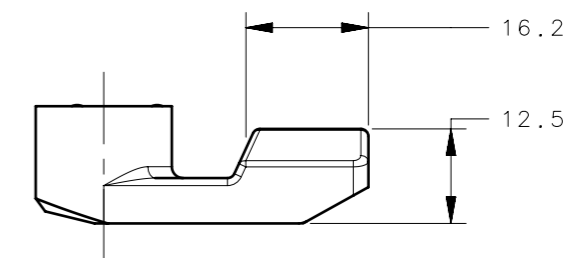
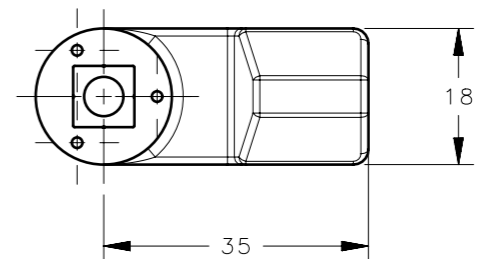
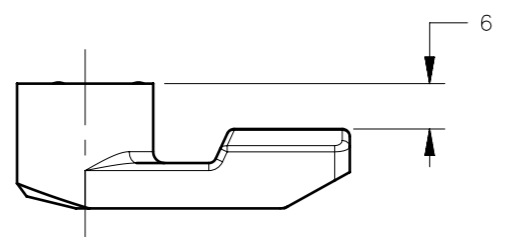
PART NUMBER: E5-3536  
YY=36



PART NUMBER: E5-3525  
YY=25



PART NUMBER: E5-3526  
YY=26



"YY"=TWO LAST DIGITS OF PART NUMBER  
CORRESPONDENT TO LATCH GRIP  
WHEN ASSEMBLED.

E5-35YY		CAM	GLASS FILLED NYLON	BLACK COLOR
PART NUMBER		TYPE OF COMPONENT	MATERIAL	FINISH
THIRD ANGLE PROJECTION				
MILLIMETERS [IN]				
TOLERANCES UNLESS OTHERWISE NOTED		DESCRIPTION		
ALL DIMENSIONS WITHOUT TOLERANCES ARE FOR REFERENCE ONLY.		PLASTIC CAM		
PROPRIETARY ITEM		SIZE	SYSTEM	DWG NO.
EXCEPT FOR USES EXPRESSLY GRANTED IN WRITING, INFORMATION DISCLOSED HEREON IS CONFIDENTIAL AND ALL RIGHTS, PATENT AND OTHERWISE, ARE RESERVED BY SOUTHCO, INC.		A3	NX	J-E5-35
PER ASME Y14.5M-1994		DRAWN BY	DATE	SCALE
		CAB/EI	06NOV2018	1:1
		SHEET		1 OF 1