



E3 VISE ACTION® Compression Latch Accessories

Keys

Material and Finish

Steel, zinc plated

Part Number

Steel tubular key (order separately)

Small E3 latches: E3-26-819-15

Large E3 latches: E3-5-15

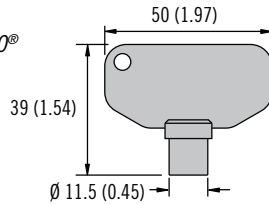
Material and Finish

Zinc alloy or nylon

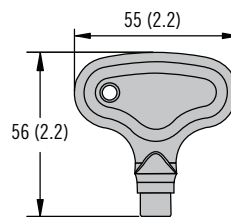
Keys - Steel

For latches with *SOUTHCO*®

Tubular key head styles



Keys - Zinc or Nylon



- H** Head style
- 2 3 (.11) Double bit
 - 3 7 (.28) Triangle
 - 4 7 (.28) Square
 - 7 8 (.32) Triangle
 - 8 8 (.32) Square recess
 - 9 5 (.19) Double bit (nylon only)
 - 10 8 (.32) Square male (zinc only)
 - 11 Bellcore electronics
 - 12 Bellcore 216 (zinc only)
 - 24 6 (.24) Square recess (nylon only)

- F** Finish
- 1 Plated zinc
 - 2 Natural zinc
 - 3 Nylon black

E3 - **H** - **F**

Key Styles

- 2 3 (.11) Double bit
- 3 7 (.28) Triangle
- 4 7 (.28) Square
- 7 8 (.32) Triangle
- 8 8 (.32) Square recess
- 9 5 (.19) Double bit
- 10 8 (.32) Square male
- 11 Bellcore electronics
- 12 Bellcore 216
- 24 6 (.24) Square recess

Part Number

Overmolded key CH751:

Single: PK-10-10-05

Pair: PK-10-01-05

Overmolded key R001:

Single: PK-10-10-05-KR001

Pair: PK-10-01-05-KR001

Flat key

Pair: PK-10-01

Overmolded Keys

Key CH751

Key R001

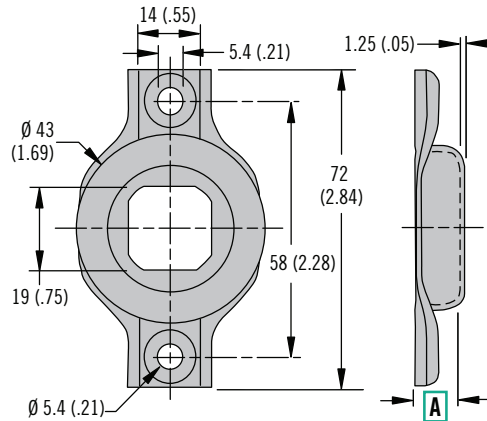
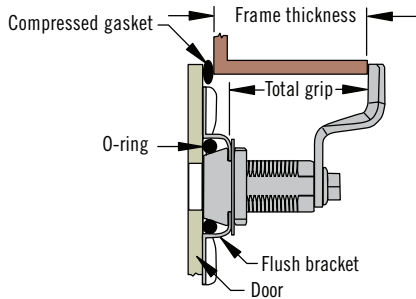


Flat Keys

Key CH751

E3 VISE ACTION® Compression Latch Accessories

Fixed bracket for flush mounting



A	Part Number	Material
6.6	E3-77-251-12	Galvanized steel
*9.3	E3-77-252-12	Galvanized steel
6.6	E3-77-251-24	304 Stainless steel
*9.3	E3-77-252-24	304 Stainless steel

* For use with Railway standard or Bellcore 216 style only

To calculate the **Total Grip**, use the following formula:
Frame Thickness + Compressed Gasket - A.
 Use this **Total Grip** with the appropriate E3 tables in the *SOUTHCO® Handbook* to determine cam type.

Material and Finish

Stainless steel or galvanized steel with rubber o-ring

Sealing Notes

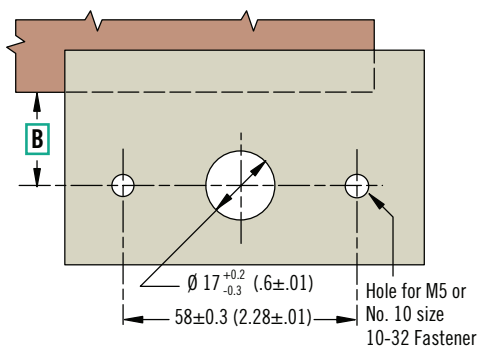
Environmental sealing is achieved by using latch with flange gasket (optional or included with latch see pages 40 -55) and sealing the mounting screw threads.

Notes

For use with large single hole mount tool operated E3 VISE ACTION® compression latches, see pages 40 - 43, 46 - 47 and 50 - 51

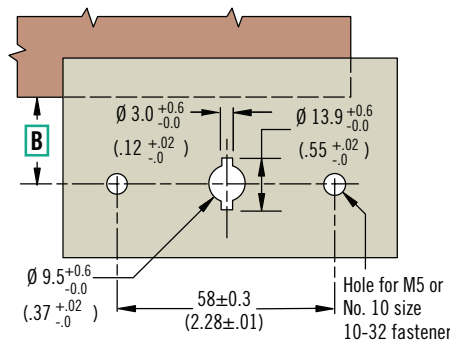
Door preparation

For **B** dimensions:
 Large adjustable grip 24 ± 1.5 (.94 ± .06)
 Fixed grip 36 ± 4 (1.42 ± .15)

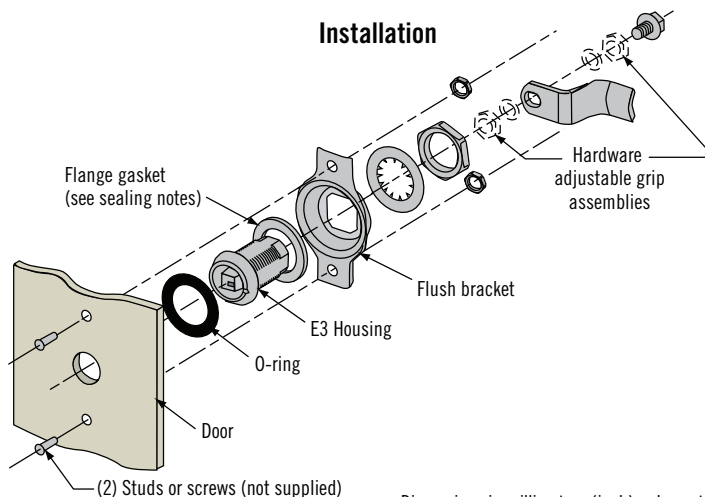


Double bit (key retained style)

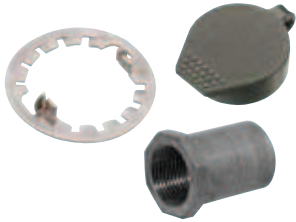
Key can only be removed in the latch closed position.



Installation



Dimensions in millimeters (inch) unless otherwise stated



E3 VISE ACTION® Compression Latch Accessories

Sealing & spur washers · Sealing covers · Sleeve nut

Material and Finish

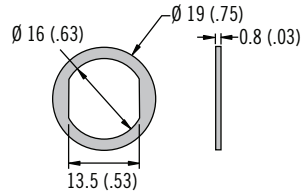
Sealing washers: Neoprene, natural
 Spur washer: Steel, zinc plated
 Sealing cover: Thermoplastic elastomer, black

Notes

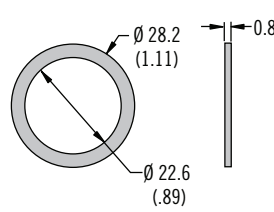
Spur washer provides for round hole installation in wood and similar materials of low density
 Sealing cover cannot be used with Railway standard or Bellcore 216 styles

Sealing Washers

Small

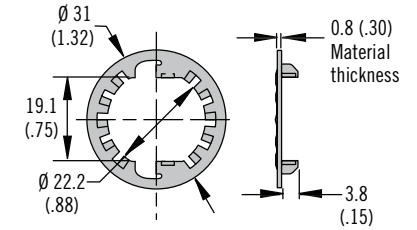


Large

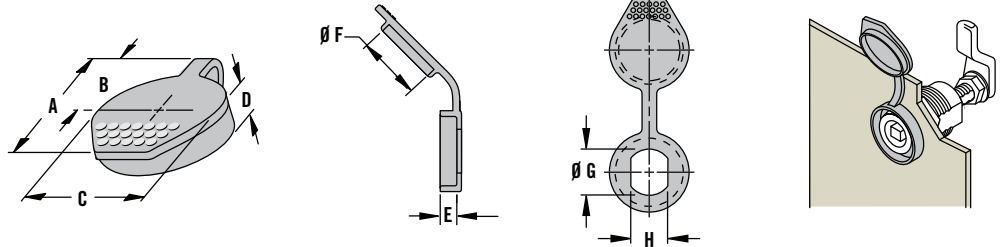


Spur Washer

Large



Sealing Cover



Latch Installation Hole Size		Dimensions					
∅ G	Distance across flat H	A	B	∅ C	D	E	∅ F
16 (.63)	13.5 (.53)	40 (1.58)	20 (.85)	29 (1.13)	10.5 (.42)	6.1 (.24)	22.3 (.88)
22.5 (.88)	19.6 (.77)	47 (1.84)	28 (1.09)	35 (1.38)	11.7 (.46)	6.9 (.27)	28.7 (1.13)

Part Number

See table

Type	Part Number	Adjustment Formula
Sealing washer small	E3-0-30268-02	Add 0.4 (.02) to door thickness
Sealing washer large	E5-17	Add 0.4 (.02) to door thickness
Spur washer large	90-6-875	Add 0.8 (.03) to door thickness
Sealing cover small	90-1	Add 2.3 (.09) to door thickness
Sealing cover large	90-3	Add 2.3 (.09) to door thickness

Material and Finish

Zinc alloy

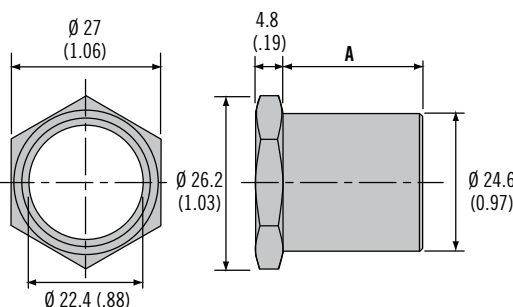
Installation Notes

For use in double skin doors.
 Produce standard panel cutout in outer door and for the inner door produce 25 (.98) hole for sleeve nut.

Part Number

See table

Sleeve Nut M22 Thread (for large E3 only)



A	Part Number
12.7 (.50)	E3-34-263-36
25 (.98)	E3-34-264-36

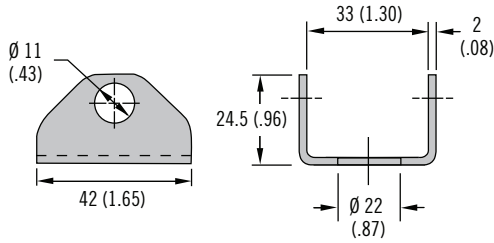
Dimensions in millimeters (inch) unless otherwise stated

E3 VISE ACTION® Compression Latch Accessories

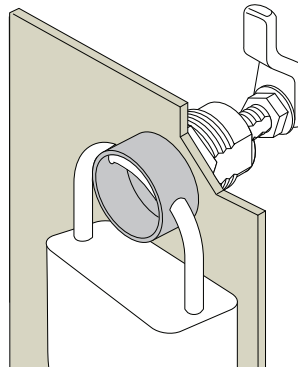
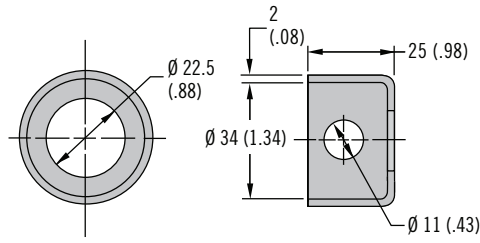
Padlock brackets · Finger pulls



Padlock Bracket (Square)



Padlock Bracket (Round)



Material and Finish

Padlock bracket: Stainless steel, black powder coated
 Pull tab: Nylon, black

Sealing Notes

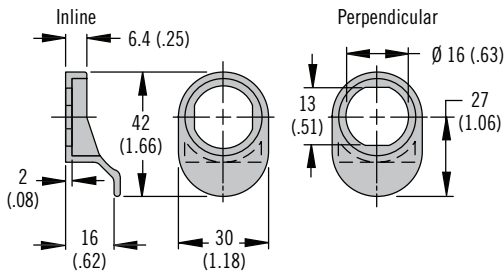
To provide sealing use two flange gaskets and add compressed thickness of each flange gasket and bracket thickness to your door thickness.

Notes

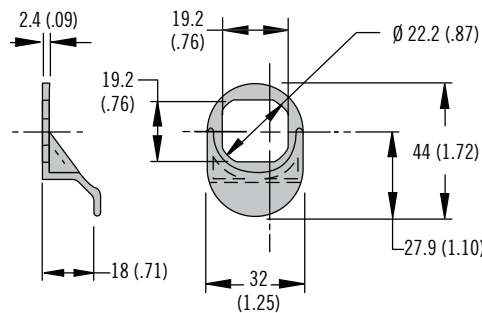
Padlock bracket: For large size single hole mount tool operated only

Only unassembled styles can be used with round padlock bracket

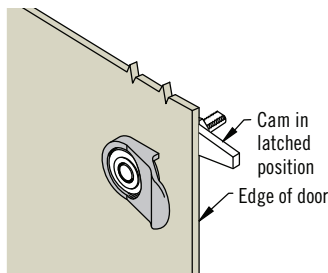
Pull Tab (Small)



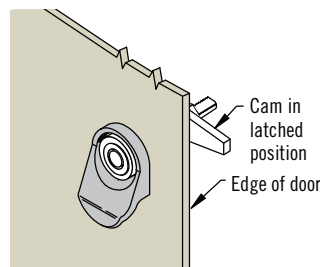
Pull Tab (Large)



Pull tab in-line with cam



Pull tab perpendicular to cam



Type	Part Number	Adjustment Formula
Padlock bracket square	E3-77-101-31	Add 2 (.08) to door thickness
Padlock bracket round	E3-77-102-31	Add 2 (.08) to door thickness
Pull tab small - In-line	E3-27-61	Add 2 (.08) to door thickness
Pull tab small - Perpendicular	E3-27-62	Add 2 (.08) to door thickness
Pull tab large	E3-27-1	Add 2.4 (.09) to door thickness

Part Number

See table