



# E3 VISE ACTION® Compression Latch

Stainless steel housing · Tool or hand operated  
Fixed or adjustable grip · 19.1mm size

- Consistent pre-set compression
- Available premium finish
- Corrosion resistance
- Tool operated for security
- EN 4545-3 E60 Compliant

### Material and Finish

Stainless steel 304 and 316

### Performance Details

Compression: 6.4 mm (.25 in)  
Maximum static load:  
Adjustable Grip: 556 N (125 lbf)  
Fixed Grip: 450 N (100 lbf)

### Sealing Notes

NEMA 4 and IP65 enabled by using supplied flange gasket

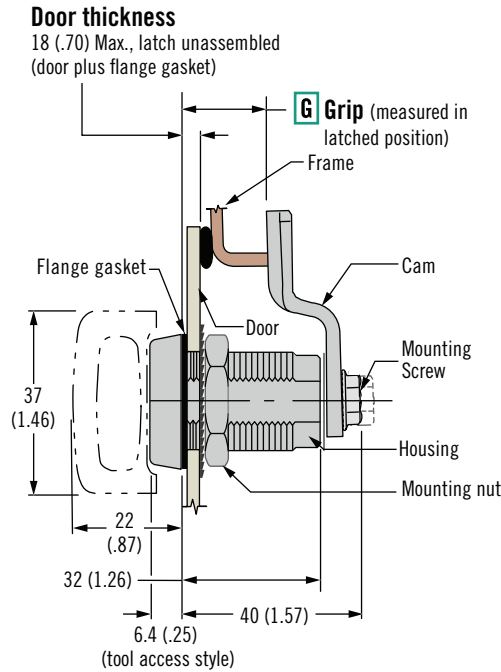
### Installation Notes

Recommended tightening torque for the mounting nut is 20 N·m (176 in·lbf).  
Adjustable Grip: Position cam so latching function can be achieved comfortably by hand.  
Fixed Grip: Mounting screw torque 10 N·m (88 in·lbf)

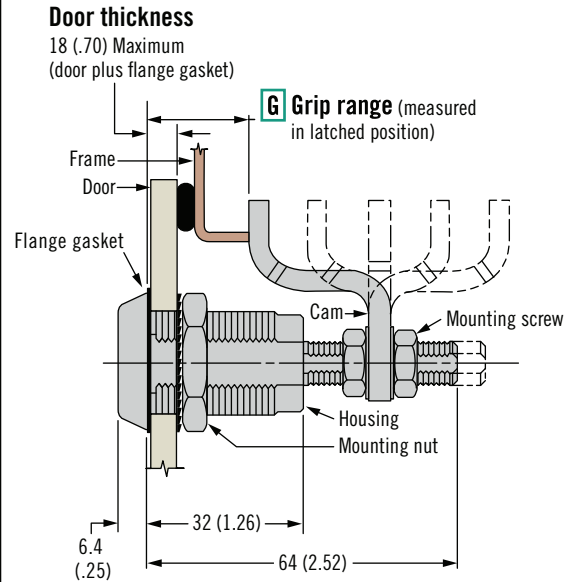
### Keys and Accessories

See pages 118-121

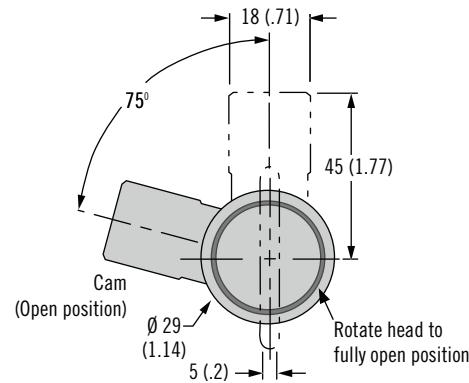
## FIXED GRIP



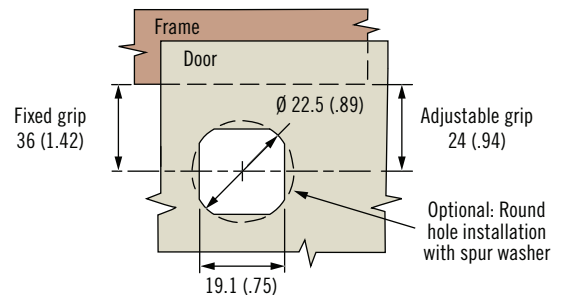
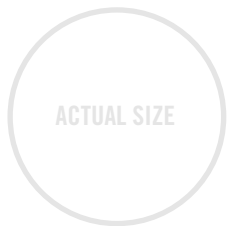
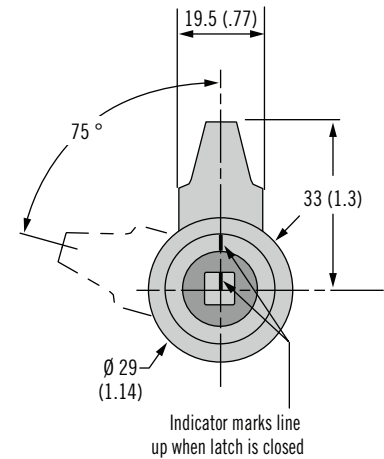
## ADJUSTABLE GRIP

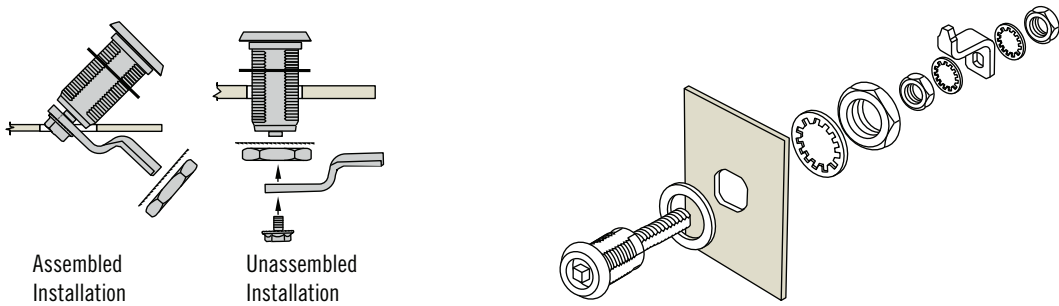


### Latch open Type "A" clockwise to latch



### Latch closed Type "A" clockwise to latch





**Part Number Selection**

**E3 - R H - G F**

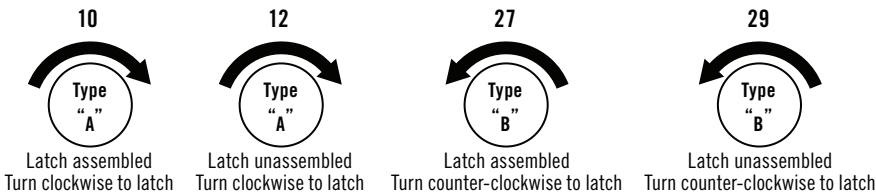
**F Finish**  
 2 Electropolished  
 12 Electropolished and hand buffed (bright)

**H Head Styles**



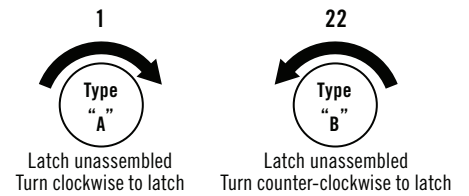
**FIXED GRIP**

**R Rotation**



**ADJUSTABLE GRIP**

**R Rotation**



<b>G Grip Table</b>					
Total Grip	G	Max. Door Thickness for Assembled Latch	Total Grip	G	Max. Door Thickness for Assembled Latch
15 (.59)	00	Use unassembled	35 (1.38)	10	7 (.28)
17 (.67)	01	Use unassembled	37 (1.46)	11	
19 (.75)	02	1 (.04)	39 (1.53)	12	
21 (.83)	03	2 (.08)	41 (1.61)	13	
23 (.91)	04	4 (.16)	43 (1.69)	14	
25 (.98)	05	5 (.20)	45 (1.77)	15	
27 (1.06)	06	6 (.24)	47 (1.85)	16	
29 (1.14)	07	7 (.28)	49 (1.93)	17	
31 (1.22)	08		51 (2.01)	18	
33 (1.30)	09		53 (2.09)	19	

For Fixed Grip, if your grip is between two options choose the smaller grip

G Grip	Minimum	Maximum	Cam Type
1	11.4 (.45)	27.2 (1.07)	Deep offset cam, forward
	66.3 (2.61)	76.2 (3.00)	Deep offset cam, reversed
2	25.4 (1.00)	41.1 (1.62)	Offset cam, forward
	52.6 (2.07)	68.3 (2.69)	Offset cam, reversed
3	38.9 (1.53)	54.6 (2.15)	Straight cam