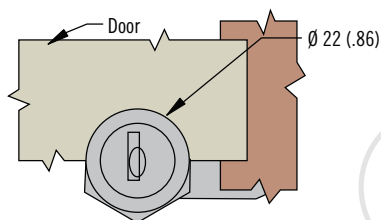


# CM Cam Locks

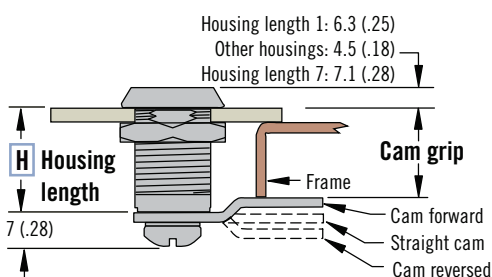
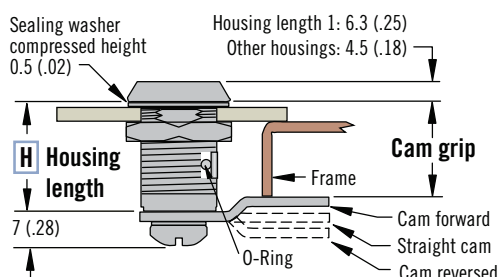
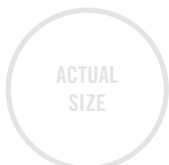
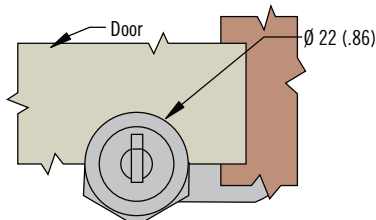
## Fixed core



### Sealed Disc Tumbler

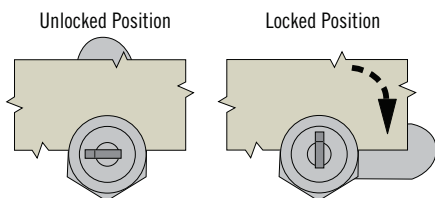


### Non-Sealed Disc Tumbler

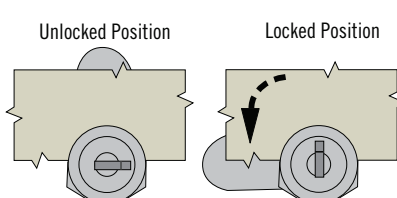


### Cam Rotation

**R** 01 (Clockwise)



**R** 09 (Counter-Clockwise)



### Sealed Version

CM - 2 - **H** **F** 1 **R** - 2SB

- F** Finish
- B** Black powder coated
- C** Chrome plated

Max. Door Thickness	Housing Length	<b>H</b> Housing Length Number
2.4 (.09)	11 (.438)	<b>7 Non-Sealed Only</b>
7.1 (.28)	16 (.625)	1
13.5 (.53)	22 (.875)	2
19.8 (.78)	28.5 (1.125)	6
26.2 (1.03)	35 (1.375)	3
32.5 (1.28)	41 (1.625)	4
38.9 (1.53)	48 (1.875)	5

### Non-sealed version

CM - 5 - **H** S4 **R** - 2TB

- R** Rotation
- 01 Clockwise
- 09 Counter-clockwise

- Stainless steel scalp on housing and lock core on non-shuttered style
- Sealed version meets NEMA 4 and IP65 water intrusion standards
- Cams sold separately

### Material and Finish

Housing: Zinc alloy, chrome plated or black powder coated  
 Scalp: stainless steel (non-sealed only)

### Performance Details

Average ultimate load on cam: 180 N (40 lbf)

### Installation Notes

See page 191

### Accessories

See pages 193

### Notes

Lock: Key code CH751, keyed alike, key removal in locked and unlocked positions (two keys supplied)

### Part Number Selection

Lock part number (no cam)  
 Order lock and cam separately  
 Cam page 191

To select cam part number see grip table page 187

### Notes

CM-2-1 version is sealed but does not meet the NEMA 4 / IP65 standards