



CM Cam Locks

Fixed core wing driver

- Sealed to meet NEMA 4 and IP65 water intrusion standards
- Smooth, consistent operation
- Cams sold separately

Material and Finish

Housing: Zinc alloy, chrome plated or black powder coated

Performance Details

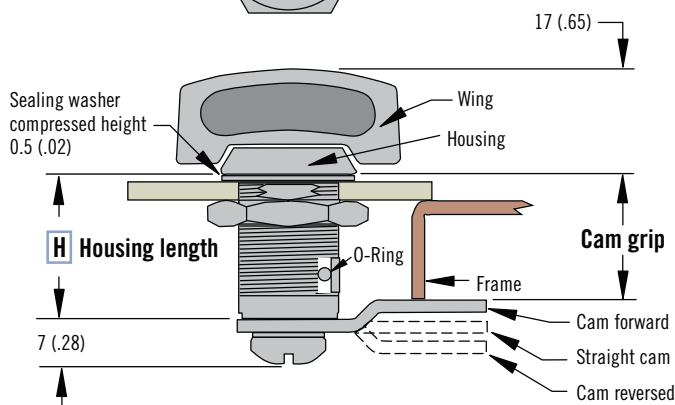
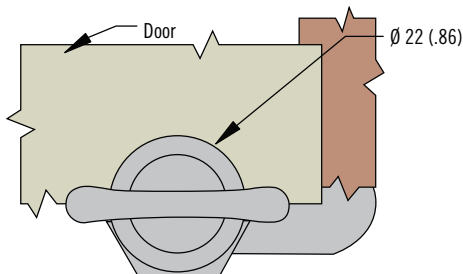
Average ultimate load on cam: 180 N (40 lbf)

Installation Notes

See page 191

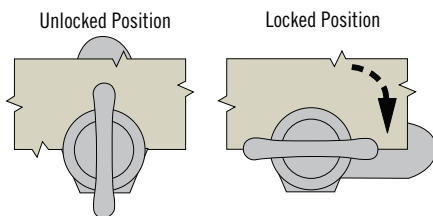
Accessories

See page 193

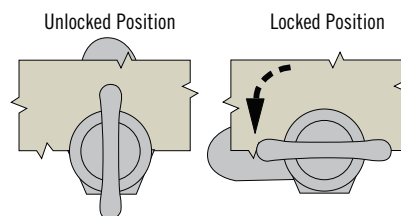


Cam Rotation

R 01 (Clockwise)



R 09 (Counter-Clockwise)



Part Number Selection

Lock part number (no cam)

Order lock and cam separately

Cam page 191

To select cam part number see grip table page 187

F Housing Finish
B Black powder coated
C Chrome plated

R Rotation
01 Clockwise
09 Counter-clockwise

W Wing Finish
B Black powder coated
C Chrome plated

CM - 1 - H F 1 R - 1 W

H Housing Length Number	Housing Length	Max. Door Thickness
1	16 (.625)	7.1 (.28)
2	22 (.875)	13.5 (.53)
3	35 (1.375)	26.2 (1.03)

Dimensions in millimeters (inch) unless otherwise stated



www.southco.com/CM