

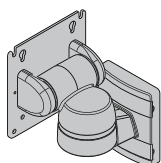


AV Series Dynamic Mounting Arm

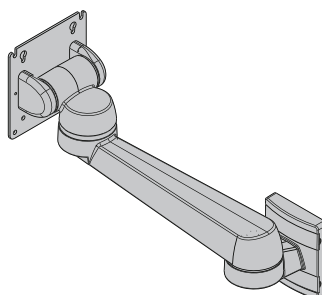
Tilt and swivel · Single arm · Double arm · Heavy Duty

- Intuitive grab and move operation enhances the user experience**
 No knobs or tools required to reposition the display
 Precise control of operating effort ensures ideal “feel” and eliminates “drift”
 Holds securely, even in applications with dynamic loading
- Consistent repeatable operation**
- Fully enclosed for optimum cleanability**
- Snap-on wire management cover**
- Factory assembled and ready for use**

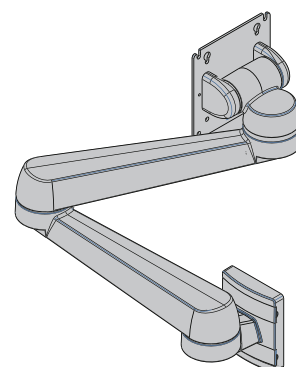
Tilt and Swivel



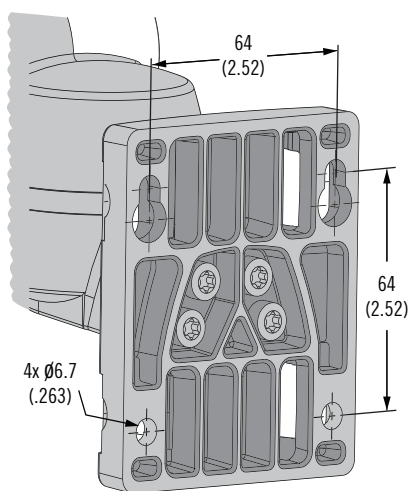
Single Arm



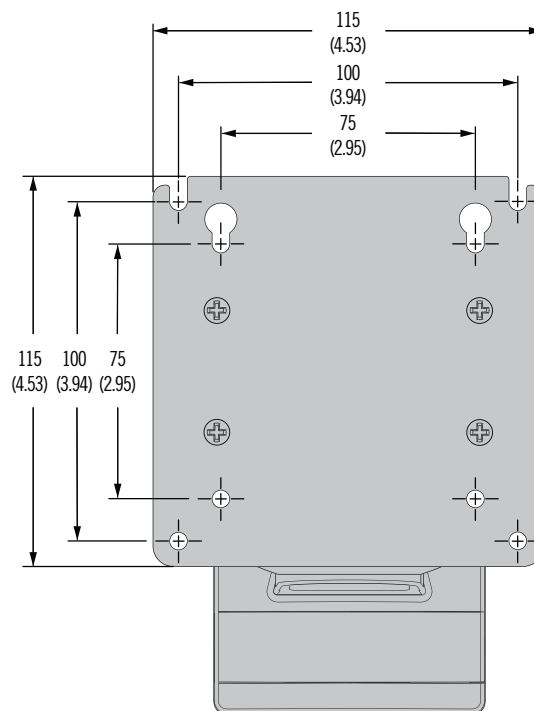
Double Arm



Mounting Pattern



Display Mounting Plate



VESA® MIS-D, 100, C

VESA and VESA MOUNTING COMPLIANT are registered trademarks of Video Electronics Standards Association

Other options available. For complete details on variety, part numbers, installation and specification, go to



www.southco.com/AV

Dimensions in millimeters (inch) unless otherwise stated

southco
CONNECT · CREATE · INNOVATE

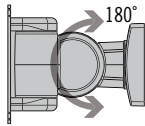
AV Series Dynamic Mounting Arm

Tilt and swivel · Single arm · Double arm · Heavy Duty

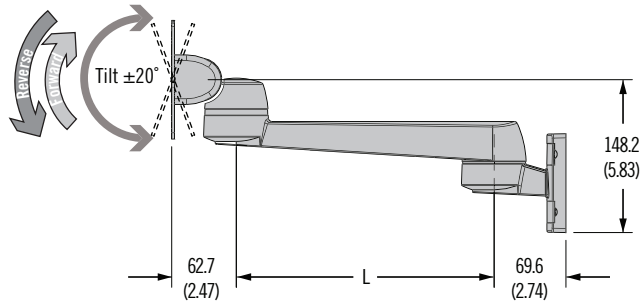
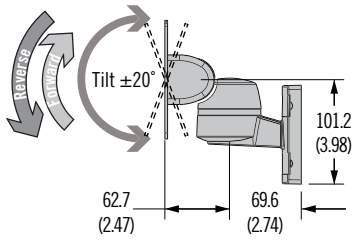
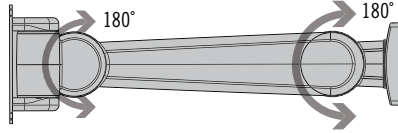


67B

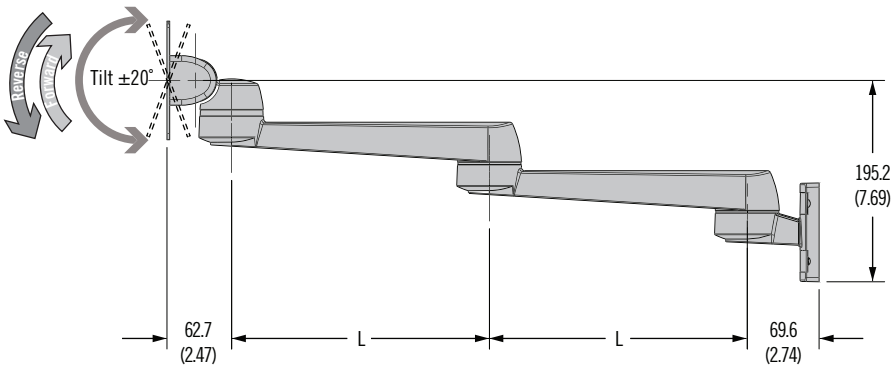
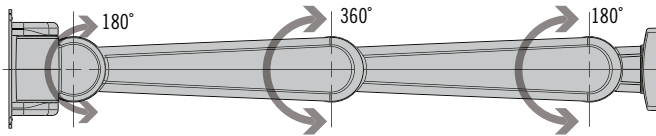
Tilt and Swivel



Single Arm



Double Arm



- Smooth operation enhances the user experience
- Adjust the display without knobs or tools
- Holds securely in every position





AV Series Dynamic Mounting Arm

Tilt and swivel · Single arm · Double arm · Heavy Duty

Material and Finish

Aluminum alloy, powder coated

Performance Details

Cycle performance: 20,000 cycles.

See trade drawing for details.

Note: Double Arm not recommended for displays over 18 kg (39 lb)

Max. dynamic working load:
Model 141, 143: 70 N (15.7 lbf)

Model 142: 100 N (22.5 lbf)

Model 144: 225 N (50.5 lbf)

Average ultimate load:

Tilt/Swivel: 2300 N (517 lbf)

Single Arm: 1600 N (360 lbf)

Double Arm: 1050 N (236 lbf)

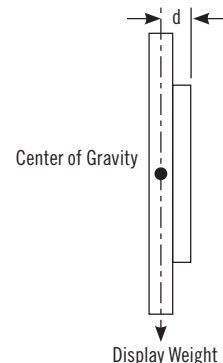
Part Number Example

AV-D40-25A142-50 = Single arm, 250mm, Model 142, black

Specification and Selection

Step 1

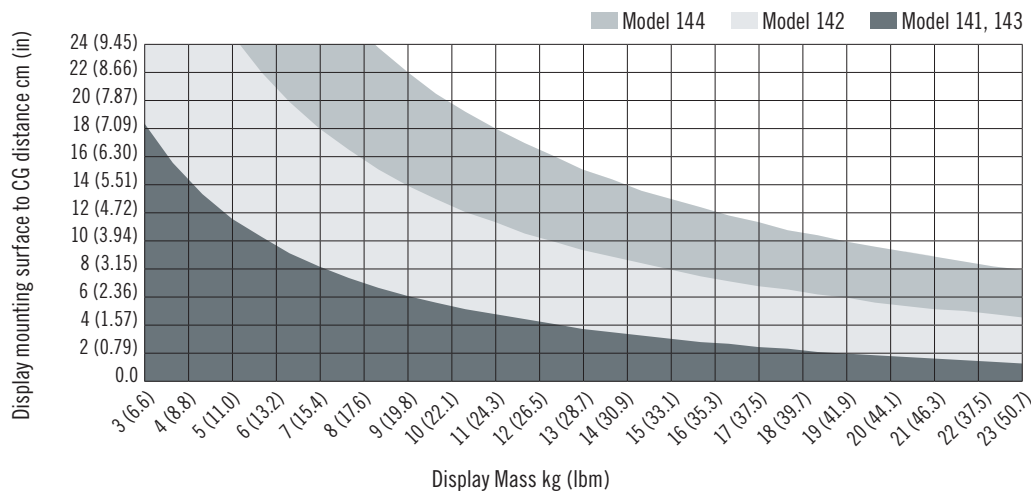
Determine display weight and distance (d) from mounting surface to center of gravity.



Step 2

Use chart below to select model (141, 142, 143 or 144).

Note: Double Arm not recommended for displays over 18 kg (39 lb)



Step 3

Complete part number by selecting length and color options below.

Style	Model	Tilt Torque N·m (in·lbf)		Swivel Torque N·m (in·lbf)			Arm Length, L		
		Reverse	Forward	At Display Mount	At Wall Mount	Center Joint	None	250 (9.8)	325 (12.8)
Tilt and swivel	141	7.9 (70)	1.3 (10)	3 (27)	N/A	N/A	AV-D40-13K141-XX	N/A	N/A
	142	15.4 (136)	2.26 (20)	3 (27)	N/A	N/A	AV-D40-13K142-XX	N/A	N/A
	143	8.6 (76)	6.0 (53)	3 (27)	N/A	N/A	AV-D40-13K143-XX	N/A	N/A
	144	23.1 (204)	7 (62)	3 (27)	N/A	N/A	AV-D40-13K144-XX	N/A	N/A
Single arm	141	7.9 (70)	1.3 (10)	3 (27)	6 (53)	N/A	N/A	AV-D40-25A141-XX	AV-D40-33A141-XX
	142	15.4 (136)	2.26 (20)	3 (27)	6 (53)	N/A	N/A	AV-D40-25A142-XX	AV-D40-33A142-XX
	143	8.6 (76)	6.0 (53)	3 (27)	6 (53)	N/A	N/A	AV-D40-25A143-XX	AV-D40-33A143-XX
	144	23.1 (204)	7 (62)	3 (27)	6 (53)	N/A	N/A	AV-D40-25A144-XX	AV-D40-33A144-XX
Double arm	141	7.9 (70)	1.3 (10)	3 (27)	6 (53)	3 (27)	N/A	AV-D40-50D141-XX	AV-D40-65D141-XX
	142	15.4 (136)	2.26 (20)	3 (27)	6 (53)	3 (27)	N/A	AV-D40-50D142-XX	AV-D40-65D142-XX
	143	8.6 (76)	6.0 (53)	3 (27)	6 (53)	3 (27)	N/A	AV-D40-50D143-XX	AV-D40-65D143-XX
	144	23.1 (204)	7 (62)	3 (27)	6 (53)	3 (27)	N/A	AV-D40-50D144-XX	AV-D40-65D144-XX

XX	Color
50	Black
76	White

Other options available. For complete details on variety, part numbers, installation and specification, go to

INFO CLIC www.southco.com/AV

Dimensions in millimeters (inch) unless otherwise stated

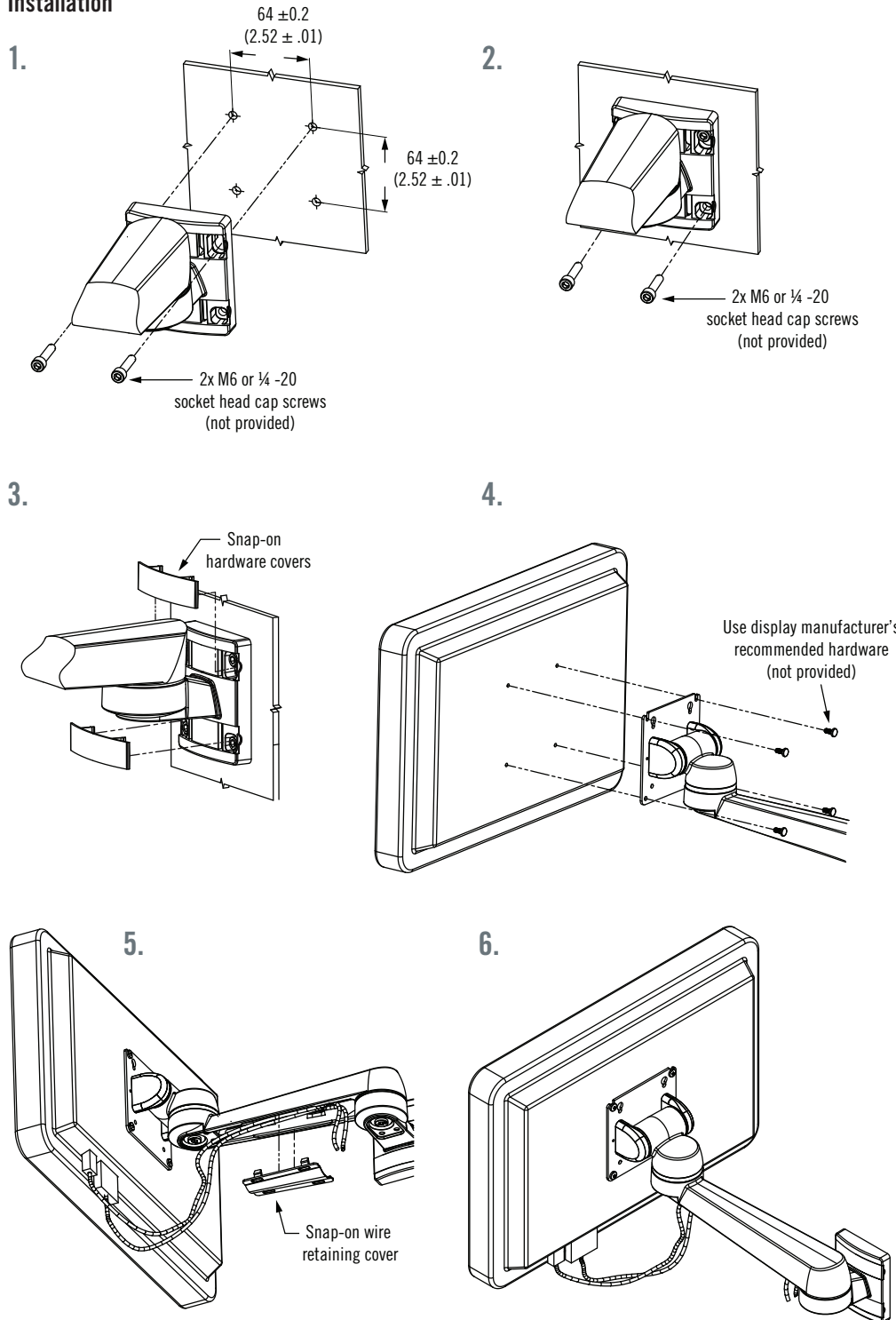
AV Series Dynamic Mounting Arm

Tilt and swivel · Single arm · Double arm · Heavy Duty



67D

Installation



- Smooth operation enhances the user experience
- Adjust the display without knobs or tools
- Holds securely in every position



Mounting screws affixing the arm to the mounting plate shall not be removed or loosened. Should removal or loosening of mounting screws occur, replace mounting screws using new M6-1.0 x 25, Class 12.9, high tensile cap head screws and plain washers, tighten to 14-16Nm. Maximum arm loading—single arm-23Kg/ double arm-18Kg. Removal or loosening, or in the event of removal or loosening and failure to replace factory installed mounting screws with manufacturer specified new mounting screws, tightened to 14-16Nm may result in catastrophic failure of bolts causing mounted equipment to fall from mounting surface causing injury to persons and property.