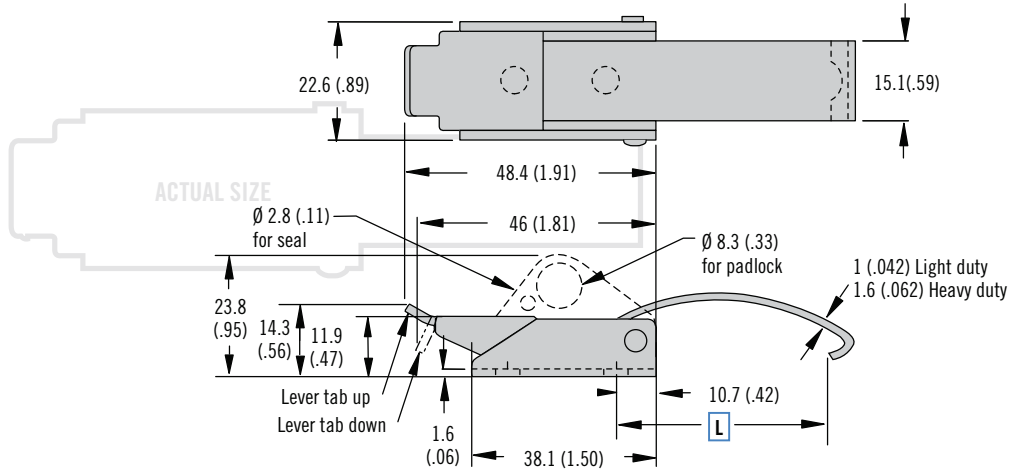


97 Draw Latch

Over-center · Medium



- Multiple link and keeper options for application variances
- Secondary locking style available

Material and Finish

Stainless steel, steel, zinc plated or steel, black powder coated

Performance Details

Heavy-duty:
Clamping force: 670 N (150 lbf)

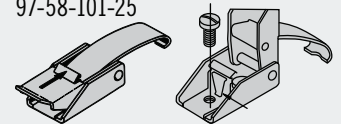
Light-duty:
Clamping force: 310 N (70 lbf)

Installation Notes

Install assembly with M4 (No. 8) round head screws or 4 (.156) rivets (not supplied). Peg needs flat head.

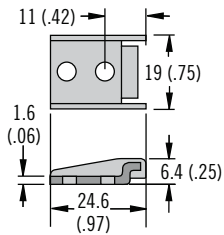
Accessories

Secondary catch provides resistance against severe vibration and accidental opening.
Part number steel: 97-58-101-11
Part number stainless steel: 97-58-101-25

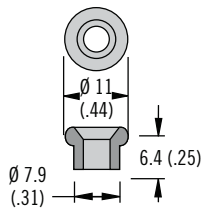


Keepers

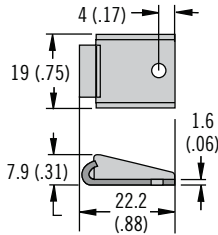
Concealed 2 Hole



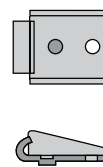
Single Hole Peg Style



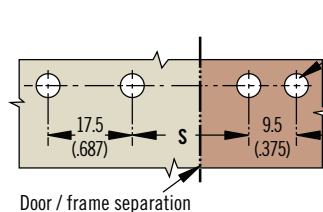
Exposed Single Hole



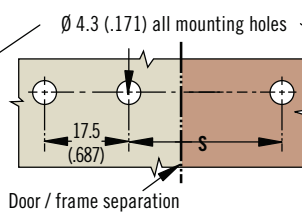
Exposed 1 Hole 1 Lug



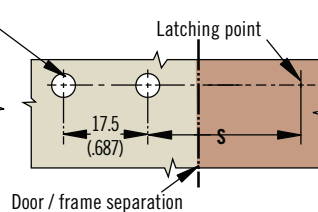
Two Hole Keepers



Single Hole Keepers



Latch Only



Part Number Selection

Order latch and keeper separately
For latch part number see builder
For keeper part number see table

S Style

- 1 Lever tab up
- 2 Lever tab down
- 3 Padlockable

L Link Length

- | | |
|-----------------------|-----------------------|
| 1 Short (light-duty) | 5 Short (heavy-duty) |
| 2 Medium (light-duty) | 6 Medium (heavy-duty) |
| 3 Long (light-duty) | 7 Long (heavy-duty) |

97 - 50 - **S** **L** 0 - 1 **M**

M Material

- 1 Steel, zinc plated
- 2 Stainless steel (light-duty only)
- 5 Steel, black powder coated

Keeper Style	Keeper Part Number		S Dimension		
	Steel	Stainless Steel	Short Link L = 29.4 (1.16)	Medium Link L = 42.1 (1.66)	Long Link L = 54.8 (2.16)
Concealed 2 hole	97-57-103-11	97-57-103-24	15.9 (.63)	28.6 (1.13)	41.3 (1.63)
Single hole peg style	97-57-105-11	97-57-105-24	29.4 (1.16)	42.1 (1.66)	54.8 (2.16)
Exposed single hole	97-57-104-11	97-57-104-24	47.6 (1.88)	60.3 (2.38)	73.0 (2.88)
Exposed 1 hole 1 lug	97-57-102-11	97-57-102-24	38.1 (1.50)	50.8 (2.00)	63.5 (2.50)
Latch only			31.8 (1.25)	44.5 (1.75)	57.1 (2.25)