



96 Hinge

Lift-off · In-line · Plastic

- Allows for quick, easy door removal
- Door can also be permanently installed

Material and Finish

Black: Glass reinforced nylon
 Chrome: PC/ABS blend, chrome

Performance Details

Black	Radial Load	Axial Load
Max. static load	700 N (155 lbf)	1200 N (270 lbf)
Average Ultimate load	1000 N (224 lbf)	3500 N (785 lbf)

Chrome	Radial load	Axial load
Max. static load	350 N (79 lbf)	900 N (202 lbf)
Average ultimate load	600 N (135 lbf)	2200 N (495 lbf)

Installation Notes

Recommended tightening torque for mounting screws:
 1.6 N·m (14 in·lbf)

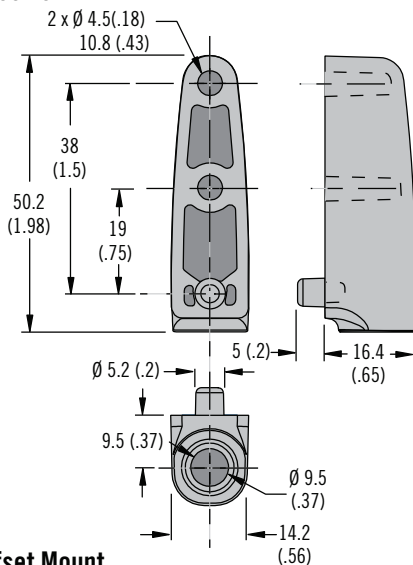
Offset mount preparation:
 To allow for 180° rotation A or B must be $8.5 \pm (.33 \pm .04)$

Part Number

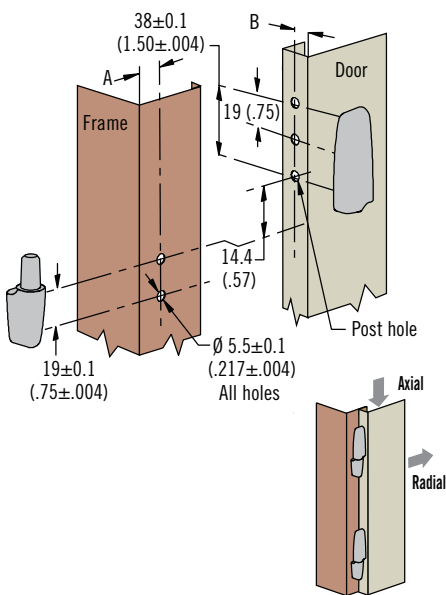
See table

Order pin, receiver and screws separately

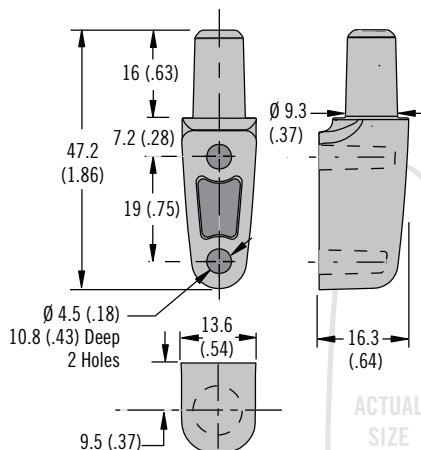
Receiver



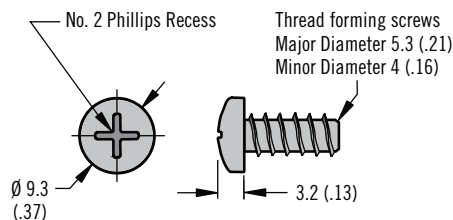
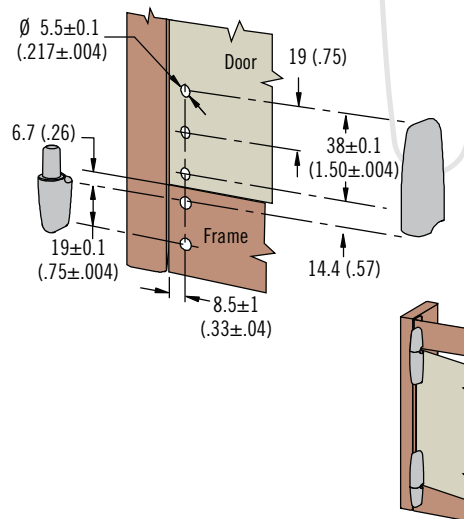
Offset Mount



Pin



Flush Mount



Door Thickness	Part Number
	Screws (4 per bag)
1 - 4 (.04 - .16)	96-79-1
4 - 7 (.16 - .28)	96-79-2
7 - 10 (.28 - .39)	96-79-3
10 - 13 (.39 - .51)	96-79-4

Finish	Part Number	
	Pin	Receiver
Black	96-710	96-720
Chrome	96-711	96-721

Dimensions in millimeters (inch) unless otherwise stated