

SOUTHCO No. 85 FASTENER KNURLED HEAD STUD SPECIFICATIONS

DATE 5-8-57
DRAWN E.S.K.
CHKD ASK.
SCALE N.T.S.

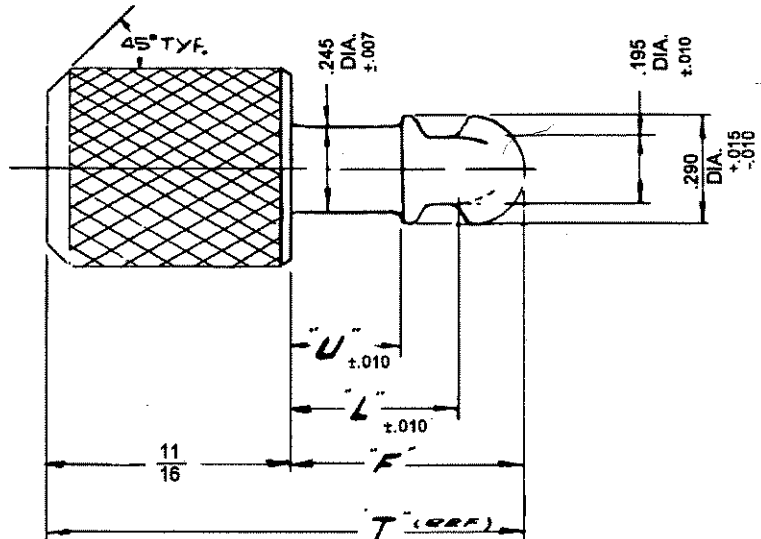
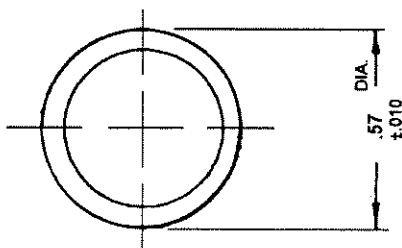
DRAWING NUMBER
J-85-8-1

SOUTHCO PART N°	LION PART N°	"U"	"L"	"F"	"T"
85-13-060-16	5-K-60	.165	.320	.505	1.192
85-13-080-16	5-K-80	.185	.340	.525	1.212
85-13-100-16	5-K-100	.205	.360	.545	1.232
85-13-120-16	5-K-120	.225	.380	.565	1.252
85-13-140-16	5-K-140	.245	.400	.585	1.272
85-13-160-16	5-K-160	.265	.420	.605	1.292
85-13-180-16	5-K-180	.285	.440	.625	1.312
85-13-200-16	5-K-200	.305	.460	.645	1.332
85-13-220-16	5-K-220	.325	.480	.665	1.352
85-13-240-16	5-K-240	.345	.500	.685	1.372
85-13-260-16	5-K-260	.365	.520	.705	1.392
85-13-280-16	5-K-280	.385	.540	.725	1.412
85-13-300-16	5-K-300	.405	.560	.745	1.432
85-13-320-16	5-K-320	.425	.580	.765	1.452
85-13-340-16	5-K-340	.445	.600	.785	1.472
85-13-360-16	5-K-360	.465	.620	.805	1.492
85-13-380-16	5-K-380	.485	.640	.825	1.512
85-13-400-16	5-K-400	.505	.660	.845	1.532
85-13-420-16	5-K-420	.525	.680	.865	1.552
85-13-440-16	5-K-440	.545	.700	.885	1.572
85-13-460-16	5-K-460	.565	.720	.905	1.592
85-13-480-16	5-K-480	.585	.740	.925	1.612
85-13-500-16	5-K-500	.605	.760	.945	1.632
85-13-520-16	5-K-520	.625	.780	.965	1.652

SOUTHCO PART N°	LION PART N°	"U"	"L"	"F"	"T"
85-13-540-16	5-K-540	.645	.800	.985	1.672
85-13-560-16	5-K-560	.665	.820	1.005	1.692
85-13-580-16	5-K-580	.685	.840	1.025	1.712
85-13-600-16	5-K-600	.705	.860	1.045	1.732
85-13-620-16	5-K-620	.725	.880	1.065	1.752
85-13-640-16	5-K-640	.745	.900	1.085	1.772
85-13-660-16	5-K-660	.765	.920	1.105	1.792
85-13-680-16	5-K-680	.785	.940	1.125	1.812
85-13-700-16	5-K-700	.805	.960	1.145	1.832
85-13-720-16	5-K-720	.825	.980	1.165	1.852
85-13-740-16	5-K-740	.845	1.000	1.185	1.872
85-13-760-16	5-K-760	.865	1.020	1.205	1.892
85-13-780-16	5-K-780	.885	1.040	1.225	1.912
85-13-800-16	5-K-800	.905	1.060	1.245	1.932
85-13-820-16	5-K-820	.925	1.080	1.265	1.952
85-13-840-16	5-K-840	.945	1.100	1.285	1.972
85-13-860-16	5-K-860	.965	1.120	1.305	1.992
85-13-880-16	5-K-880	.985	1.140	1.325	2.012
85-13-900-16	5-K-900	1.005	1.160	1.345	2.032
85-13-920-16	5-K-920	1.025	1.180	1.365	2.052
85-13-940-16	5-K-940	1.045	1.200	1.385	2.072
85-13-960-16	5-K-960	1.065	1.220	1.405	2.092
85-13-980-16	5-K-980	1.085	1.240	1.425	2.112
85-13-1000-16	5-K-1000	1.105	1.260	1.445	2.132

DRAWING NUMBER
J-85-8-1

REV. "E" 16DEC66 JAC PRN: S-1-06A
REV. "D" 01MAY64 WFF PRN: S-1-06B



MATERIAL - STEEL, LOW CARBON
CASE HARDENED.

FINISH - ZINC PLATE, CHROMATE PLUS
SEALER.

PROPRIETARY ITEM - EXCEPT FOR USES EXPRESSLY GRANTED IN WRITING.
INFORMATION DISCLOSED HEREON IS CONFIDENTIAL AND ALL RIGHTS,
PATENT AND OTHERWISE, ARE RESERVED BY SOUTHCO, INC.

