



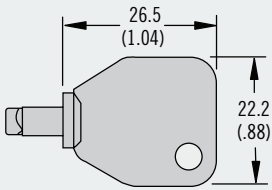
82 DZUS® Lion Quarter-Turn Fasteners Studs

Material and Finish

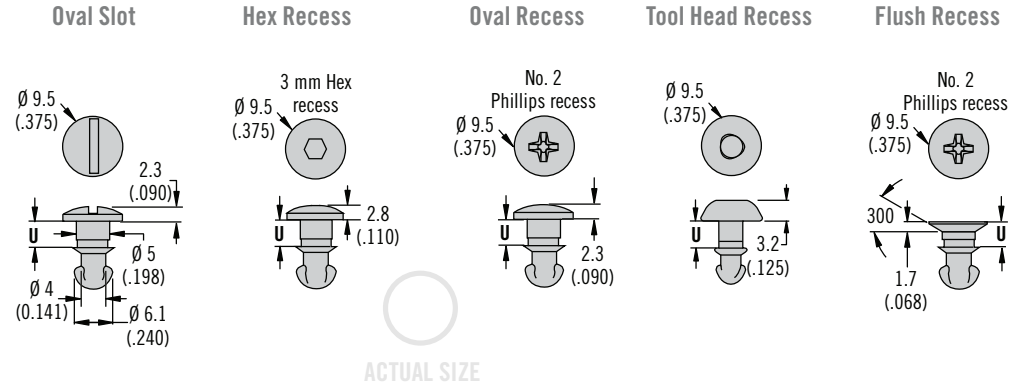
Studs: Steel, zinc plated and chromate or stainless steel
Bail cover: ABS, black

Accessories

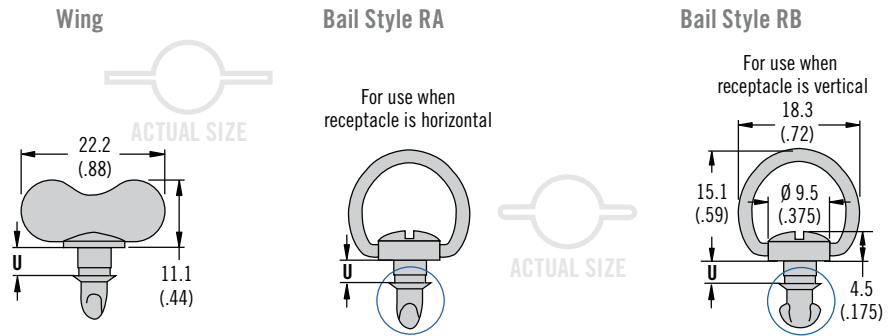
Tool head recess key:
Part number: 29-90-214-10



H Head Styles - Tool Actuated



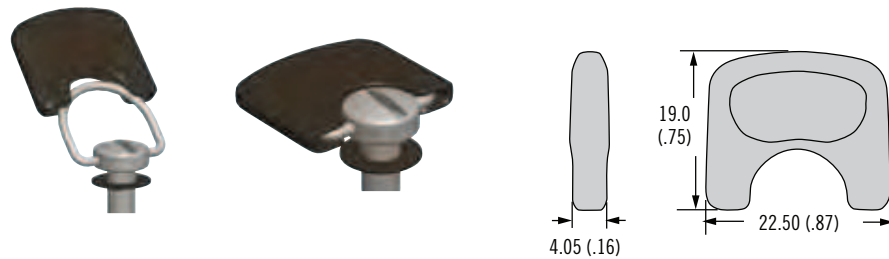
H Head Styles - Hand Actuated



Installation Notes

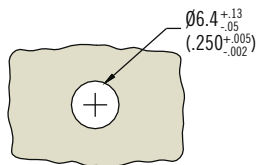
Bail cover:
A retainer must be fitted under the stud head to fit flush with surface
Retainer part number 82-32-301-12 (see page 279)

Optional Bail Cover



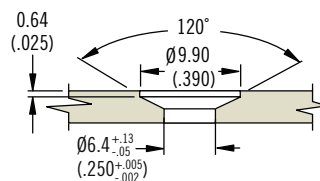
Bail Cover Part Number
82-2-B-000

Stud Panel Preparation



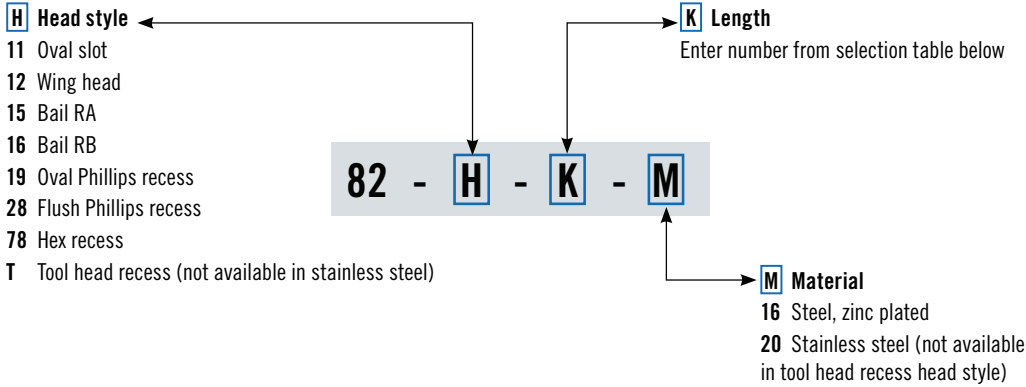
Flush Head Styles

(when outer panel is 1.3 (.050) or greater)



82 DZUS® Lion Quarter-Turn Fasteners

Stud selection



Part Number Selection

82

85

D8

D1

D4

D7

NY



To select correct fastener:

1. Select receptacle

Choose a receptacle from pages 274 - 278

2. Select retainer and accessories

from page 279 and note any adjustment values

3. Specify stud length

Calculate the total material thickness (TMT) using the formula given for the receptacle selected. Find the range of TMT using the stud length selection table (left) using the column (A, B, C, or D) given for the receptacle selected, find **K**

4. Complete the stud part number

by specifying the head style **H**, stud length **K**, and material **M**

Example:

For rivet-on with base receptacle 82-35-302-15 use column D

For TMT value calculated as 5.2 (.206), K = 200

For slotted head style in steel material, completed part number: 82-11-200-16

A complete example can be found on page 271

Notes

Stainless steel material may require a higher minimum order quantity. Contact Southco for details.

Stud Length Table									
A		B		C		D		K	U
TMT Range For: 82-35-306-10		TMT Range For: 82-35-308-55 82-35-310-55		TMT Range For: 82-35-315-55		TMT Range For: All Other Receptacles			
Min.	Max.	Min.	Max.	Min.	Max.	Min.	Max.		
0.7 (.026)	1.2 (.045)	~	~	~	~	2.3 (.090)	2.8 (.110)	100	3.2 (.127)
1.2 (.045)	1.7 (.065)	~	~	~	~	2.8 (.110)	3.3 (.130)	120	3.7 (.147)
1.7 (.065)	2.2 (.085)	~	~	~	~	3.3 (.130)	3.8 (.150)	140	4.2 (.167)
2.2 (.085)	2.7 (.105)	0 (0)	0.5 (.019)	1.3 (.050)	1.8 (.070)	3.8 (.150)	4.3 (.170)	160	4.7 (.187)
2.7 (.105)	3.2 (.125)	0.5 (.019)	1 (.039)	1.8 (.070)	2.3 (.090)	4.3 (.170)	4.8 (.190)	180	5.3 (.207)
3.2 (.125)	3.7 (.145)	1 (.039)	1.5 (.059)	2.3 (.090)	2.8 (.110)	4.8 (.190)	5.3 (.210)	200	5.8 (.227)
3.7 (.145)	4.2 (.165)	1.5 (.059)	2 (.079)	2.8 (.110)	3.3 (.130)	5.3 (.210)	5.8 (.230)	220	6.3 (.247)
4.2 (.165)	4.7 (.185)	2 (.079)	2.5 (.099)	3.3 (.130)	3.8 (.150)	5.8 (.230)	6.3 (.250)	240	6.8 (.267)
4.7 (.185)	5.2 (.205)	2.5 (.099)	3 (.119)	3.8 (.150)	4.3 (.170)	6.4 (.250)	6.9 (.270)	260	7.3 (.287)
5.2 (.205)	5.7 (.225)	3 (.119)	3.5 (.139)	4.3 (.170)	4.8 (.190)	6.9 (.270)	7.4 (.290)	280	7.8 (.307)
5.7 (.225)	6.2 (.245)	3.5 (.139)	4.1 (.159)	4.8 (.190)	5.3 (.210)	7.4 (.290)	7.9 (.310)	300	8.3 (.327)
~	~	4.1 (.159)	4.6 (.179)	5.3 (.210)	5.8 (.230)	7.9 (.310)	8.4 (.330)	320	8.8 (.347)
~	~	4.6 (.179)	5.1 (.199)	5.8 (.230)	6.3 (.250)	8.4 (.330)	8.9 (.350)	340	9.3 (.367)
~	~	5.1 (.199)	5.6 (.219)	6.3 (.250)	6.8 (.270)	8.9 (.350)	9.4 (.370)	360	9.8 (.387)
~	~	5.6 (.219)	6.1 (.239)	6.8 (.270)	7.3 (.290)	9.4 (.370)	9.9 (.390)	380	10.3 (.407)
~	~	6.1 (.239)	6.6 (.259)	7.3 (.290)	7.8 (.310)	9.9 (.390)	10.4 (.410)	400	10.8 (.427)
~	~	6.6 (.259)	7.1 (.279)	7.8 (.310)	8.3 (.330)	10.4 (.410)	10.9 (.430)	420	11.4 (.447)
~	~	7.1 (.279)	7.6 (.299)	8.3 (.330)	8.8 (.350)	10.9 (.430)	11.4 (.450)	440	11.9 (.467)
~	~	7.6 (.299)	8.1 (.319)	8.8 (.350)	9.3 (.370)	11.4 (.450)	11.9 (.470)	460	12.4 (.487)
~	~	8.1 (.319)	8.6 (.339)	9.3 (.370)	9.8 (.390)	11.9 (.470)	12.4 (.490)	480	12.9 (.507)
~	~	8.6 (.339)	9.1 (.359)	9.8 (.390)	10.3 (.410)	12.5 (.490)	12.9 (.510)	500	13.4 (.527)
~	~	9.1 (.359)	9.6 (.379)	10.3 (.410)	10.8 (.430)	13 (.510)	13.5 (.530)	520	13.9 (.547)
~	~	9.6 (.379)	10.1 (.399)	10.8 (.430)	11.3 (.450)	13.5 (.530)	14 (.550)	540	14.4 (.567)
~	~	10.1 (.399)	10.6 (.419)	11.3 (.450)	11.8 (.470)	14 (.550)	14.5 (.570)	560	14.9 (.587)
~	~	10.6 (.419)	11.1 (.439)	11.8 (.470)	12.3 (.490)	14.5 (.570)	15 (.590)	580	15.4 (.607)



82 DZUS[®] Lion Quarter-Turn Fasteners Receptacles

Material and Finish

Steel, zinc immersion coating

Installation Notes

Install with \varnothing 2.5 (3/32) rivets, spring plate must float freely after riveting

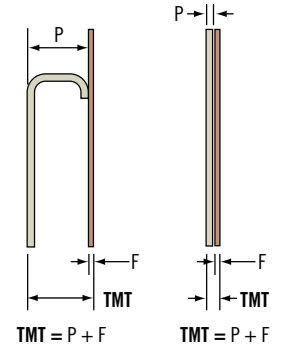
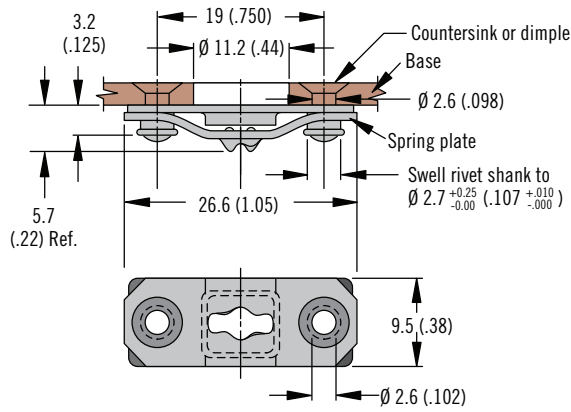
Part Number

See table

Notes

Utilize stud selection column indicated when choosing a stud length from the stud length table on page 273

Rivet-On With Base



ACTUAL SIZE

Part Number	Stud Selection Column
82-35-302-15	D

Material and Finish

Steel, zinc immersion coating or stainless steel

Installation Notes

Install with \varnothing 2.5 (3/32) rivets, spring plate must float freely after riveting

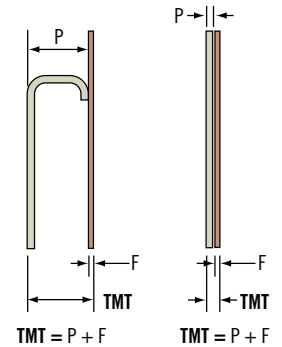
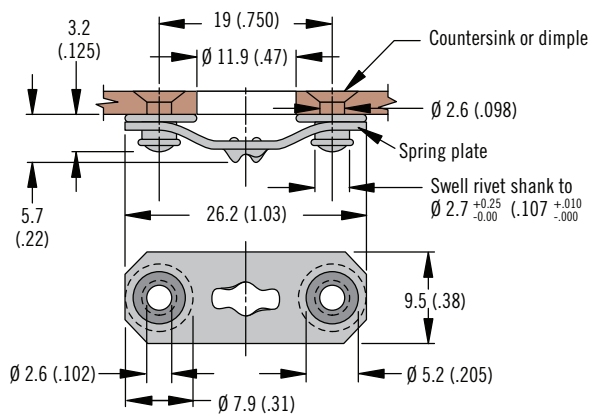
Part Number

See table

Notes

Utilize stud selection column indicated when choosing a stud length from the stud length table on page 273

Rivet-On Without Base



ACTUAL SIZE

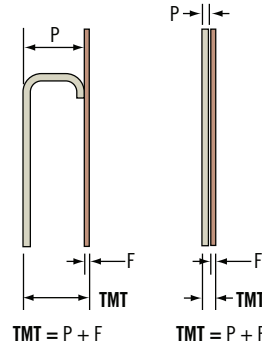
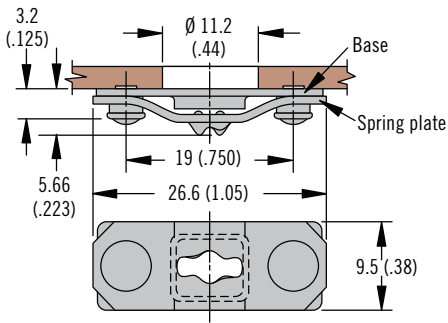
Material	Part Number	Stud Selection Column
Steel	82-35-295-15	D
Stainless steel	82-35-295-20	

82 DZUS® Lion Quarter-Turn Fasteners Receptacles



275

Weld-On



ACTUAL SIZE

Part Number	Stud Selection Column
82-35-303-15	D

Material and Finish

Steel, zinc immersion coating

Installation Notes

Spring plate must float freely after welding

82

85

D8

D1

D4

D7

NY

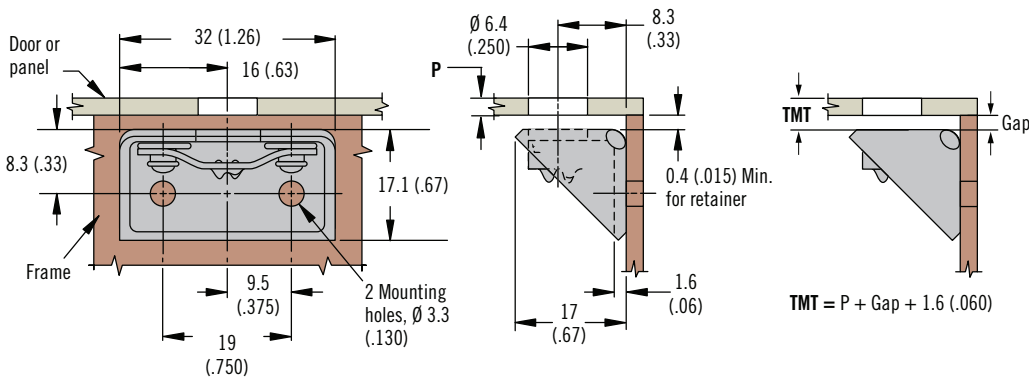
Part Number

See table

Notes

Utilize stud selection column indicated when choosing a stud length from the stud length table on page 273

Side Mount



ACTUAL SIZE

Part Number	Stud Selection Column
82-45-101-15	D

Material and Finish

Steel, zinc immersion coating

Installation Notes

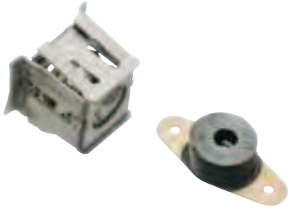
Install with Ø 2.5 (3/32) rivets

Part Number

See table

Notes

Utilize stud selection column indicated when choosing a stud length from the stud length table on page 273



82 DZUS[®] Lion Quarter-Turn Fasteners Receptacles

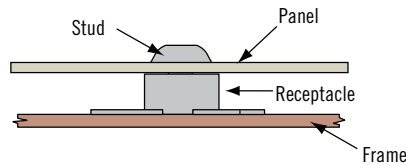
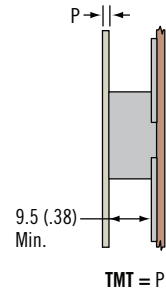
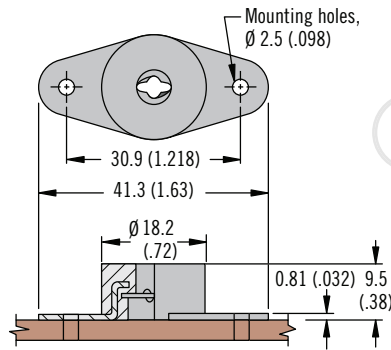
Material and Finish

Steel, zinc plated and neoprene

Installation Notes

Install with \varnothing 2.5 (3/32) rivets

Vibration Isolating



Part Number	Stud Selection Column
82-35-306-10	A

Part Number

See table

Notes

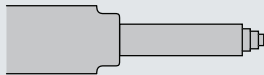
Utilize stud selection column indicated when choosing a stud length from the stud length table on page 273

Material and Finish

Steel, zinc plated and stainless steel

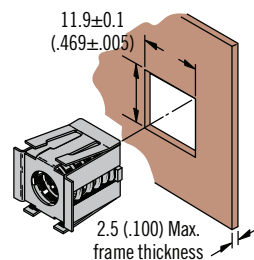
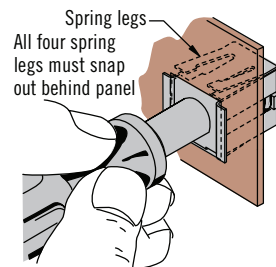
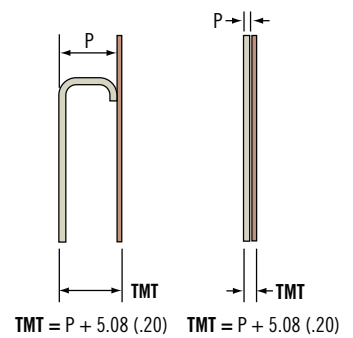
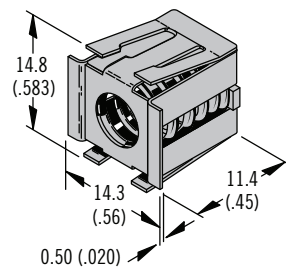
Installation Notes

Installation Tool



Part Number: 29-8125-309

Snap-In - Front Mount



Part Number

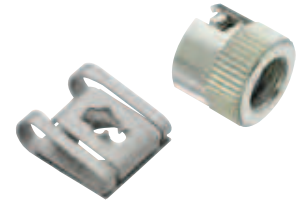
See table

Notes

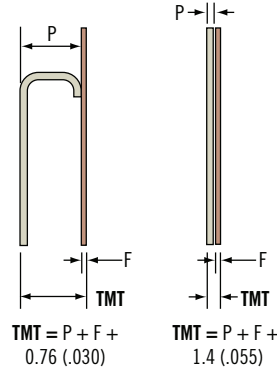
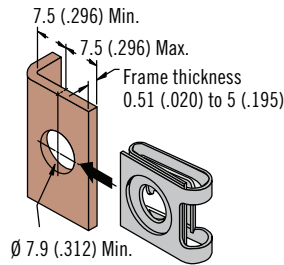
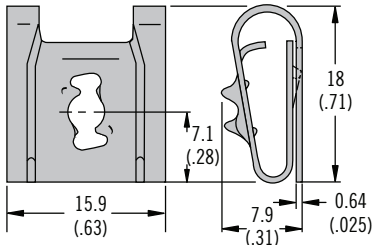
Utilize stud selection column indicated when choosing a stud length from the stud length table on page 273

Part Number	Stud Selection Column
82-35-309-56	D

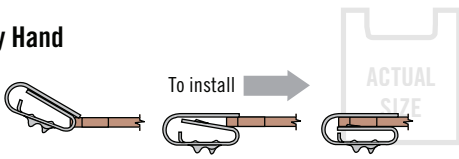
82 DZUS® Lion Quarter-Turn Fasteners Receptacles



Clip-On



By Hand



With Screwdriver



Material	Part Number	Stud Selection Column
Steel	82-47-113-15	D
Stainless steel	82-47-113-20	

Material and Finish

Steel, zinc immersion coating or stainless steel

82

85

D8

D1

D4

D7

NY

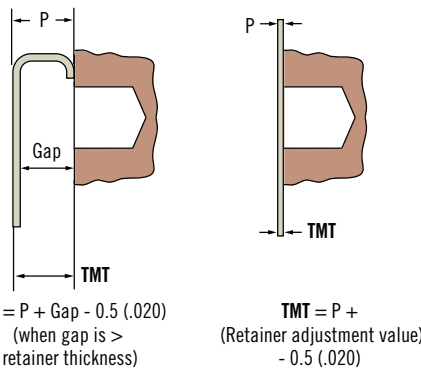
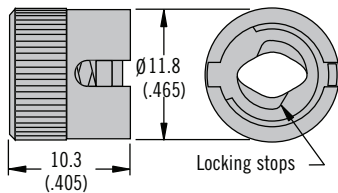
Part Number

See table

Notes

Utilize stud selection column indicated when choosing a stud length from the stud length table on page 273

Press-In



Material and Finish

Steel, zinc plated and stainless steel

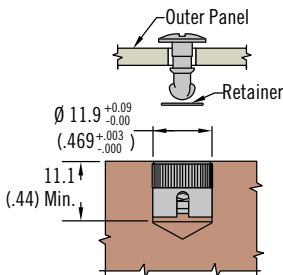
Installation Notes

Press receptacle flush to frame

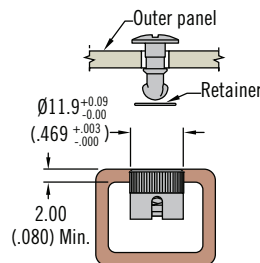
Notes

Receptacle shown installed flush to the frame. To eliminate the gap between the frame and outer panel, install to a depth \geq the thickness of the selected retainer. This depth should be added to the TMT.

Solid Install



Blind Install



Part Number	Stud Selection Column
82-35-308-55	B

Part Number

See table

Notes

Utilize stud selection column indicated when choosing a stud length from the stud length table on page 273



82 DZUS® Lion Quarter-Turn Fasteners Receptacles

Material and Finish

Steel, zinc plated and stainless steel

Installation Notes

Press receptacle flush to frame

Notes

Receptacle shown installed flush to the frame. To eliminate the gap between the frame and outer panel, install to a depth \geq the thickness of the selected retainer. This depth should be added to the TMT.

Part Number

See table

Notes

Utilize stud selection column indicated when choosing a stud length from the stud length table on page 273

Material and Finish

Steel, zinc plated and stainless steel

Installation Notes

For use in low carbon steels, aluminum and stainless steels in the annealed condition that are R_p85 or softer

See page 497 for installation guidelines

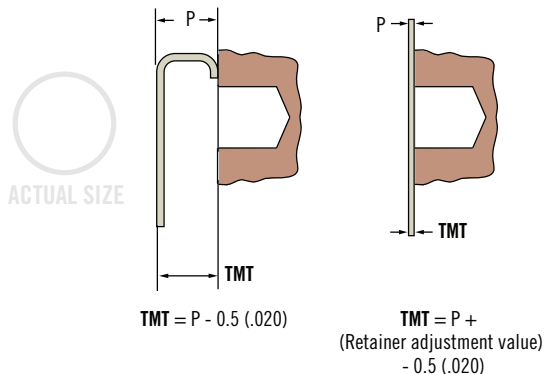
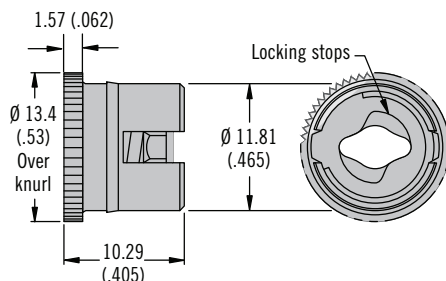
Part Number

See table

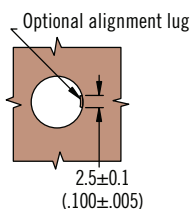
Notes

Utilize stud selection column indicated when choosing a stud length from the stud length table on page 273

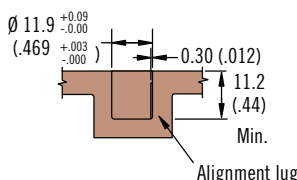
Ultrasonic For Thermoplastics



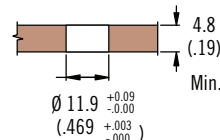
Installation



Blind Hole Installation

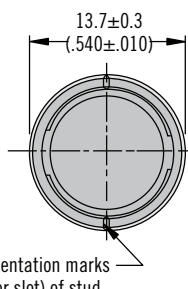
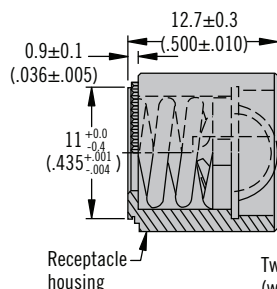


Thru Hole Installation

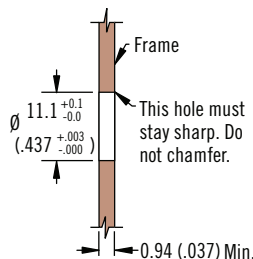
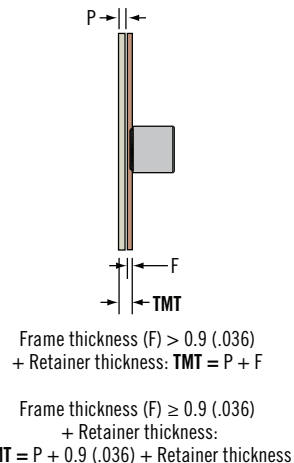
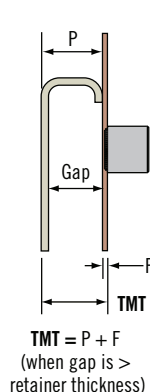


Part Number	Stud Selection Column
82-35-310-55	B

Shielded – Self-Clinching



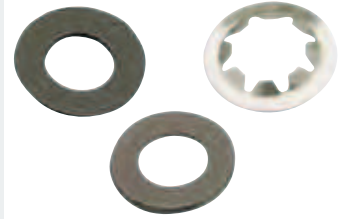
Two orientation marks (wing or slot) of stud will be 90° from these marks when fastened



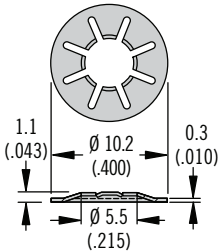
Part Number	Stud Selection Column
82-35-315-55	C

82 DZUS® Lion Quarter-Turn Fasteners

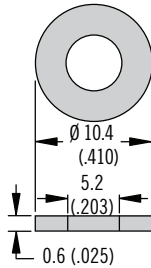
Retainers · Accessories



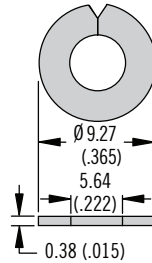
Retainer Push-On



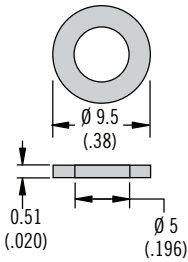
Retainer Push-On Plastic



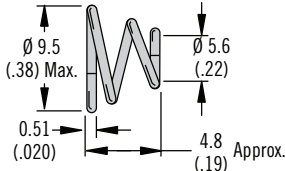
Retainer Split



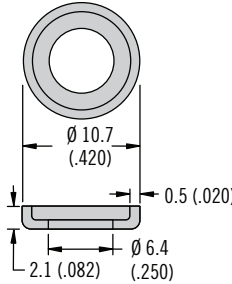
Sealing Washer



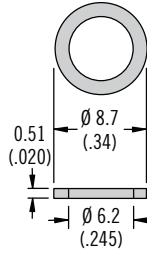
Ejector Spring



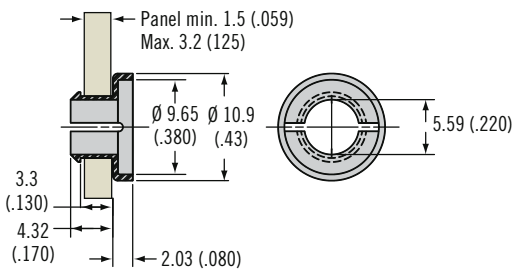
Cupped Washer



Flat Wear Washer



Snap-In Retainer

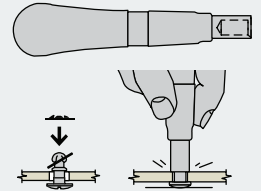


Material and Finish

See table

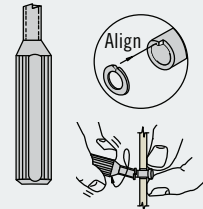
Installation Notes

For standard retainers:



Part Number: 82-0-22542-11

For split retainers:



Part Number: 82-0-7595-11

Notes

For snap-in retainer:

Min. stud **K** = 180 when using snap-in retainer (see page 273 for **K** reference).

Install stud into retainer before inserting into panel

Part Number

See table

Notes

Adjustment value:

When using accessories the components increase TMT

Add the adjustment value to your outer panel thickness (P) when calculating TMT (see page 271 for example)

82
85
D8
D1
D4
D7
NY