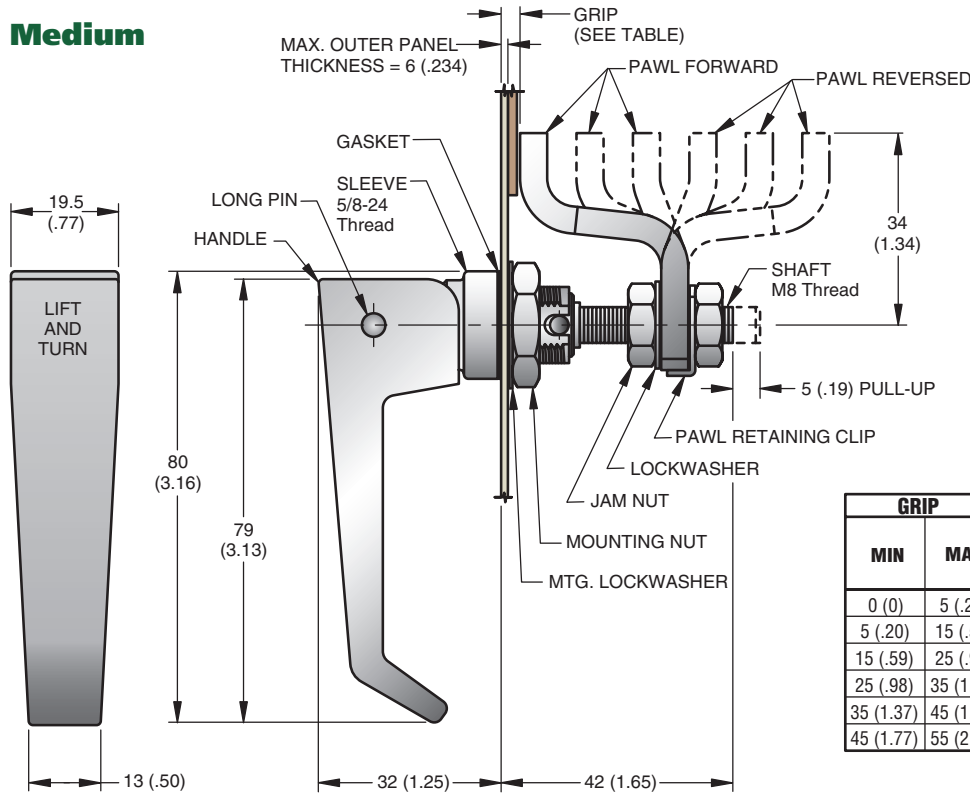


Southco® Compression Latches

Lift and Turn Series, Handle Style

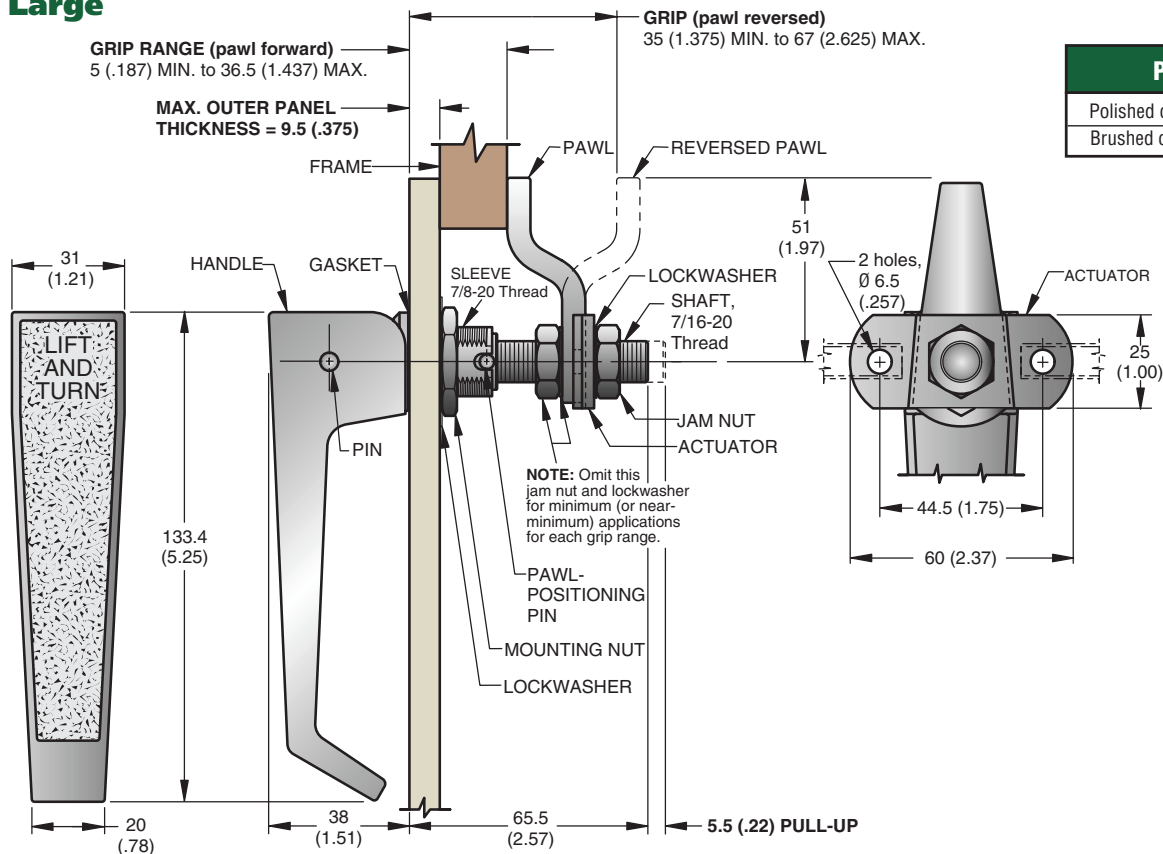
- Medium and Large sizes
- Use actuator with Large size for 3-point latching (See pages 160 to 164)

Medium



| GRIP | | PART NUMBER | | |
|-----------|-----------|-----------------|----------------|---------------------|
| MIN | MAX | POLISHED CHROME | BRUSHED CHROME | BLACK POWDER COATED |
| 0 (0) | 5 (.20) | 62-30-11 • | 62-30-12 • | 62-30-15 • |
| 5 (.20) | 15 (.59) | 62-30-21 • | 62-30-22 • | 62-30-25 • |
| 15 (.59) | 25 (.98) | 62-30-31 • | 62-30-32 • | 62-30-35 • |
| 25 (.98) | 35 (1.37) | 62-30-31 • | 62-30-32 • | 62-30-35 • |
| 35 (1.37) | 45 (1.77) | 62-30-21 • | 62-30-22 • | 62-30-25 • |
| 45 (1.77) | 55 (2.16) | 62-30-11 • | 62-30-12 • | 62-30-15 • |

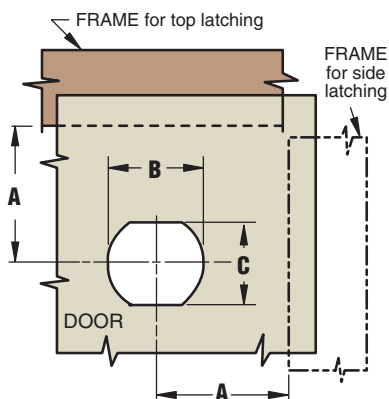
Large



| PART NUMBER | |
|-----------------|----------------|
| Polished chrome | 62-10-603-10 • |
| Brushed chrome | 62-10-603-20 • |

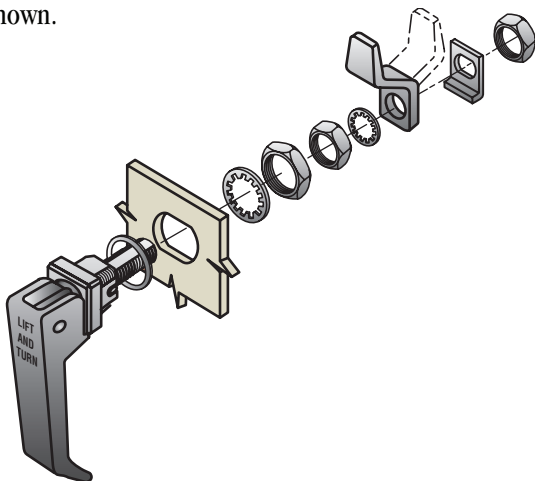
Installation

1. Locate and orient hole with respect to handle in latched position as shown in next step. This hole orientation is preferred for all latching positions.

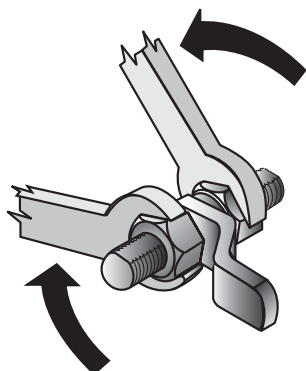


| DIMENSIONS | SERIES | |
|------------|--|--|
| | MEDIUM | LARGE |
| A | 23 ⁺² ₋₁ PAWL FORWARD (.93 ±.06) | 41 MIN. (1.623) |
| | 28 ⁺² ₋₁ PAWL REVERSED (1.10 ±.06) | 47.5 MAX. (1.875) |
| B | ∅ 16.5 ^{+0.1} _{-0.0} (.640 ^{+0.005} _{-.000}) | ∅ 22 ^{+0.2} _{-0.0} (.875 ^{+0.010} _{-.000}) |
| C | 13.7 ^{+0.1} _{-0.0} (.540 ^{+0.005} _{-.000}) | 19 ^{+0.2} _{-0.0} (.750 ^{+0.010} _{-.000}) |

2. Assemble as shown.



3. Pawl should be adjusted to GRIP measurement with the door open and the handle in the LATCHED position. Use two wrenches to tighten.



Material and Finish

HANDLE and SLEEVE: Die-cast zinc (see table).

WASHER and SPRING: 302 Stainless steel, passivated.

O-RING: Buna-N rubber, natural.

LONG PIN and SHAFT: 303 Stainless steel, passivated or passivated with black oxide.

GASKET: Fibre, natural.

PAWL POSITIONING PIN: 303 Stainless steel, natural or with black oxide.

For medium style

BUSHING: Aluminum, natural or with black organic coating.

NUTS: Low carbon steel, zinc plate, chromate plus sealer.

PAWL and PAWL RETAINING CLIP: 1010 Steel, zinc plate, chromate plus sealer.

For large style

PAWL and ACTUATOR: 1010 Steel, zinc alloy plate, bright chromate plus sealer.

WASHER: 303 Stainless steel, passivated.

BUSHING: Aluminum, natural.

MOUNTING NUT: Brass, zinc plate, chromate plus sealer.

LOCKWASHERS: Spring steel, zinc alloy plate, bright chromate plus sealer.

JAM NUTS: Low carbon steel, zinc alloy plate, bright chromate plus sealer.

Product Strength Guidelines

(To assist in your product selection; samples are available for your evaluation.)

Medium style

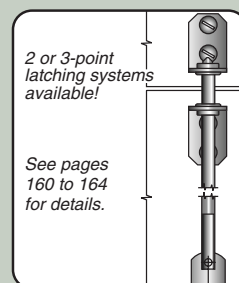
Maximum static load: 670 N (150 lbs.)

Average ultimate load: 1100 N (250 lbs.)

Large style

Maximum static load: 890 N (200 lbs.)

Average ultimate load: 1550 N (350 lbs.)



Note: Contact Southco for information on handles without lettering.

millimeter (inch)
millimeter
(inch)

Dimensions without tolerances are for reference only.