



47 Captive Screws

Styled knob series · 6-32 thread size

- Smooth knob meets **UL-1950**
- Designed for hand operation
- Spring ejected
- Wide variety of sizes, recesses and installation options

Material and Finish

Ferrule:

Press-in: Hardened carbon steel, zinc plate, chromate, plus sealer
 P.C. board style: 300 Series stainless steel, passivated
 Flare-in, floating and snap-in: Aluminum, natural

Knob: Aluminum, natural or black powder coated

Screw: Hardened carbon steel, zinc plated, chromate, plus sealer

Installation Notes

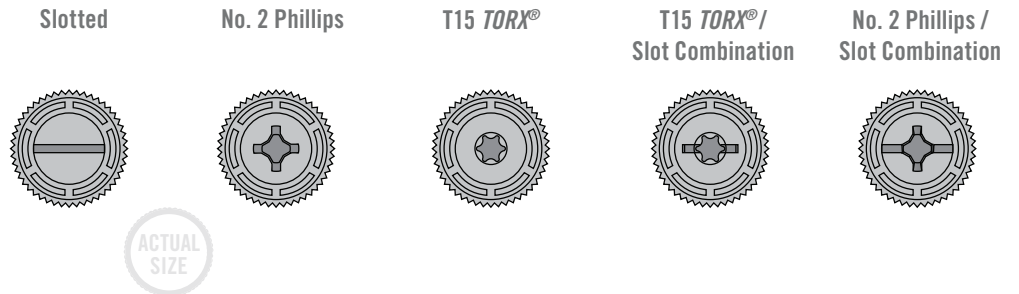
See pages 392 - 393, 497

Notes



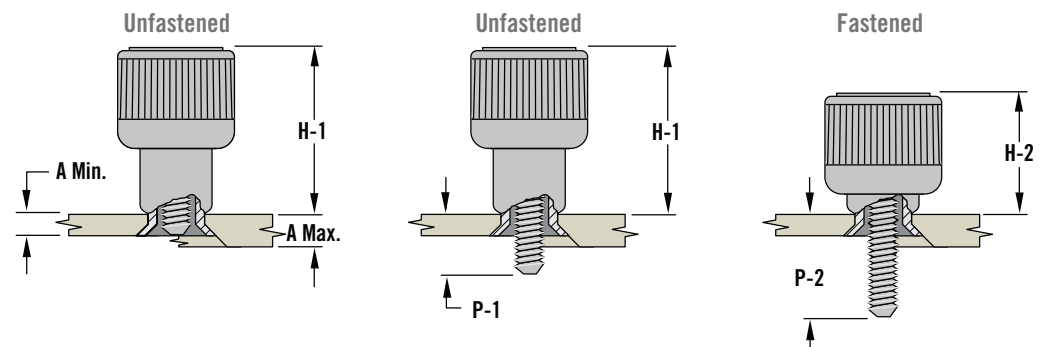
To ensure you receive **SOUTHCO®** quality parts, look for the segmented circle

Recess Styles

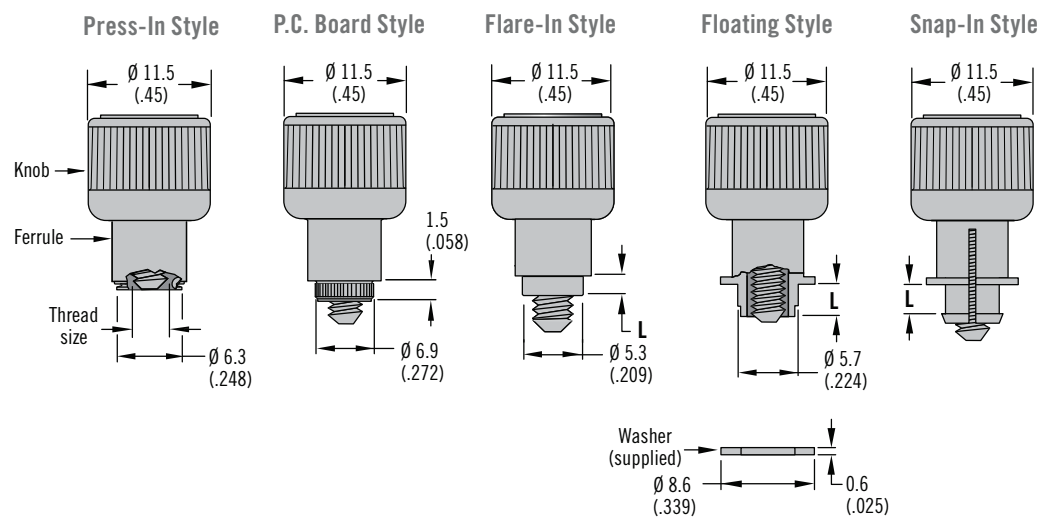


Knob Height and Screw Projection

(Flare-in style shown)



Installation Styles



TORX® is a registered trademark of Acument™ Intellectual Properties, LLC

Dimensions in millimeters (inch) unless otherwise stated

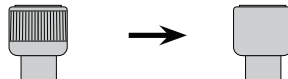
Installation Style	Knob Height		Outer Panel Dimensions		B	Total Float	Flange Length L	Screw Projection Beyond Outer Surface of Panel		Part Number					
	H-1	H-2	A Min.	A Max.				P-1	P-2	Slotted Recess	Phillips Recess	TORX® Recess	TORX® / Slot Combination	Phillips / Slot Combination	
Press-In Style	15.9 (.63)	11.2 (.44)	0.9 (.036)	~	~	0.8 (.03)	~	0.5 (.02)	5.3 (.21)	47-60-201-24	47-60-221-24	47-60-241-24	47-60-261-20	47-60-281-24	
								2.1 (.08)	6.9 (.27)	47-61-201-24	47-61-221-24	47-61-241-24	47-61-261-20	47-61-281-24	
								3.7 (.15)	8.5 (.33)	47-62-201-24	47-62-221-24	47-62-241-24	47-62-261-20	47-62-281-24	
								5.3 (.21)	10.1 (.40)	47-63-201-24	47-63-221-24	47-63-241-24	47-63-261-20	47-63-281-24	
P.C. Board Style	14.8 (.58)	10 (.39)	1.6 (.061)	~	~	0.8 (.03)	~	1.4 (.06)	6.1 (.24)	47-65-201-34	47-65-221-34	47-65-241-34	47-65-261-30	47-65-281-34	
Flare-In Style	15.3 (.60)	10.4 (.41)	1.5 (.058)	3.2 (.125)	0.4 (.015)	0.8 (.03)	1.8 (.07)	1.1 (.04)	6 (.24)	47-10-202-14	47-10-222-14	47-10-242-14	47-10-262-10	47-10-282-14	
			3.2 (.125)	4.8 (.189)	1.6 (.062)		3.4 (.135)	2.7 (.11)	7.6 (.30)	47-10-204-14	47-10-224-14	47-10-244-14	47-10-264-10	47-10-284-14	
			4.8 (.189)	6.4 (.250)	3.2 (.125)		5 (.197)	4.3 (.17)	9.2 (.36)	47-10-206-14	47-10-226-14	47-10-246-14	47-10-266-10	47-10-286-14	
			6.4 (.250)	7.9 (.312)	4.8 (.189)		6.1 (.26)	5.9 (.23)	10.8 (.43)	47-10-208-14	47-10-228-14	47-10-248-14	47-10-268-10	47-10-288-14	
			1.5 (.058)	3.2 (.125)	0.4 (.015)		1.8 (.07)	2.7 (.11)	7.6 (.30)	47-11-202-14	47-11-222-14	47-11-242-14	47-11-262-10	47-11-282-14	
			3.2 (.125)	4.8 (.189)	1.6 (.062)		3.4 (.135)	4.3 (.17)	9.2 (.36)	47-12-202-14	47-12-222-14	47-12-242-14	47-12-262-10	47-12-282-14	
			4.8 (.189)	6.4 (.250)	3.2 (.125)		5 (.197)	5.9 (.23)	10.8 (.43)	47-13-202-14	47-13-222-14	47-13-242-14	47-13-262-10	47-13-282-14	
			6.4 (.250)	7.9 (.312)	4.8 (.189)		6.1 (.26)	5.9 (.23)	10.8 (.43)	47-11-204-14	47-11-224-14	47-11-244-14	47-11-264-10	47-11-284-14	
			1.6 (.062)	3.2 (.125)	0.4 (.015)		3.4 (.135)	4.3 (.17)	9.2 (.36)	47-12-204-14	47-12-224-14	47-12-244-14	47-12-264-10	47-12-284-14	
			3.2 (.125)	4.8 (.189)	1.6 (.062)		5 (.197)	5.9 (.23)	10.8 (.43)	47-11-206-14	47-11-226-14	47-11-246-14	47-11-266-10	47-11-286-14	
			4.8 (.189)	6.4 (.250)	3.2 (.125)		5 (.197)	5.9 (.23)	10.8 (.43)	47-11-206-14	47-11-226-14	47-11-246-14	47-11-266-10	47-11-286-14	
			Floating Style	15.3 (.60)	10.6 (.42)		~	0.8 (.031)	2.1 (.083)	2.2 (.09)	2.9 (.113)	2.4 (.09)	7.2 (.28)	47-10-210-14	47-10-230-14
0.8 (.031)	1.6 (.063)	2.9 (.114)				4 (.16)	8.8 (.35)	47-11-210-14	47-11-230-14		47-11-250-14	47-11-270-10	47-11-290-14		
1.6 (.063)	2.4 (.094)	3.7 (.146)				5.6 (.22)	10.4 (.41)	47-12-210-14	47-12-230-14		47-12-250-14	47-12-270-10	47-12-290-14		
~	0.8 (.031)	2.9 (.114)				2.9 (.114)	2.4 (.09)	7.2 (.28)	47-10-211-14		47-10-231-14	47-10-251-14	47-10-271-10	47-10-291-14	
0.8 (.031)	1.6 (.063)	2.9 (.114)				3.7 (.144)	4 (.16)	8.8 (.35)	47-11-211-14		47-11-231-14	47-11-251-14	47-11-271-10	47-11-291-14	
1.6 (.063)	2.4 (.094)	3.7 (.146)				4.5 (.176)	5.6 (.22)	10.4 (.41)	47-12-211-14		47-12-231-14	47-12-251-14	47-12-271-10	47-12-291-14	
~	0.8 (.031)	2.9 (.114)				3.7 (.144)	4 (.16)	8.8 (.35)	47-10-212-14		47-10-232-14	47-10-252-14	47-10-272-10	47-10-292-14	
0.8 (.031)	1.6 (.063)	2.9 (.114)				4.5 (.176)	5.6 (.22)	10.4 (.41)	47-11-212-14		47-11-232-14	47-11-252-14	47-11-272-10	47-11-292-14	
1.6 (.063)	2.4 (.094)	3.7 (.146)				4.5 (.176)	5.6 (.22)	10.4 (.41)	47-12-212-14		47-12-232-14	47-12-252-14	47-12-272-10	47-12-292-14	
~	0.8 (.031)	2.9 (.114)				3.7 (.146)	4.5 (.176)	5.6 (.22)	10.4 (.41)		47-11-213-14	47-11-233-14	47-11-253-14	47-11-273-10	47-11-293-14
0.8 (.031)	1.6 (.063)	2.9 (.114)				3.7 (.146)	4.5 (.176)	5.6 (.22)	10.4 (.41)		47-12-213-14	47-12-233-14	47-12-253-14	47-12-273-10	47-12-293-14
Snap-In Style	15.3 (.60)	10.6 (.42)				0.5 (.020)	1 (.039)	2 (.079)	0.8 (.03)		1.1 (.044)	0.8 (.03)	5.6 (.22)	47-60-210-14	47-60-230-14
			0.5 (.020)	1 (.039)	2 (.079)	2.4 (.09)	7.2 (.28)	47-61-210-14		47-61-230-14	47-61-250-14	47-61-270-10	47-61-290-14		
			0.5 (.020)	1 (.039)	2 (.079)	4 (.16)	8.8 (.35)	47-62-210-14		47-62-230-14	47-62-250-14	47-62-270-10	47-62-290-14		
			0.5 (.020)	1 (.039)	2 (.079)	5.6 (.22)	10.4 (.41)	47-63-210-14		47-63-230-14	47-63-250-14	47-63-270-10	47-63-290-14		
			0.5 (.020)	1 (.039)	2 (.079)	2.4 (.09)	7.2 (.28)	47-60-212-14		47-60-232-14	47-60-252-14	47-60-272-10	47-60-292-14		
			0.5 (.020)	1 (.039)	2 (.079)	4 (.16)	8.8 (.35)	47-61-212-14		47-61-232-14	47-61-252-14	47-61-272-10	47-61-292-14		
			0.5 (.020)	1 (.039)	2 (.079)	5.6 (.22)	10.4 (.41)	47-62-212-14		47-62-232-14	47-62-252-14	47-62-272-10	47-62-292-14		
			0.5 (.020)	1 (.039)	2 (.079)	2.4 (.09)	7.2 (.28)	47-60-213-14		47-60-233-14	47-60-253-14	47-60-273-10	47-60-293-14		
			0.5 (.020)	1 (.039)	2 (.079)	4 (.16)	8.8 (.35)	47-61-213-14		47-61-233-14	47-61-253-14	47-61-273-10	47-61-293-14		
			0.5 (.020)	1 (.039)	2 (.079)	5.6 (.22)	10.4 (.41)	47-62-213-14		47-62-233-14	47-62-253-14	47-62-273-10	47-62-293-14		
			0.5 (.020)	1 (.039)	2 (.079)	2.4 (.09)	7.2 (.28)	47-60-214-14		47-60-234-14	47-60-254-14	47-60-274-10	47-60-294-14		
			0.5 (.020)	1 (.039)	2 (.079)	4 (.16)	8.8 (.35)	47-61-214-14		47-61-234-14	47-61-254-14	47-61-274-10	47-61-294-14		

Part numbers in shaded rows (shown in table) are fully retracting in minimum panel thickness



To add a black powder coated finish, change the part number from the table as shown:

- Change 1 to 5: 47-80-102-14
47-80-102-54
- Change 2 to 6: 47-80-102-24
47-80-102-64
- Change 3 to 7: 47-80-102-34
47-80-102-74



For a smooth knob, change the part number from the table as shown:

- Change 0 to 1: 47-90-161-20
47-90-161-21
- Change 4 to 5: 47-90-101-24
47-90-101-25

Part Number

See table
All screw part numbers shown in table are for a natural knob finish and a knurled knob
For black finish and smooth knob options, minimums may apply

