

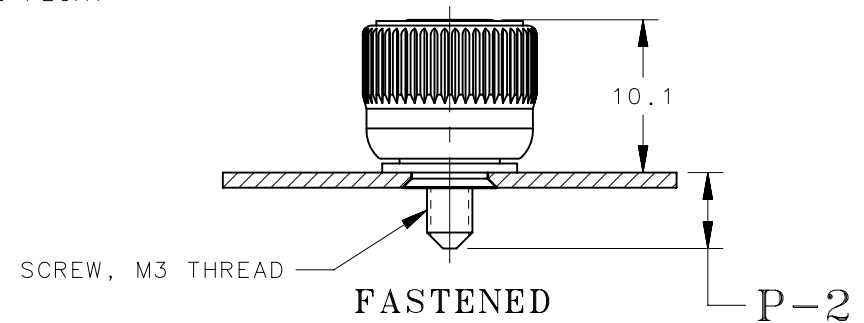
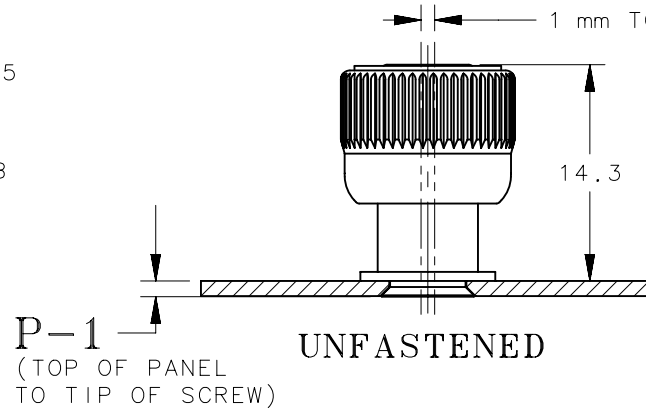
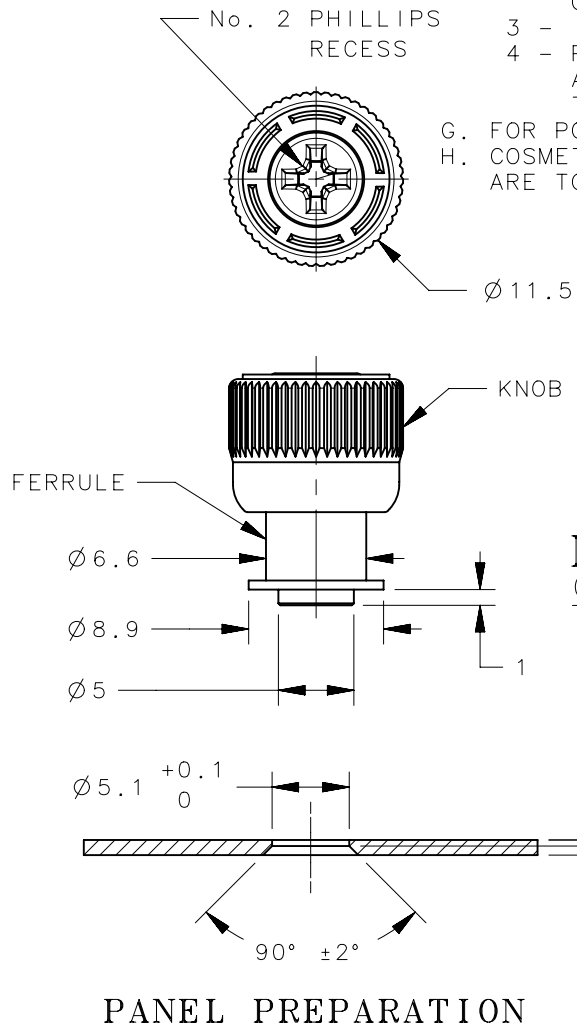
NOTES:

- A. SAME AS STANDARD 47-80-121-10 EXCEPT REDESIGNED FOR MORE FLOAT AND STROKE, INCREASED FERRULE DIAMETER, AND No. 2 PHILLIPS RECESS.
- B. MATERIAL AND FINISH:  
 KNOB: 6000 SERIES ALUMINUM, NATURAL  
 SCREW: 300 SERIES STAINLESS STEEL, PASSIVATED  
 FERRULE: 300 SERIES STAINLESS STEEL, PASSIVATED  
 SPRING: 300 SERIES STAINLESS STEEL, PASSIVATED
- C. KNOB AND SCREW ARE SPRING LOADED OUTWARD, AS SHOWN BELOW.
- D. MAXIMUM RECOMMENDED TIGHTENING TORQUE OF 60 N-cm.
- E. RoHS COMPLIANT.
- F. INSTALLATION:  
 1 - PREPARE HOLE IN PANEL, THEN COUNTERSINK ACCORDING TO THE PANEL PREPARATION BELOW.  
 2 - PLACE INSTALLATION TOOL PART No. 47-104 IN SUITABLE PRESS. ONLY LIGHT PRESSURE WILL BE REQUIRED.  
 3 - INSERT SCREW ASSEMBLY INTO PREPARED HOLE IN PANEL.  
 4 - PLACE WORK UNDER PRESS, CENTER INSTALLATION TOOL OVER SCREW THREADS AND FLARE FERRULE INTO COUNTERSINK IN PANEL. ONLY USE LIGHT PRESSURE TO FLARE FERRULE.
- G. FOR POWDER COAT OPTIONS, SEE DRAWING J-47-99-1015.
- H. COSMETIC SPECIFICATION: ALL SURFACES (UNLESS OTHERWISE SPECIFIED) ARE TO BE PER SOUTHCO SPECIFICATION S-121-02, CLASS B.

REVISION HISTORY			
REV	DATE	BY	DESCRIPTION
F	14MAY2014	MJS/TVA	PRN: P2014-0940



SCALE 1:1



0.4 ± 0.1

1.5

0.8

PANEL THICKNESS

PART NUMBER 47-99-944-1F1 SHOWN

47-99-944-4F1	5.5	9.5
47-99-944-3F1	4	8
47-99-944-2F1	2.5	6.5
47-99-944-1F1	1	5
<b>PART NUMBER</b>	<b>P-1</b>	<b>P-2</b>

THIRD ANGLE PROJECTION				<b>southco</b> <sup>®</sup> CONNECT • CREATE • INNOVATE	
MILLIMETERS [IN]					
TOLERANCES UNLESS OTHERWISE NOTED		DESCRIPTION			
ALL DIMENSIONS WITHOUT TOLERANCES ARE FOR REFERENCE ONLY.		Captive Fastener			
PROPRIETARY ITEM		SIZE		DWG NO.	
EXCEPT FOR USES EXPRESSLY GRANTED IN WRITING, INFORMATION DISCLOSED HEREON IS CONFIDENTIAL AND ALL RIGHTS, PATENT AND OTHERWISE, ARE RESERVED BY SOUTHCO, INC.		A4		NX J-47-99-944	
PER ASME Y14.5M-1994		DRAWN BY		DATE	
		DLH		29MAY2008	
		SCALE		SHEET	
		2:1		1 OF 1	