

southco

PROPRIETARY ITEM - EXCEPT FOR USES EXPRESSLY GRANTED IN WRITING INFORMATION DISCLOSED HEREON IS CONFIDENTIAL AND ALL RIGHTS PATENT AND OTHERWISE ARE RESERVED BY SOUTHCO, INC.

SOUTHCO No. 47 CAPTIVE FASTENER
M3 THREAD, FLARE-IN STYLE

DATE: 08JUL2002
DRAWN: DLH
CHKD:
SCALE: 2:1
DRAWING NUMBER: J-47-1-M3

REV	DATE	DRAWN/CHKD	DESCRIPTION	PART NUMBER	SCREW PROJECTION		PANEL THICKNESS		B	L
					P-1	P-2	A, MIN	A, MAX		
A	13FEB2004	DLH/AJH	PRN: P2004-0148	47-80-1X1-YZ	0.8	4.0				
B	08MAR2004	DLH/AJH	PRN: P2004-0246	47-81-1X1-YZ	2.5	5.7				
C	30OCT2006	AJH/MDY	PRN: P2006-1511	47-82-1X1-YZ	4.0	7.2	0.8	1.5	0.4	1
D	22NOV2013	CMS/TVA	PRN: P2013-2327	47-83-1X1-YZ	5.6	8.8				
				47-80-1X2-YZ	1.5	4.8				
				47-81-1X2-YZ	3.3	6.4				
				47-82-1X2-YZ	4.8	7.9	1.5	2.5	0.4	1.8
				47-83-1X2-YZ	6.4	9.4				
				47-80-1X3-YZ	2.5	5.7				
				47-81-1X3-YZ	4.0	7.2	2.5	4	0.8	2.6
				47-82-1X3-YZ	5.6	8.8				
				47-80-1X5-YZ	4.0	7.2				
				47-81-1X5-YZ	2.5	5.7	4	5.6	2.4	4.2
				47-80-1X7-YZ	5.6	8.8	5.6	7.1	4	5.8

MILLIMETERS
ALL DIMENSIONS WITHOUT TOLERANCES ARE FOR REFERENCE ONLY.
THIRD ANGLE PROJECTION
A3 PAPER SIZE

MATERIAL AND FINISH:
KNOB: 6000 SERIES ALUMINUM, NATURAL OR BLACK POWDER COATED
SCREW: 400 SERIES STAINLESS STEEL, PASSIVATED; OR HARDENED CARBON STEEL, ZINC PLATE, CHROMATE PLUS SEALER (SEE "Z" TABLE) (NOTE: KNOB AND TOP OF SCREW AVAILABLE WITH POWDER COATING; SEE "Y" TABLE)
FERRULE: 6000 SERIES ALUMINUM, NATURAL
SPRING: 300 SERIES STAINLESS STEEL, PASSIVATED

"Z" KNOB TYPE AND SCREW MATERIAL

"X" SCREW RECESS

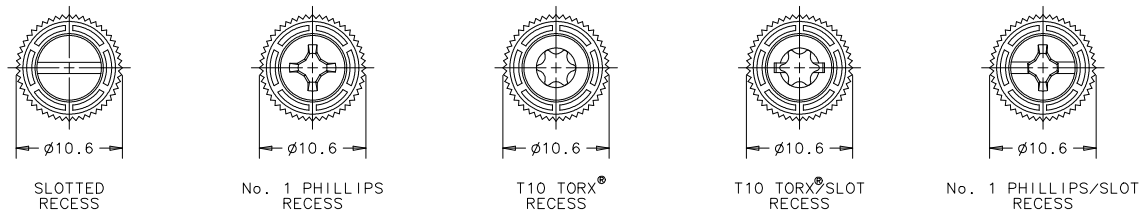
- 0 - SLOTTED
- 2 - No.1 PHILLIPS
- 4 - T10 TORX
- 6 - T10 TORX/SLOT COMBINATION
- 8 - No.1 PHILLIPS/SLOT COMBINATION

"Y" FINISH ON KNOB & SCREW HEAD

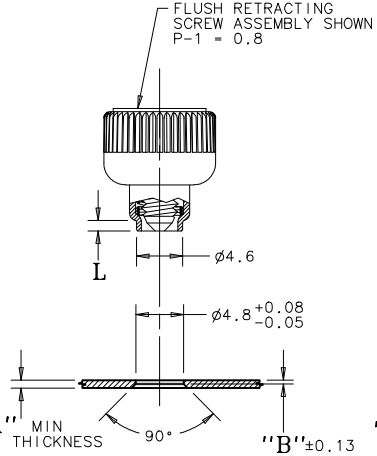
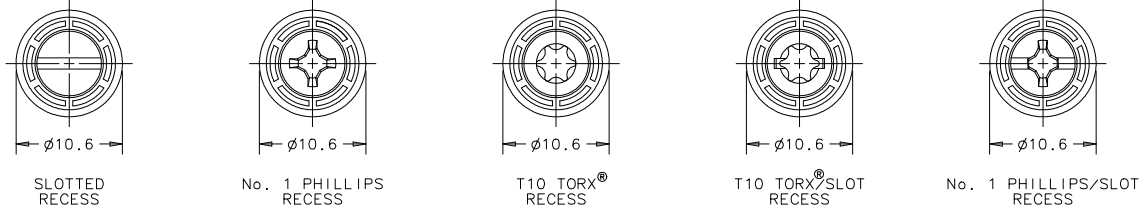
- 1 - BRIGHT
- 4 - CUSTOM COLOR. SEE J-47-0-3 FOR ADDITIONAL SUFFIX
- 5 - BLACK POWDER COATED

KNOB	SCREW MATERIAL	RECESS	
		SLOTTED TORX PHILLIPS/SLOT	TORX/SLOT
KNURLED	STAINLESS STEEL	0	N/A
SMOOTH	STAINLESS STEEL	1	N/A
KNURLED	STEEL	4	0
SMOOTH	STEEL	5	1

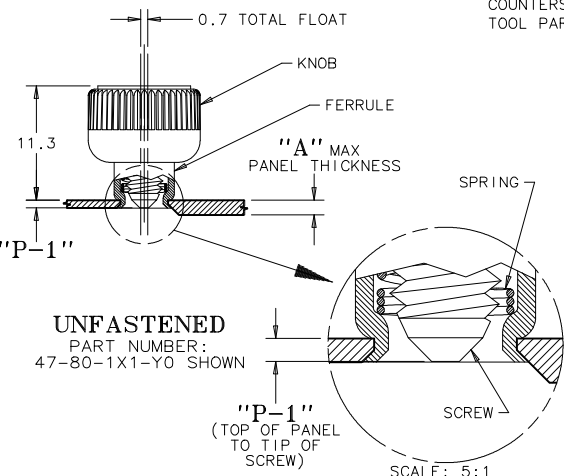
KNURLED KNOBS



SMOOTH KNOBS

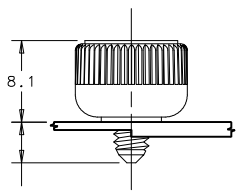


NOTE: KNOB AND SCREW ARE SPRING LOADED OUTWARD, AS SHOWN BELOW



TO INSTALL FASTENER:

1. DRILL, THEN COUNTERSINK ACCORDING TO THE REQUIRED "B" DIMENSION.
2. INSERT FASTENER AND FLARE INTO COUNTERSINK WITH INSTALLATION TOOL PART NUMBER 47-104.



PANEL PREPARATION
PART NUMBER: 47-80-1X1-Y0 SHOWN

UNFASTENED
PART NUMBER: 47-80-1X1-Y0 SHOWN

FASTENED
PART NUMBER: 47-80-1X1-Y0 SHOWN

"P-1" (TOP OF PANEL TO TIP OF SCREW)

SCALE: 5:1

TORX IS A REGISTERED TRADEMARK OF THE CAMCAR DIVISION OF TEXTRON, INC.