



# 02 Push-to-Close Latch

Pull-to-open · Magnetic catch · Snap-in

- Snap-in installation
- Optional side mount bracket

### Material and Finish

Housing: Polypropylene, black  
 Pole pieces: Steel, zinc plated  
 Magnet: Barium ferrite

### Performance Details

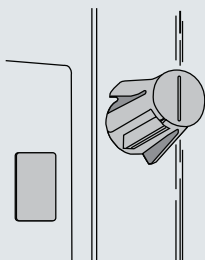
Size	Average breakaway force	Standard deviation
Small 400 series	14 N (3.1 lbf)	2.2 N (.49 lbf)
Large 600 series	49 N (11 lbf)	6.4 N (1.4 lbf)

Operating temperature range:  
 -30°C (-20°F) to 115°C (240°F)

Flammability rating: UL94-HB

### Installation Notes

For non-ferrous applications.  
 Screw-mounted and adhesive backed strikes are available.  
 Order separately. See page 146.



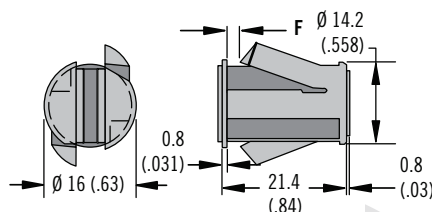
### Notes

Performance values shown are supplied as a general guide only

### Part Number

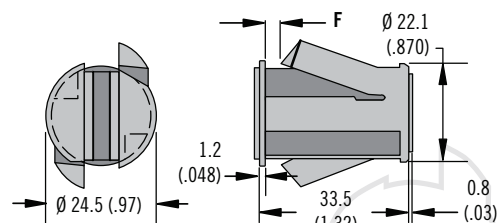
See table

### Small - 400 Series



ACTUAL SIZE

### Large - 600 Series

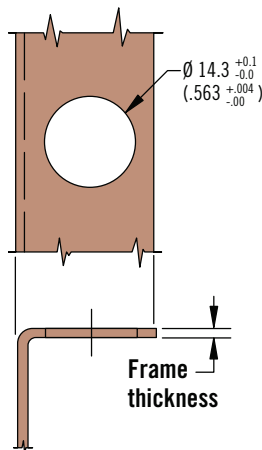


ACTUAL SIZE

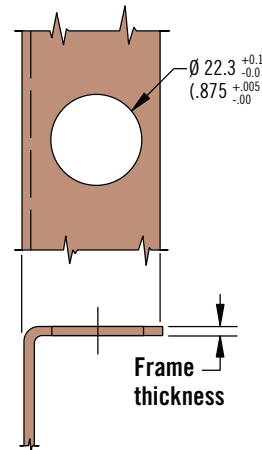
### Installation

#### 1. Drill or punch hole

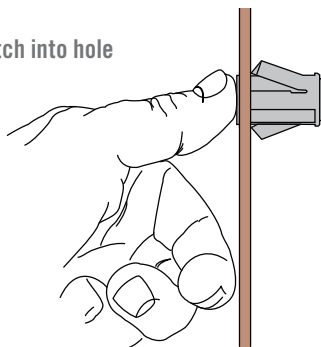
##### Small Size



##### Large Size



#### 2. Snap catch into hole



Size	F	Frame Thickness		Magnet Part Number
		Min.	Max.	
Small	0.8 (.030)	0.5 (.020)	2 (.080)	02-20-411-10
	2.3 (.090)	2 (.080)	3.5 (.140)	02-20-412-10
	3.8 (.150)	3.5 (.140)	5 (.200)	02-20-413-10
Large	0.5 (.020)	0.5 (.020)	2 (.080)	02-20-611-10
	2 (.080)	2 (.080)	3.5 (.140)	02-20-612-10
	3.5 (.140)	3.5 (.140)	5 (.200)	02-20-613-10

Dimensions in millimeters (inch) unless otherwise stated