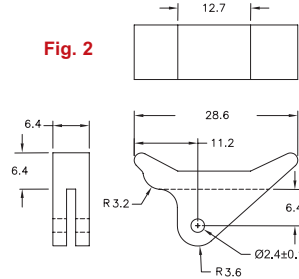
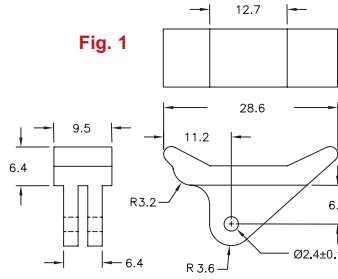
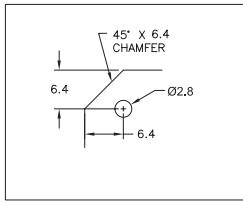
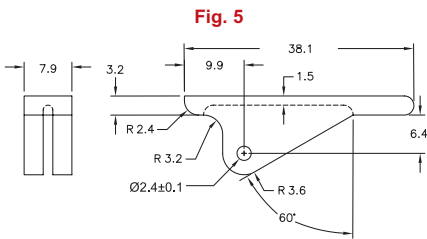
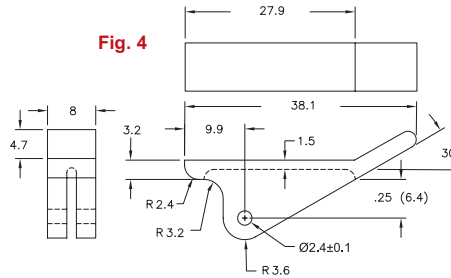
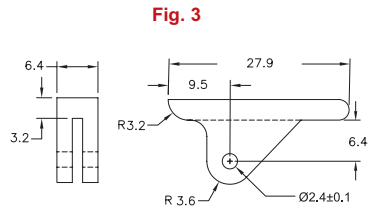


All RCP Series Parts  
Mount Into Hole Below  
See Table for Panel  
Thicknesss Accepted



**B**

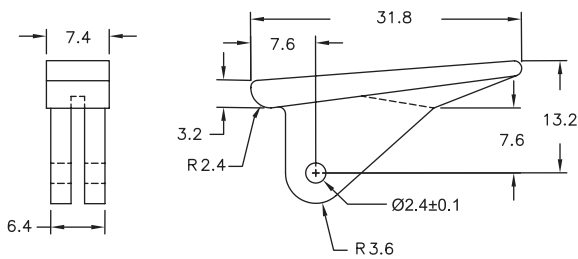


**Material: UL94 V2 Nylon 6/6, RMS-48 Color: White**

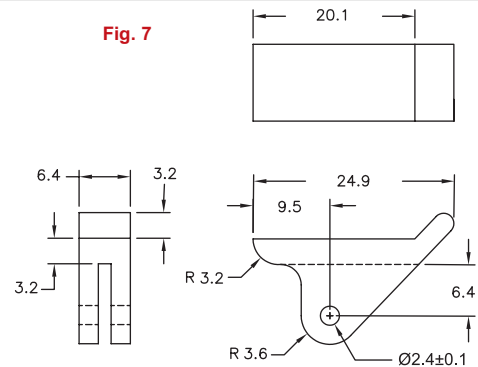
**Standard Pack: 500/Bag**

Part No.	Accepts PCB Thickness	Fig.	Installation pin (Supplied), RMS-224
RCP-06	1.6	1	RRP-250
RCP-09	2.4		
RCP-26	1.6	2	RRP-312
RCP-36		3	
RCP-46		4	
RCP-56		5	
RCP-66	2.4	6	RRP-250
RCP-86		7	
RCP-89	2.4		

**Fig. 6**



**Fig. 7**



Material: 302 Stainless Steel, RMS-320		Standard Pack: 100/Bag
Part No.	"D"	"L"
RRP-250	2.4	6.4
RRP-312		8
RRP-375	3.2	9.5
Round Roll Pins for use with the following card ejectors, inserters/extractors:		
RRP-250	RRP-312	RRP-375
RCP-06	RCP-46	R1209-062
RCP-09	RCP-56	R1209-093
RCP-26	R11073-062	
RCP-36	R11073-093	
RCP-66	R11073-125	
RCP-86	R1107310-062	
RCP-89	R1107310-093	
R1001-062	R1107310-125	
R1002-093		
R1007-062		
R110710-062		

**RRP**  
PCB Inserter/Extractor  
Installation Pin

