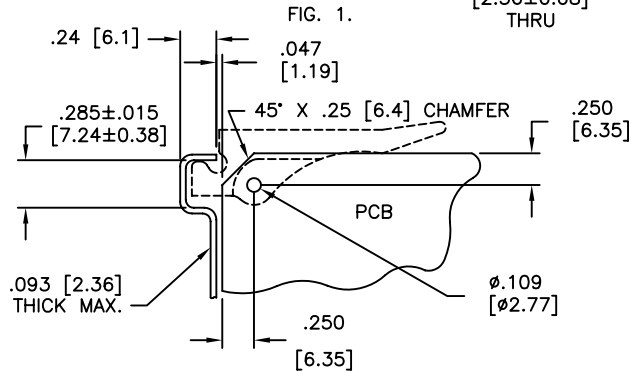
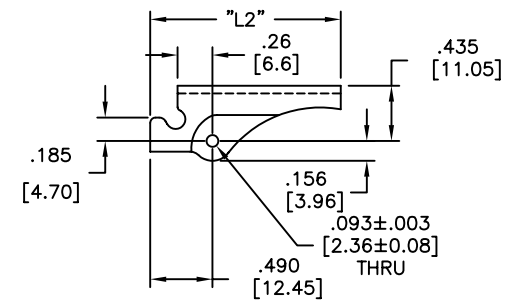
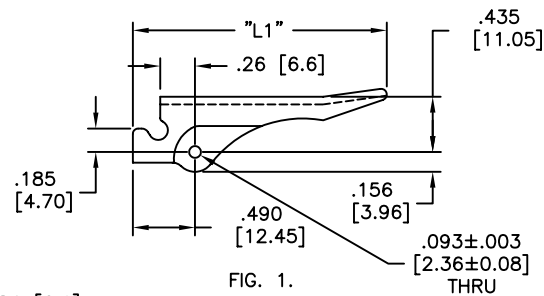
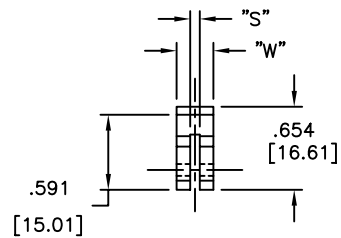


PART NO.	"S"	"W"	"L1"	"L2"	PCB THICKNESS	FIG. NO.
R1107-062	.075 (1.9)	.290 (7.4)	2.0 (50.8)	-	.062 (1.6)	1.
R11073-062	.075 (1.9)	.350 (8.9)	2.0 (50.8)	-	.062 (1.6)	
R11073-093	.100 (2.5)	.350 (8.9)	2.0 (50.8)	-	.093 (2.4)	
R110710-062	.075 (1.9)	.290 (7.4)	-	1.5 (38.1)	.062 (1.6)	2.
R1107310-062	.075 (1.9)	.350 (8.9)	-	1.5 (38.1)	.062 (1.6)	
R1107310-093	.100 (2.5)	.350 (8.9)	-	1.5 (38.1)	.093 (2.4)	



NOTES:

1. MATERIAL: NYLON 6/6 UL 94 V-0, GLASS FILLED (RMS-222).
2. COLOR: NATURAL.

H	SEE CO 200041 FOR CHANGES	SK 09.28.07
G	SEE ECN #1264 FOR CHANGES	SK 12.12.06
F	SEE ECN #1096 FOR CHANGES	SK 11.09.05
E	SEE ECN #933 FOR CHANGES	SK 02.02.05
D	ADDED ".26" DIM.; ADDED THICKNESS NOTE CHANGED "PANEL" TO "PCB" IN TABLE	SJ 01.18.02
C	CHANGED FILE NUMBER	SM 05.16.01
B	ADDED FIG. NO.; CHANGED FILE NO. AND DIM "S" POSITION	SM 04.10.01
A	METRIC EQUIVALENTS CORRECTED	PB 08.11.95
REV	DESCRIPTION	ENGR DATE

TITLE: INSERTER/EXTRACTOR				DWG IN IN(mm)	QR
TOLERANCES UNLESS NOTED .XX=±.010 .XXX=±.005 FRAC=1/64 ANG=1°	FILE # R1107	DWN: J.B.	APP:	FINAL	
	MAT'L: SEE NOTES	DT: 04-15-97	DT:	PART #	PRINT TYPE
	RE: RICHCO, INC.	RICHCO INC. PO BOX 804238, CHICAGO, 60680 (773) 539-4060		R1107 SERIES	CA