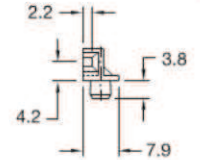
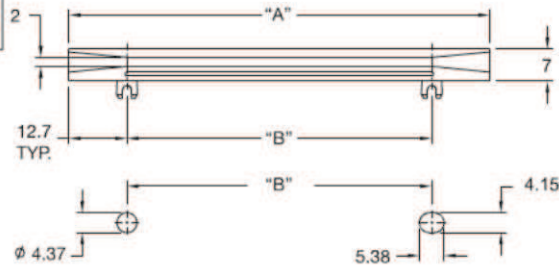


CARD GUIDES & PULLERS

Material: UL94 V0 Nylon 6/6, RMS-66, Color: Black				
Standard Pack: 500/Bag				
Part No.	"A"	"B"	Accepts PCB Thickness	Mounting Hole Panel Thickness
RSSHG-201-165	50.8	25.4	1.6	1.2 - 2.3
RSSHG-251-165	63.5	38.1		
RSSHG-301-165	76.2	50.8		
RSSHG-351-165	88.9	63.5		
RSSHG-401-165	101.6	76.2		
RSSHG-451-165	114.3	88.9		
RSSHG-501-165	127	101.6		
RSSHG-601-165	152.4	127		

RSSHG
Single Sided Horizontal
Card Guide

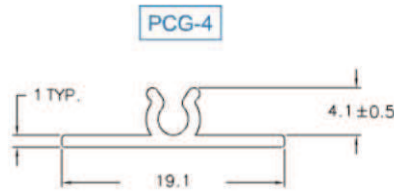
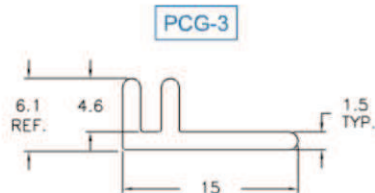
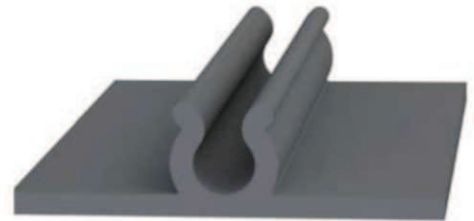


Mounts Into Holes Above

B

Color: Grey			
Standard Pack: 25m; 25 pieces x 1,219mm lengths			
Part No.	Material	Adhesive	Accepts PCB Thickness
PCG-3-48	Rigid PVC, RMS-193	-	1.6
PCG-3A4-48		RMS-93	
PCG-4A4-48			

PCG
Printed Circuit Guide



Color: Black		
Standard Pack: 25m; 25 pieces x 1,219mm lengths		
Part No.	Material	Adhesive
BMS-S-48	UL94 V0 PVC, RMS-488	-
BMS-SA5-48		Acrylic, RMS-359

BMS
Board Mounting Strip

