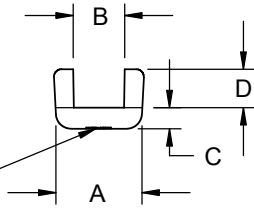
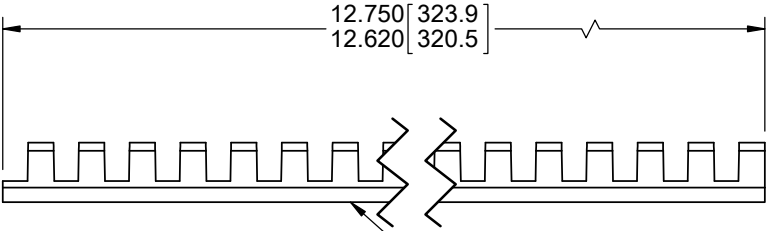
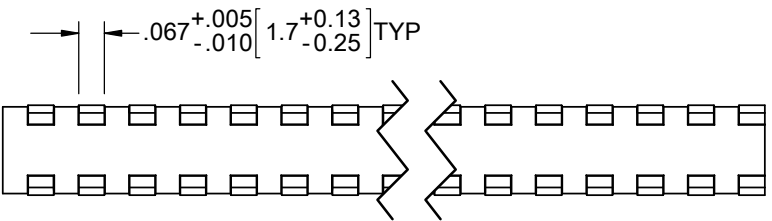


MS21266 #	RICHCO P/N	SHEET THICKNESS (REF)	A +.015 -.005	B +.015 -.005	C +.015 -.005	D +.020 -.005
MS21266-1N	MGS-1-01	.015-.052 [0.4-1.3]	.150 [3.8]	.056 [1.4]	.055 [1.4]	.100 [2.5]
MS21266-2N	MGS-2-01	.052-.085 [1.3-2.2]	.175 [4.4]	.090 [2.3]		
MS21266-3N	MGS-3-01	.085-.128 [2.2-3.3]	.220 [5.6]	.131 [3.3]		
MS21266-4N	MGS-4-01	.128-.192 [3.3-4.9]	.325 [8.3]	.195 [5]	.070 [1.8]	.160 [4.1]
MS21266-5N	MGS-5-01	.192-.255 [4.9-6.5]	.385 [9.8]	.260 [6.6]		
MS21266-6N	MGS-6-01	.255-.318 [6.5-8.1]	.445 [11.3]	.320 [8.1]	.075 [1.9]	.180 [4.6]
MS21266-8N	MGS-8-01	.380-.510 [9.7-13]	.640 [16.3]	.515 [13.1]		



MS PART NUMBER

NOTES:
1. MATERIAL: NYLON 6/6 UL 94 V-2 (RMS-01)
2. COLOR: NATURAL

REV.			TITLE: MOLDED GROMMET STRIP			UNITS= IN [mm]		FINAL	
E	ADDED BACK MGS-8, SEE CO 200739	SK 12/02/2011	FILE #: MGS	DWN: D.Z.	APP: D.Z.	PART #		PRINT TYPE	
D	REMOVED -8N CO#200722	SK 10.07.2011	SHEET: 1 OF 1	SHEET SIZE: A	DT: OCT/05/2011	CHKD: S.K.	SEE TABLE		CA
C	ADDED -8N AND REDONE IN SOLIDWORKS, CO#200721	SK 10.06.2011	RE: RICHCO INC.		RICHCO, INC.		WWW.RICHCO-INC.COM		
B	UPDATED PRINT	SM 03.12.2002							
A	CHANGED FILE NO. AND TITLE BLOCK	SM 06.19.2001							
REV.	DESCRIPTION	ENGR. DATE							

CREATED USING SOLIDWORKS
 TOLERANCES UNLESS NOTED
 .XX=±.010
 .XXX=±.005
 FRAC.=±1/64
 ANG.=±1°