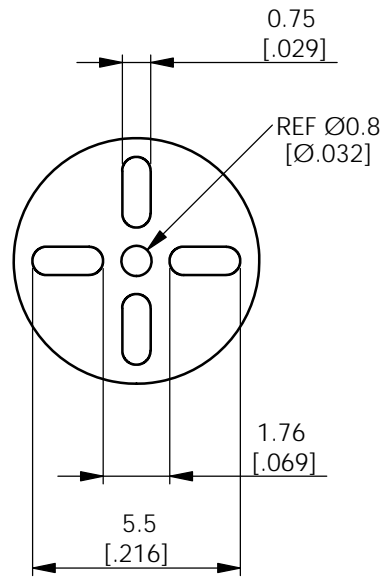
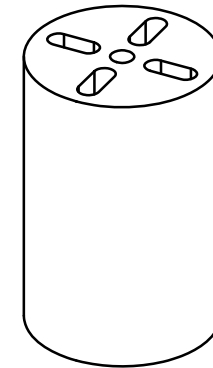
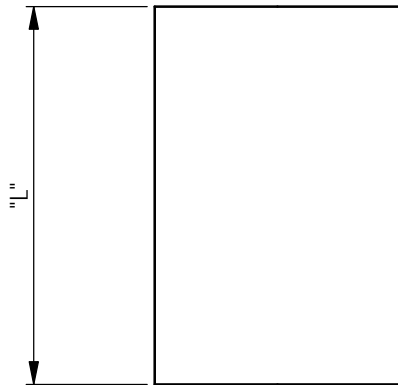


AVAILABLE BY SPECIAL ORDER NAFTA REGION ONLY

REV.	MODIFICATION.	DATE	DRN
01	NEW DWG	25/05/01	JPM
02	SCN04-093	25/05/01	OW
03	SCN04-096	25/05/01	OW
04	SCN04-100	14/10/04	OW
05	ECN05-021	26/01/05	OW
06	CO-2010553	09/02/09	OW
07	CO-2010973	17/08/10	SF
08	CO-2011241	06/02/12	SF



Ø6.50 ±0.10
[Ø.256]

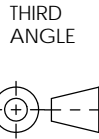


ALTERNATE UNITS FOR REFERENCE ONLY

INFORMATION CONTAINED IN THIS DOCUMENT IS CONFIDENTIAL TO RICHCO INTERNATIONAL Co. Ltd. AND MAY NOT BE DISCLOSED OR REPRODUCED IN WHOLE OR PART WITHOUT THEIR WRITTEN CONSENT.

RICHCO, INC.
WWW.RICHCO-INC.COM

ALL DIMENSIONS IN mm
GENERAL TOLERANCES ±0.25
UNLESS OTHERWISE STATED
1 DECIMAL PLACE ±
2 DECIMAL PLACES ±
ANGULAR ±1°



MATERIAL:
PVC (RMS-388)

COLOUR:
BLACK

DESCRIPTION:
LED MOUNTS

PART No:
LEDM-3-XX

DRG No:
786-9020

NPR No:

SHEET SIZE A4

DRN
OW

DATE
14/10/04

CHKD
NJB

DATE
14/10/04

SCALE
NTS

SHEET No.
1 OF 1

- NOTES:
1) FOR USE WITH 5mm, T-1 3/4 LEDS.
2) PARTS AVAILABLE IN 1MM INCREMENTS.
3) SPECIAL LENGTHS AVAILABLE BY SPECIAL ORDER.

PART No.	LENGTH	DRN	DATE	CHKD	DATE	SCALE	SHEET No.
LEDM-3-02 - LEDM-3-30	2.0mm - 30mm	OW	14/10/04	NJB	14/10/04	NTS	1 OF 1