

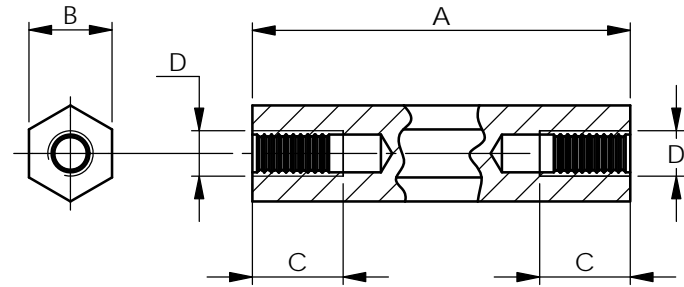
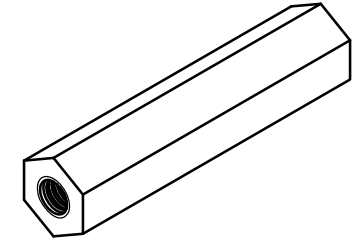
PART No	A	B	C	D
301305041152	5	5	2.5	M3
301305141152	6	5.5		
301306041152	8	5	3	
301308041152	9	5.5	4	
301308141152	10	5	4.5	
301309041152	12	5.5	5	
301310041152	13	5	6	
301310141152	14	5.5	6.5	
301312041152	15	5	7	
301312141152	16	5.5	7.5	
301313041152	18	5	8	
301313041152	18	5.5	9	
301314041152	20	5	10	
301315041152	20	5.5		
301315141152	25	5		
301316041152	25	5.5		
301318041152	30	5		
301318141152	30	5.5		
301320041152	35	5		
301320141152	35	5.5		
301325041152	40	5		
301325141152	40	5.5		
301330041152	45	5	M5	
301330141152	45	5.5		
301335041152	50	5		
301335141152	50	5.5		
301340041152	55	5		
301340141152	55	5.5		
301345041152	60	5		
301350041152	60	5.5		
301350141152	60	5		
301355041152	60	5.5		
301360041152	70	5		
301360141152	70	5.5		

PART No	A	B	C	D
301405041152	5	7	2.5	M4
301408041152	8		4	
301409041152	9		4.5	
301410041152	10		5	
301411041152	11		5.5	
301412041152	12		6	
301413041152	13		6.5	
301414041152	14		7	
301415041152	15		7.5	
301418041152	18		9	
301420041152	20		10	
301425041152	25			
301430041152	30			
301435041152	35			
301440041152	40			
301445041152	45			
301450041152	50			
301455041152	55			
301460041152	60			
301465041152	65			
301470041152	70			

PART No	A	B	C	D
301510041152	10	8	5	M5
301512041152	12		6	
301515041152	15		7.5	
301518041152	18		9	
301520041152	20		10	
301525041152	25			
301530041152	30			
301535041152	35			
301540041152	40			
301545041152	45			
301550041152	50			
301555041152	55			
301560041152	60			
301570041152	70			

PART No	A	B	C	D
301610041152	10	10	5	M6
301615041152	15		7.5	
301618041152	18		9	
301620041152	20		10	
301625041152	25		12	
301630041152	30			
301635041152	35			
301640041152	40			
301650041152	50			
301655041152	55			
301660041152	60			
301670041152	70			

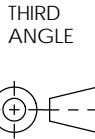
REV.	MODIFICATION.	DATE	DRN
01	PRODUCTION RELEASE	24/04/12	SF



INFORMATION CONTAINED IN THIS DOCUMENT IS CONFIDENTIAL TO RICHCO INTERNATIONAL Co. Ltd. AND MAY NOT BE DISCLOSED OR REPRODUCED IN WHOLE OR PART WITHOUT THEIR WRITTEN CONSENT.

RICHCO, INC.
WWW.RICHCO-INC.COM

ALL DIMENSIONS IN mm
GENERAL TOLERANCES ± 0.25
UNLESS OTHERWISE STATED
1 DECIMAL PLACE \pm
2 DECIMAL PLACES \pm
ANGULAR $\pm 1^\circ$



MATERIAL: MILD STEEL (RMS-232)
ZINC PLATED (RMS-236)

COLOUR:

DESCRIPTION:

HEXAGONAL METAL THREADED SPACER

PART No:

See Table

DRG No:

012-062

NPR No:

EU12-0051

SHEET SIZE A4

DRN

SF

DATE

24/04/12

CHKD

TC

DATE

24/04/12

SCALE

NTS

SHEET No.

1 OF 1