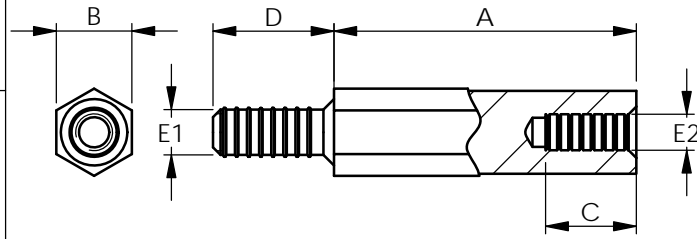
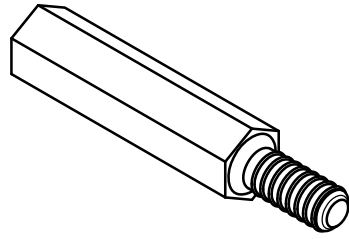


A		B			
PART No	A	B	C	D	E1 = E2
304105040050	5	4	3	6	M2
304108040050	8		4		
304110040050	10		6		
304112040050	12				
304115040050	15	5	6	M2.5	
304118040050	18				
304120040050	20				3
304125040050	25				
304130040050	30	4			
304205040050	5				
304206040050	6	6			
304207040050	7				
304208040050	8	8			
304210040050	10				
304211040050	11	8			
304212040050	12				
304215040050	15	8			
304218040050	18				
304220040050	20	8			
304225040050	25				
304230040050	30	8			

C		D			
PART No	A	B	C	D	E1=E2
304305040050	5	5	3	8	M3
304305140050		5.5			
304305240050	6	5	4	8	M3
304306040050		5.5			
304306140050	7	5	4	8	M3
304306240050		5.5			
304307040050	8	5	4	8	M3
304308040050		5.5			
304308140050	9	5	6	8	M3
304308240050		5.5			
304309040050	10	5	6	8	M3
304310040050		5.5			
304310140050	11	5	6	8	M3
304310240050		5.5			
304311040050	12	5	6	8	M3
304312040050		5.5			
304312140050	13	5	6	8	M3
304312240050		5.5			
304313040050	14	5	6	8	M3
304313140050		5.5			
304314040050	15	5	6	8	M3
304315040050		5.5			
304315140050	16	5	6	8	M3
304315240050		5.5			
304316040050	17	5	6	8	M3
304317040050		5.5			
304318040050	18	5	6	8	M3
304318140050		5.5			
304318240050	20	5	6	8	M3
304320040050		5.5			
304320140050	25	5	6	8	M3
304320240050		5.5			
304325040050	30	5	6	8	M3
304325140050		5.5			
304325240050	35	5	6	8	M3
304330040050		5.5			
304330140050	40	5	6	8	M3
304330240050		5.5			
304335040050	45	5	6	8	M3
304335140050		5.5			
304335240050	50	5	6	8	M3
304340040050		5.5			
304340140050	55	5	6	8	M3
304340240050		5.5			
304345040050	60	5	6	8	M3
304350040050		5.5			
304350140050	60	5	6	8	M3
304350240050		5.5			
304355040050	60	5	6	8	M3
304360040050		5.5			
304360140050	60	5	6	8	M3
304360140050		5.5			

E		F			
PART No	A	B	C	D	E1 = E2
304408040050	8	7	4	8	M4
304410040050	10		6		
304412040050	12		8		
304415040050	15				
304418040050	18	10	10	M4	
304420040050	20				
304425040050	25				
304430040050	30				
304435040050	35	8	8	M5	
304440040050	40				
304445040050	45				
304450040050	50				
304460040050	60	10	10	M5	
304470040050	70				
304510040050	10				
304512040050	12				
304515040050	15	8	8	M5	
304518040050	18				
304520040050	20	8	8	M5	
304525040050	25				
304530040050	30	8	8	M5	
304535040050	35				
304540040050	40	8	8	M5	
304545040050	45				
304550040050	50	8	8	M5	
304560040050	60				



INFORMATION CONTAINED IN THIS DOCUMENT IS CONFIDENTIAL TO RICHCO INTERNATIONAL Co. Ltd. AND MAY NOT BE DISCLOSED OR REPRODUCED IN WHOLE OR PART WITHOUT THEIR WRITTEN CONSENT.

RICHCO, INC. WWW.RICHCO-INC.COM	ALL DIMENSIONS IN mm GENERAL TOLERANCES ±0.25 UNLESS OTHERWISE STATED 1 DECIMAL PLACE ± 2 DECIMAL PLACES ± ANGULAR ±1°	THIRD ANGLE

MATERIAL: BRASS (RMS-260)
NICKLE PLATING (RMS-234) COLOUR:

DESCRIPTION:
HEXAGONAL BRASS THREADED SPACER PART No:
See Table

DRG No: 012-061 NPR No: EU12-0050 SHEET SIZE A4

DRN SF	DATE 20/04/12	CHKD TC	DATE 23/04/12	SCALE NTS	SHEET No. 1 OF 1
-----------	------------------	------------	------------------	--------------	---------------------

02	CO2011264	07/06/12	SF
01	PRODUCTION RELEASE	23/04/12	SF
REV.	MODIFICATION.	DATE	DRN