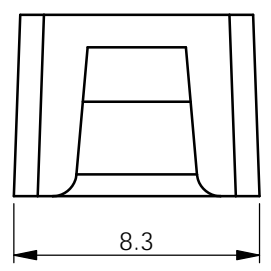
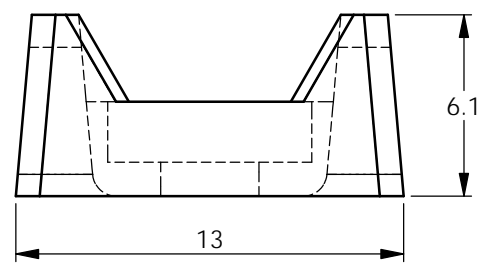
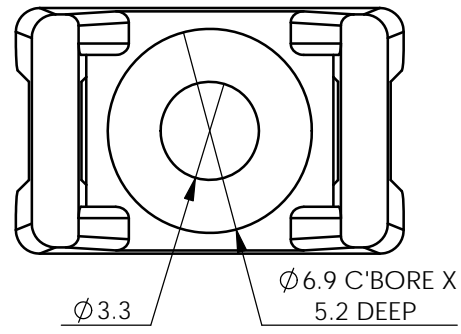


REV.	MODIFICATION.	DATE	DRN
01	CO2011083	21/02/11	SF

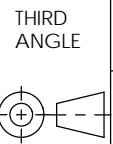


MOUNTING RIVETS FOR FTH-28RS		
RIVET No.	HOLE ϕ	PANEL THICKNESS
SR-3035	3.1 - 3.2	UP TO 0.9
SR-3045		0.9 - 1.9
SR-3055		1.9 - 2.9
SR-3065		2.9 - 3.9
SR-3075		3.9 - 4.9
SR-3080		4.4 - 5.4
SR-3090		5.4 - 6.4
SR-3100		6.4 - 7.4

INFORMATION CONTAINED IN THIS DOCUMENT IS CONFIDENTIAL TO RICHCO INTERNATIONAL Co. Ltd. AND MAY NOT BE DISCLOSED OR REPRODUCED IN WHOLE OR PART WITHOUT THEIR WRITTEN CONSENT.

RICHCO, INC.
WWW.RICHCO-INC.COM

ALL DIMENSIONS IN mm
GENERAL TOLERANCES ± 0.25
UNLESS OTHERWISE STATED
1 DECIMAL PLACE \pm
2 DECIMAL PLACES \pm
ANGULAR $\pm 1^\circ$



MATERIAL: See table COLOUR: See table

DESCRIPTION: FLAT TIE HOLDER PART No: See Table

DRG No: 011-030 NPR No: XXXX-XXX SHEET SIZE A4

DRN SF	DATE 21/02/11	CHKD JK	DATE 21/02/11	SCALE NTS	SHEET No. 1 OF 1
-----------	------------------	------------	------------------	--------------	---------------------

MATERIAL: UL94 V-2 NYLON 6/6, RMS-01* COLOUR: NATURAL		
PART No.	CABLE TIE ACCEPTED	MOUNTING SCREW RIVET
FTH-28RS-01	ALL RG CABLE TIES UP TO SIZE RG-210/310	M3 SCREW OR RIVET(SEE TABLE)
*AVAILABLE IN UL94 V-0 BY SPECIAL ORDER. TO ORDER REPLACE -01 WITH -19.		